

Kingaroy, 40 Frangipani Drive

Neat and Tidy, Brick and Tile

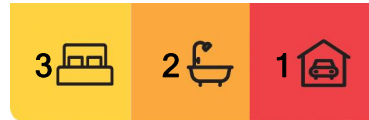
This brick and tile construction has 3 generous built in bedrooms, all with ceiling fans. Open plan kitchen-dining area is air conditioned and a separate air conditioned lounge room is air conditioned. Plenty of kitchen storage, a dishwasher, electric appliances and overlooks the backyard and out to the view. Good sized family bathroom and ensuite off the main as expected in a modern home like this. Integrated garaging which includes the laundry and built in storage, and a secure privacy fenced backyard complete the family style amenities of this home.

North facing patio overlooks surrounding farmland and admires the manicured backyard. Back to grid solar will help keep living expenses to a minimum, large garden shed for storage and a rain water tank.

This is an attractive low maintenance proposition for yourself or as a desirable investment with potential of up to \$525 per week rental return..



Disclaimer: All information contained therein is gathered from relevant third parties sources. We cannot guarantee or give any warranty about the information provided. Interested parties must rely solely on their own enquiries.



For Sale
Please Call

View
ljhooker.com.au/7QVZH6K

Contact
Kim Burton
0419 733 066
sales@ljhkingaroy.com.au

LJ Hooker South Burnett
(07) 4162 1620

More About this Property

Property ID	7QVZH6K
Property Type	House
Land Area	900 m ²
Including	Air Conditioning Toilets (2) Built-in-Robes Fully Fenced Water Tank

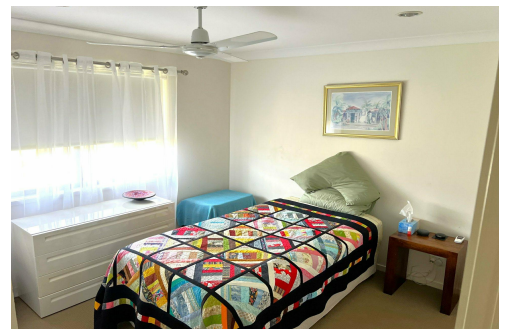
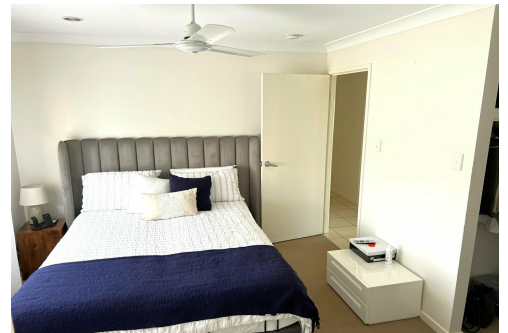
Kim Burton 0419 733 066

Sales Agent | sales@ljhkingaroy.com.au

LJ Hooker South Burnett (07) 4162 1620

196 Haly Street, KINGAROY QLD 4610

kingaroy.ljhooker.com.au | kingaroy@ljhkingaroy.com.au



**LJ Hooker South Burnett
(07) 4162 1620**

Disclaimer: All information contained therein is gathered from relevant third parties sources. We cannot guarantee or give any warranty about the information provided. Interested parties must rely solely on their own enquiries.