



36 Webster Street, Kingaroy

Hillside Entry Level

Positioned high on the hill in a well-established area, this charming home captures sweeping views to the iconic Bunya Mountains from its classic Queenslander-style facade and wide veranda's.

Offering plenty of character and potential, the property presents an excellent opportunity for buyers looking to add their own finishing touches while enjoying many of the major improvements already completed. Two brand new bathrooms and new floor coverings have already been completed, taking care of much of the hard work.

Inside, the home features three bedrooms, including a main bedroom with ensuite, along with a central air-conditioned open plan living and dining area. The functional kitchen offers space for casual eat-in dining or the opportunity to further expand and modernise to suit your style.

Conveniently located only five minutes from the Kingaroy CBD and close to St Mary's School, this is a quality entry-level property with solid foundations, recent renovations and exciting potential to finish and make your own.

3  2  1 

FOR SALE
\$530,000

VIEW
By Appointment

AGENTS
Kim Burton
0419 733 066
sales@ljhkingaroy.com.au

AGENCY
LJ Hooker South Burnett
(07) 4162 1620

All information contained therein is gathered from relevant third parties sources.
We cannot guarantee or give any warranty about the information provided.
Interested parties must rely solely on their own enquiries.

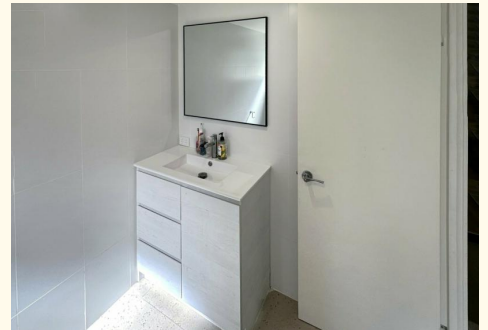
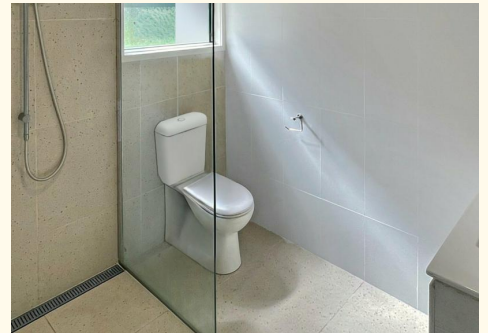
 **LJ Hooker**

MORE DETAILS

Property ID 7RBJH6K
Property Type House
Land Area 1009 m2
Including Air Conditioning
Toilets (2)
Built-in-Robes
Fully Fenced

Kim Burton 0419 733 066
Sales Agent | sales@ljhkingaroy.com.au

LJ Hooker South Burnett (07) 4162 1620
196 Haly Street, KINGAROY QLD 4610
kingaroy.ljhooker.com.au | kingaroy@ljhkingaroy.com.au



All information contained therein is gathered from relevant third parties sources.
We cannot guarantee or give any warranty about the information provided.
Interested parties must rely solely on their own enquiries.