

Kilmore, 6 James Close

Simply the Best: A Luxurious Custom-Built Home with Exceptional Craftsmanship

Welcome to a home that redefines luxury and sophistication, nestled on a generous 737m² block and perfectly positioned within walking distance to schools and supermarkets. This 4-bedroom masterpiece is a showcase of meticulous craftsmanship and thoughtful design, offering a lifestyle of unparalleled comfort and elegance. As you step inside, you'll be greeted by the polished solid timber floorboards that extend throughout the home, exuding a timeless charm. The entry area leads you down to a stunning split-level kitchen, family, and meals area where high 3.4-metre ceilings create an expansive and airy atmosphere. The kitchen is a chef's dream, featuring sleek stone benchtops, exquisite handmade marble tiles, and extensive overhead cabinetry. A well-appointed butler's pantry, complete with a sink and ample storage, makes entertaining a delight.

The master suite is a sanctuary of luxury, boasting a full ensuite with a freestanding bath, double vanity and shower, and a spacious walk-in robe. The second bedroom also



For Sale
Please Call

View
ljhooker.com.au/7KEHJS

Contact
Gavin Henderson
0408 359 764
ghenderson.broadford@ljhooker.com.au



LJ Hooker Broadford | Kilmore
(03) 5784 2558

Disclaimer: All information contained therein is gathered from relevant third parties sources. We cannot guarantee or give any warranty about the information provided. Interested parties must rely solely on their own enquiries.

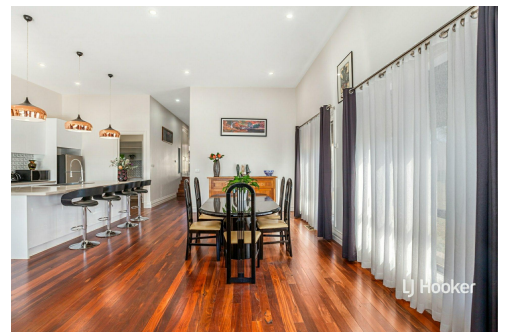
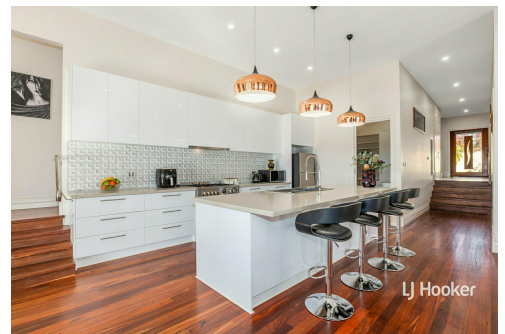
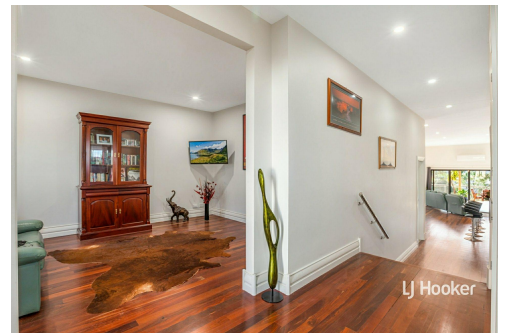
impresses with its own ensuite and built-in robes, providing a private retreat for guests or family members. The third and fourth bedrooms are equally well-appointed, each with built-in robes to meet all your storage needs. The main bathroom is a statement of style, featuring a clawfoot bath and a double vanity, ensuring a touch of opulence in your daily routine. For those who work from home, a dedicated study area provides a peaceful and efficient workspace.

Living spaces are abundant in this home. A separate rumpus room offers a cosy area for relaxation, while the formal lounge, with its inviting ambiance, is perfect for entertaining guests. From the family area, step outside to the covered alfresco dining space, ideal for family BBQs or a quiet evening drink, blending indoor and outdoor living seamlessly.

Practical features abound, including a double garage with internal access, a concrete driveway, and side access perfect for parking a caravan, trailer, or additional vehicles. Comfort is guaranteed with zoned gas ducted heating and a split-system reverse cycle air conditioning unit in the main living area, keeping the home comfortable throughout the seasons.

Energy efficiency is a highlight, with a 6kW solar system comprising 16 panels, and roller shutters on the east and west-facing windows, reducing energy costs and enhancing security. For those with hobbies or a need for extra storage, the under-house workshop is a fantastic feature, complete with a toilet and a separate lock-up area, ideal for tradespeople or those requiring additional space.

Set in a picturesque location, this home is not just a residence, but a statement of luxury and practical living. Every detail has been considered to offer a lifestyle that is simply the best. With nothing left to do but move in, this is your chance to own a home that combines quality, elegance, and convenience in one perfect package. Contact us today to arrange a viewing and experience the pinnacle of refined living. For more information, please contact Gavin Henderson on 0408 359 764.



More About this Property

Property ID	7KEHJS
Property Type	House
Land Area	737 m ²
Including	Toilets (4)

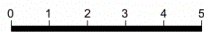
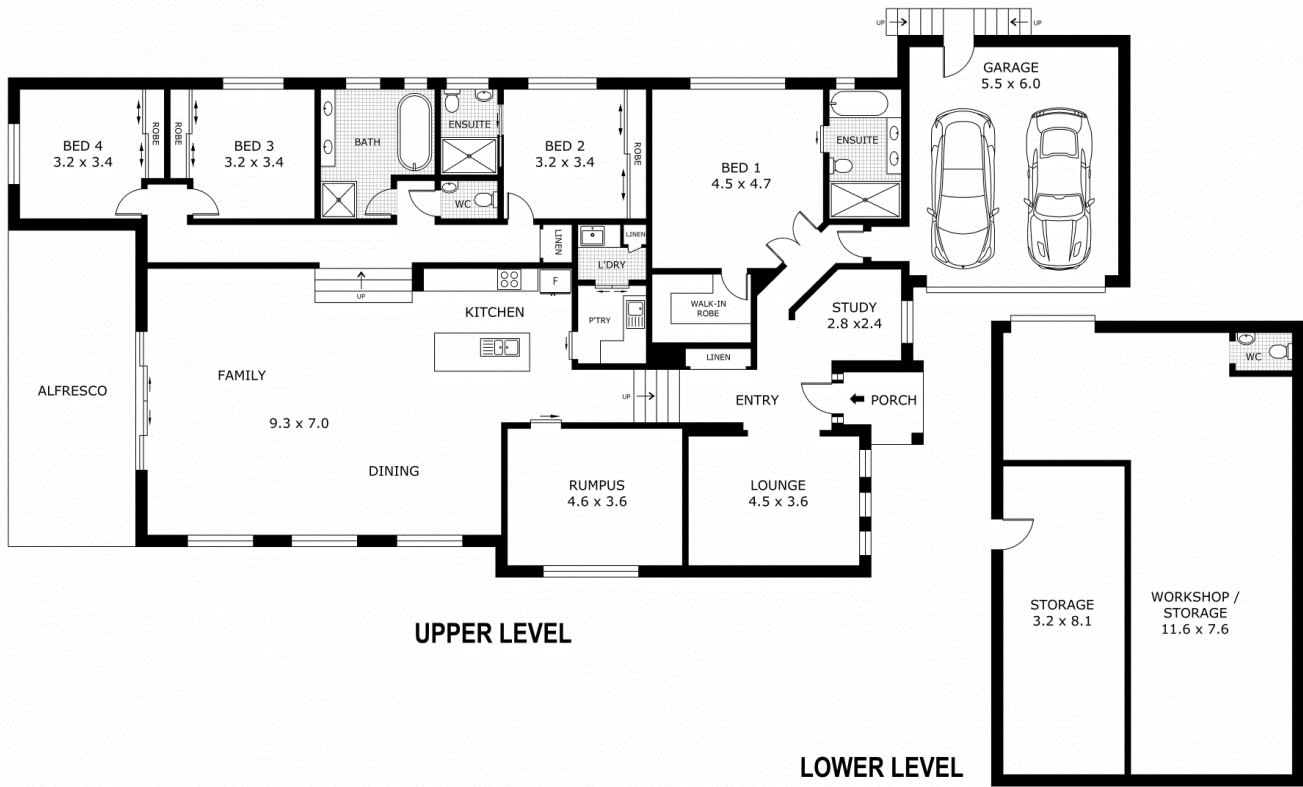
Gavin Henderson 0408 359 764
Principal | ghenderson.broadford@ljhooker.com.au

LJ Hooker Broadford | Kilmore (03) 5784 2558
1629 Broadford Wandong Road, BROADFORD VIC 3658
broadford.ljhooker.com.au | broadford@ljhooker.com.au



Disclaimer: All information contained therein is gathered from relevant third parties sources. We cannot guarantee or give any warranty about the information provided. Interested parties must rely solely on their own enquiries.

LJ Hooker Broadford | Kilmore
(03) 5784 2558



Scale in metres. Indicative only. Dimensions are approximate. All information contained herein is gathered from sources we believe to be reliable. However we cannot guarantee its accuracy and interested parties should rely on their own enquiries.

Residence	- 238.0 m ²
Workshop/Storage	- 88.1 m ²
Garage	- 34.0 m ²
Alfresco	- 27.0 m ²
Porch	- 4.0 m ²
Total	- 391.1 m²



6 James Close, Kilmore



LJ Hooker Broadford | Kilmore
(03) 5784 2558

Disclaimer: All information contained therein is gathered from relevant third parties sources. We cannot guarantee or give any warranty about the information provided. Interested parties must rely solely on their own enquiries.