



26 Mikada Boulevard, Kilmore


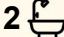

Family Flair in a Prime Location

Step into comfortable and convenient living with this spacious four-bedroom family home situated on a 576 sqm block, perfectly designed to suit growing families and tradies alike. The master bedroom features a full ensuite and walk-in robe, while the remaining bedrooms feature built-in robes, offering ample space for the whole family.

The heart of the home is the generous tiled kitchen and dining area, complete with a walk-in pantry, island bench, and plenty of cupboard space. This space opens seamlessly to a large undercover paved alfresco area, perfect for year-round entertaining. Enjoy the comfort of ducted gas heating throughout, complemented by a split system reverse cycle unit in the family area, and relax in the separate lounge for added living flexibility.

Outside, you'll find established gardens, a fully fenced back yard, garden shed, and a concrete driveway. A double garage with internal access and double gate side access to the backyard provides ideal accommodation for a truck, trailer, caravan, or boat.

Located just a short walk to primary schools, Assumption College, and with a local bus stop nearby, this home blends lifestyle, location, and functionality: ideal for the modern family. Please contact Gavin Henderson on 0408 359 764 if you have any queries.

4  2  2 

FOR SALE

Please Call

AGENTS

Gavin Henderson

0408 359 764

ghenderson.broadford@ljhooker.com.au

Sally Long

0477 437 281

sally.long@ljhooker.com.au

AGENCY

LJ Hooker Broadford | Kilmore

(03) 5784 2558

All information contained therein is gathered from relevant third parties sources. We cannot guarantee or give any warranty about the information provided. Interested parties must rely solely on their own enquiries.

 **LJ Hooker**

MORE DETAILS

Property ID 7RYHJS
Property Type House
Land Area 576 m2
Including Toilets (2)

Gavin Henderson 0408 359 764

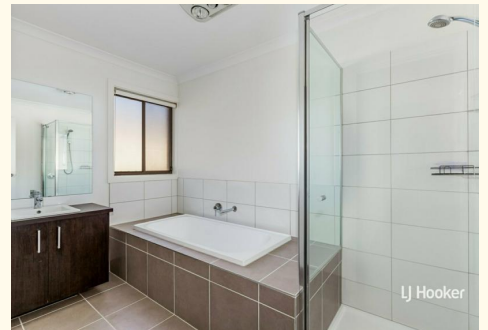
Principal | ghenderson.broadford@ljhooker.com.au

Sally Long 0477 437 281

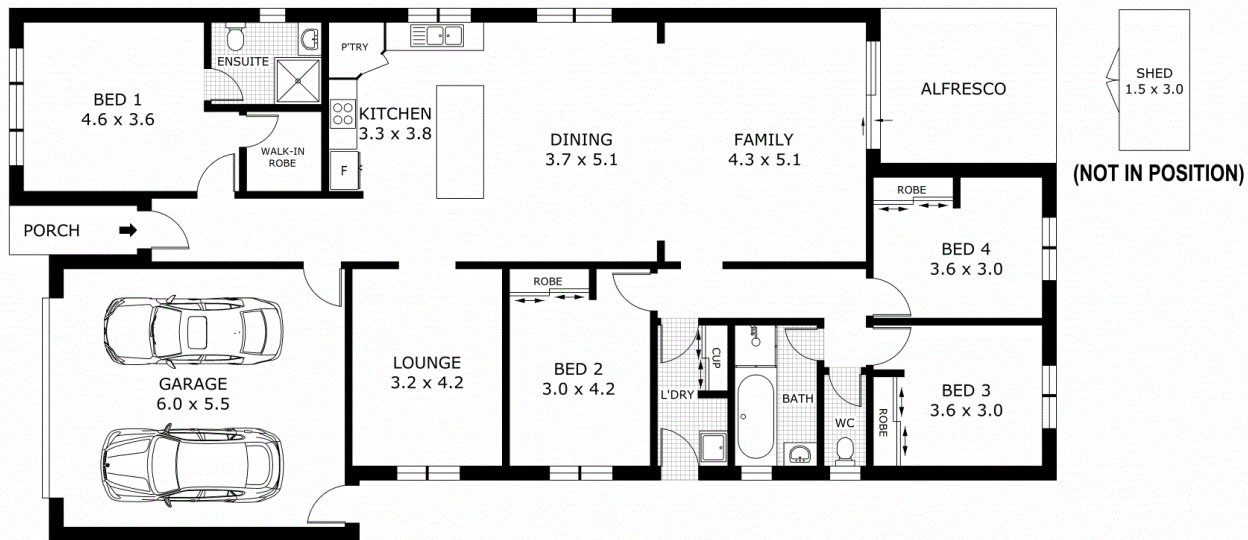
Licensed Real Estate Agent | sally.long@ljhooker.com.au

LJ Hooker Broadford | Kilmore (03) 5784 2558

1629 Broadford Wandong Road, BROADFORD VIC 3658
broadford.ljhooker.com.au | broadford@ljhooker.com.au



All information contained therein is gathered from relevant third parties sources.
We cannot guarantee or give any warranty about the information provided.
Interested parties must rely solely on their own enquiries.



Scale in metres. Indicative only. Dimensions are approximate. All information contained herein is gathered from sources we believe to be reliable. However we cannot guarantee its accuracy and interested parties should rely on their own enquiries.

Residence	- 159.4m ²
Porch	- 2.9m ²
Alfresco	- 12.3m ²
Garage	- 33.0m ²
Shed	- 4.5m ²
Total	- 212.1m ²



26 Mikada Boulevard, Kilmore

