

Kilmore, 225 Kilmore-Lancefield Road

Large family home on 18.4 acres

This exceptional 3-bedroom home is a prime example of mid-century American architecture, custom-built to accommodate a growing family. The master bedroom features a semi-ensuite, while the other bedrooms are equipped with built-in robes. Clerestory windows run the length of the home, filling it with bright, natural light. Ample room exists to modify the current floorplan if more bedrooms are required.

The spacious rumpus room, complete with a cosy wood heater, offers a perfect space to relax. The formal dining area is warmed by an LPG gas wall heater, and the separate lounge features exposed beams and another wood heater, adding to the home's charm. The large kitchen overlooks the wonderful gardens, and the family room provides access to an undercover alfresco and pergola area, ideal for entertaining. The property offers ample parking with undercover space for 10 cars, plus additional sundry shedding. A highlight of this property is the large lagoon with a pier, providing dam water for the gardens. The gardens themselves are a sight to behold, resembling an extensive arboretum of both rare and significant trees, complemented by a native habitat of local

3

2

10

For Sale
Please Call

View
ljhooker.com.au/7K4HJS

Contact
Gavin Henderson
0408 359 764
ghenderson.broadford@ljhooker.com.au



Disclaimer: All information contained therein is gathered from relevant third parties sources. We cannot guarantee or give any warranty about the information provided. Interested parties must rely solely on their own enquiries.

LJ Hooker Broadford | Kilmore
(03) 5784 2558

trees and expanses of indigenous grasses. Numerous water birds and native animals call this serene environment home. The home has sealed road frontage and has 18,000 gallons (70,000 litres) approx. of drinking water.

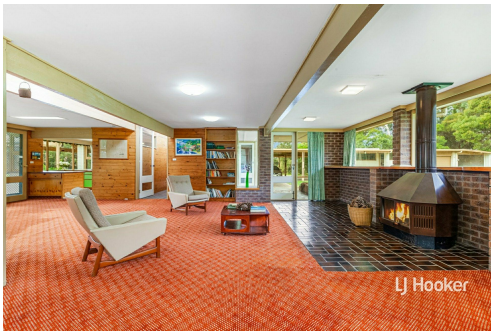
Situated on the edge of Kilmore township, this 18.38-acre property also presents a unique opportunity for the astute land banker looking to invest in Kilmore's future. The combination of natural beauty, architectural charm, and strategic location makes this a truly unique offering. For more information or to arrange a private inspection, please contact Gavin Henderson on 0408 359 764.

More About this Property

Property ID	7K4HJS
Property Type	House
Land Area	18.38 acre
Including	Toilets (2) Outdoor Entertaining

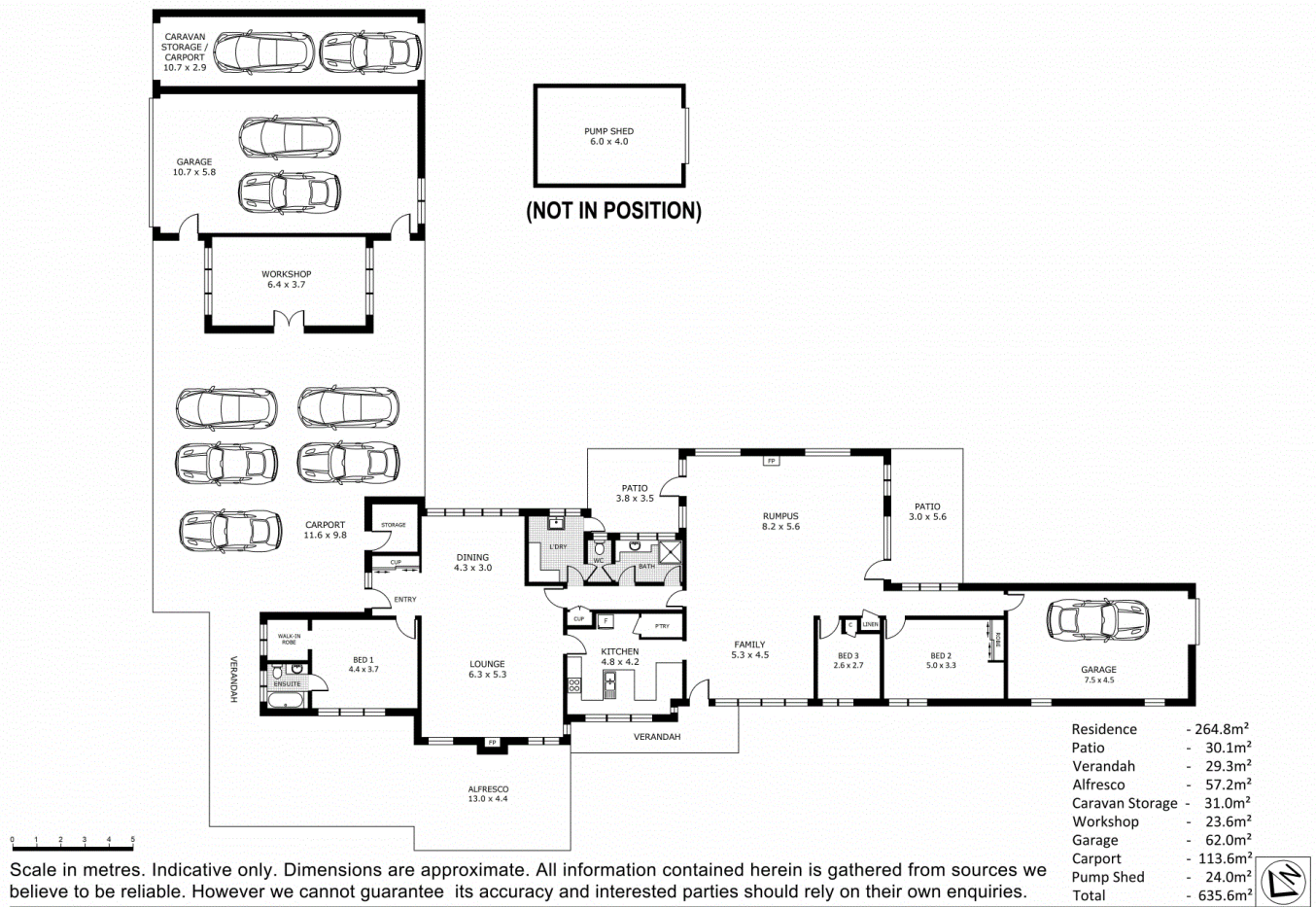
Gavin Henderson 0408 359 764
Principal | ghenderson.broadford@ljhooker.com.au

LJ Hooker Broadford | Kilmore (03) 5784 2558
1629 Broadford Wandong Road, BROADFORD VIC 3658
broadford.ljhooker.com.au | broadford@ljhooker.com.au



Disclaimer: All information contained therein is gathered from relevant third parties sources. We cannot guarantee or give any warranty about the information provided. Interested parties must rely solely on their own enquiries.

LJ Hooker Broadford | Kilmore
(03) 5784 2558



225 Kilmore-Lancefield Road, Kilmore

