

Kilmore, 2 James Close

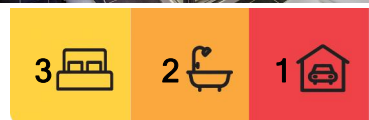
Neat and Tidy Townhouse

This well-presented 3-bedroom townhouse is the perfect opportunity for retirees, first home buyers, or savvy investors. Set on a low-maintenance 347 sqm corner block, it offers practicality, comfort, and convenience in a neat and tidy package.

The master bedroom features a walk-in robe, ensuite, and floating timber-look flooring, while bedrooms 2 and 3 are carpeted and include built-in robes. The open-plan kitchen and meals area is serviced by a split system for year-round comfort and is fitted with gas hotplates, an electric oven, and plenty of storage space.

The single garage includes internal access, making coming and going easy, and rear access gates provide additional versatility to the fully fenced back yard. Outside, you'll enjoy the low-maintenance gardens and a concrete driveway that enhances the home's overall functionality.

This property is perfectly suited to those seeking a hassle-free lifestyle, with all the features you need to settle in comfortably or secure as a sound investment. Don't miss out on this fantastic opportunity! Please contact Gavin Henderson on 0408 359 764 for all enquiries.



For Sale
Please Call

View
ljhooker.com.au/7NGHJS

Contact
Gavin Henderson
0408 359 764
ghenderson.broadford@ljhooker.com.au
Sally Long
0477 437 281
sally.long@ljhooker.com.au



Disclaimer: All information contained therein is gathered from relevant third parties sources. We cannot guarantee or give any warranty about the information provided. Interested parties must rely solely on their own enquiries.

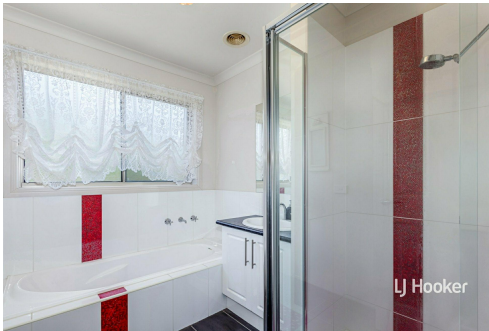
LJ Hooker Broadford | Kilmore
(03) 5784 2558

More About this Property

Property ID	7NGHJS
Property Type	House
Land Area	347 m2
Including	Toilets (2)

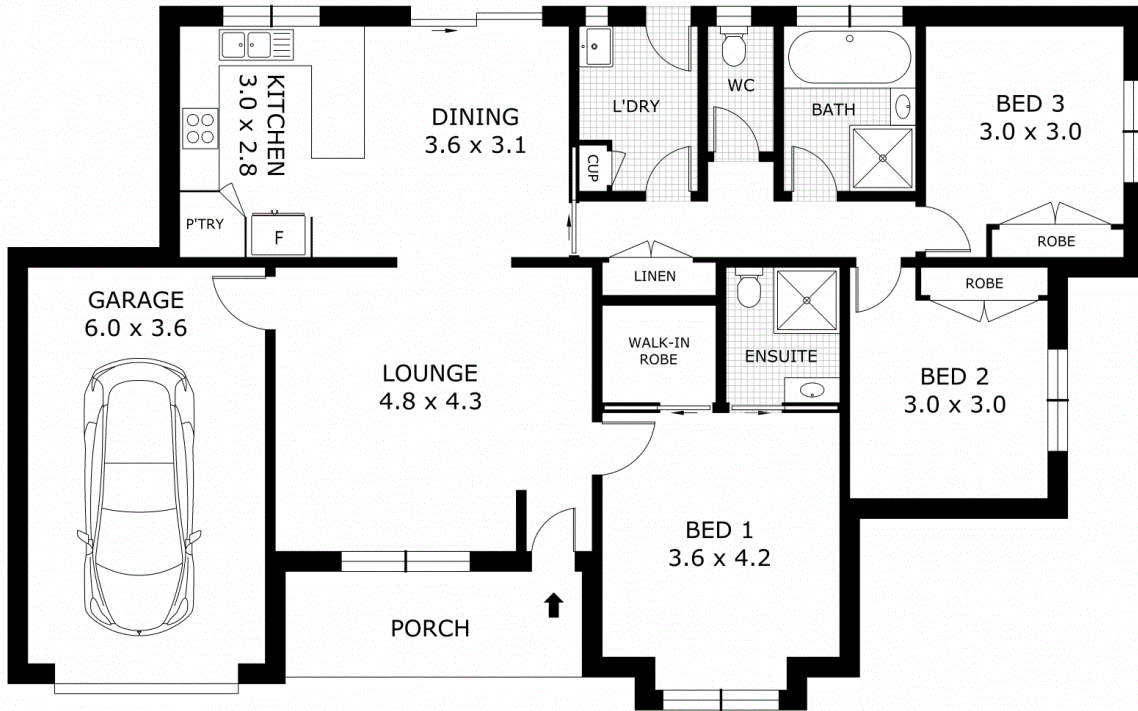
Gavin Henderson 0408 359 764
Principal | ghenderson.broadford@ljhooker.com.au
Sally Long 0477 437 281
Licensed Real Estate Agent | sally.long@ljhooker.com.au

LJ Hooker Broadford | Kilmore (03) 5784 2558
1629 Broadford Wandong Road, BROADFORD VIC 3658
broadford.ljhooker.com.au | broadford@ljhooker.com.au



Disclaimer: All information contained therein is gathered from relevant third parties sources. We cannot guarantee or give any warranty about the information provided. Interested parties must rely solely on their own enquiries.

LJ Hooker Broadford | Kilmore
(03) 5784 2558



Scale in metres. Indicative only. Dimensions are approximate. All information contained herein is gathered from sources we believe to be reliable. However we cannot guarantee its accuracy and interested parties should rely on their own enquiries.

Residence	- 106.3 m ²
Porch	- 7.2 m ²
Garage	- 21.6 m ²
Total	- 135.1 m ²



2 James Close, Kilmore



LJ Hooker Broadford | Kilmore
(03) 5784 2558

Disclaimer: All information contained therein is gathered from relevant third parties sources. We cannot guarantee or give any warranty about the information provided. Interested parties must rely solely on their own enquiries.