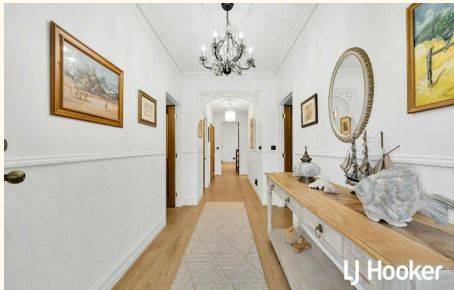




Sold



13 Echidna Court, Kilmore

## Echinda Cottage: Grace and Grandeur

Gracefully positioned in a peaceful court location, Echinda Cottage offers timeless Victorian-inspired elegance blended seamlessly with modern functionality. This beautifully appointed single-level residence sits on an elevated 654 sqm (approx.) block in one of Kilmore's most desirable neighbourhoods, within easy reach of shops, parklands, and medical facilities.

From the moment you arrive, the home's striking bluestone brick facade and charming leadlight entry set the tone for the quality and character found throughout. Inside, soaring ceilings, ornate cornices, ceiling roses, and pressed metal wall panels reflect the craftsmanship and detail of a bygone era, creating an inviting sense of grandeur. Designed for relaxed living and entertaining, the open plan lounge, dining and kitchen areas are generous in scale and filled with natural light. The home has recently added stunning oak floating floorboards throughout. The gourmet kitchen is styled in a provincial theme and features stone benchtops, an induction cooktop, and a breakfast bar that serves as a beautiful centrepiece for family life and gatherings. All three bedrooms are well-proportioned, with the master enjoying a walk-in robe and private ensuite. The bathrooms are a true standout, featuring clawfoot baths, black-and-white tiled floors, and marble vanities - evoking a sense of indulgence and charm.

3 2 4

**FOR SALE**  
Please Call

### AGENTS

Sally Long  
0477 437 281  
sally.long@ljhooker.com.au

Gavin Henderson  
0408 359 764  
ghenderson.broadford@ljhooker.com.au

### AGENCY

LJ Hooker Broadford | Kilmore  
(03) 5784 2558

All information contained therein is gathered from relevant third parties sources.  
We cannot guarantee or give any warranty about the information provided.  
Interested parties must rely solely on their own enquiries.



Comfort is assured all year round with double-glazed windows, zoned ducted heating, refrigerated cooling, and ceiling fans. Outside, a covered alfresco area is ideal for entertaining or simply unwinding in the fresh air, while the manicured garden adds a lovely touch of greenery with stunning Sir Walter Buffalo turf to complete the rear yard. Additional features include a double enclosed carport, and 8x6m (approx.) powered shed with a concrete floor - ideal as a workshop or storage.

Every detail of this residence has been thoughtfully designed to create a low-maintenance, high-comfort lifestyle. Whether you're looking to downsize without compromise or appreciate the finer things in life, this is a home that truly delivers on space, style and sophistication. For more information or to arrange a private inspection, please contact Sally Long on 0477 437 281. You won't want to miss this exceptional opportunity to secure a home of timeless quality in the heart of Kilmore.

## MORE DETAILS

Property ID	7RWHJS
Property Type	House
Land Area	654 m2
Including	Toilets (2)

### Sally Long 0477 437 281

Licensed Real Estate Agent | [sally.long@ljhooker.com.au](mailto:sally.long@ljhooker.com.au)

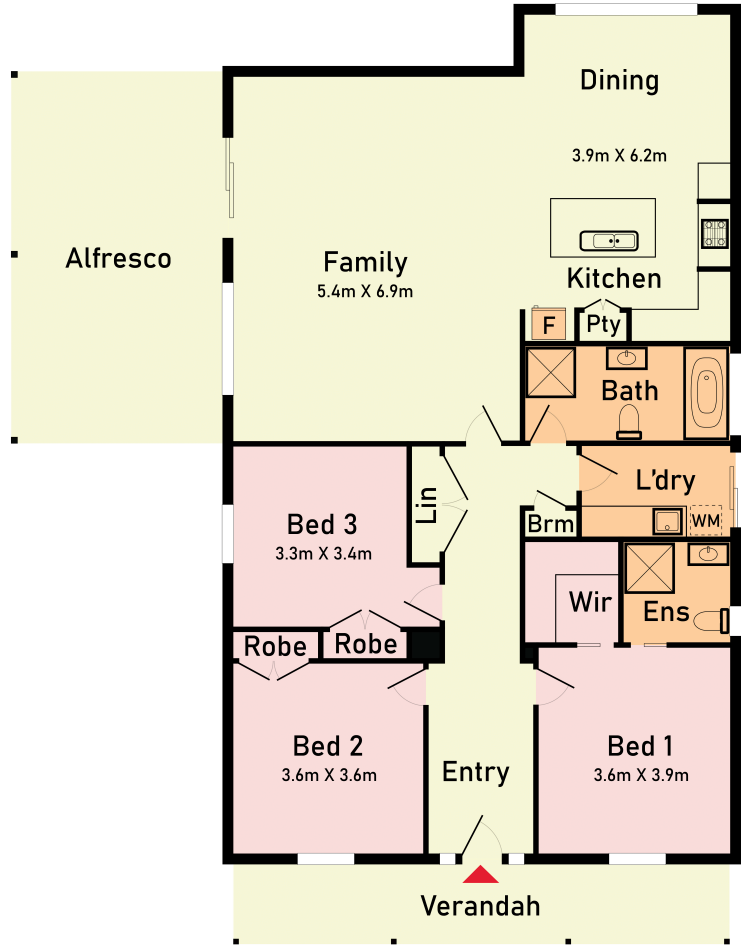
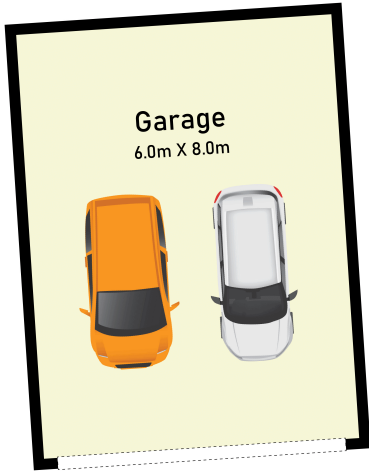
### Gavin Henderson 0408 359 764

Principal | [gghenderson.broadford@ljhooker.com.au](mailto:gghenderson.broadford@ljhooker.com.au)

### LJ Hooker Broadford | Kilmore (03) 5784 2558

1629 Broadford Wandong Road, BROADFORD VIC 3658  
[broadford.ljhooker.com.au](http://broadford.ljhooker.com.au) | [broadford@ljhooker.com.au](mailto:broadford@ljhooker.com.au)





## 13 Echidna Court, Kilmore

\* Dimensions are approximate and for illustrative purposes only



**LJ Hooker**