



3/4-6 Norton Avenue, Killarney Vale

## Relaxed, Low-Maintenance Lakeside Living —Over 55s Strata Villa

Enjoy the ultimate in easy-care, coastal living with this spacious two-bedroom villa, ideally positioned in a quiet and well-kept complex of just six homes in the heart of lakeside Killarney Vale. Perfect for downsizers, retirees, or those seeking a secure lifestyle without compromise, this property offers the perfect blend of comfort, convenience, and community.

Set just a short stroll from the stunning Tuggerah Lake foreshore and scenic waterfront walkway, you'll love starting your mornings with a peaceful lakeside stroll or enjoying the natural beauty just moments from your door.

With the local Urgent Care Centre located directly across the road and Bateau Bay Square just minutes away for all your shopping, medical, and dining needs, everything you need is right at your fingertips.

Property Highlights:

2 🛏 1 🚿 1 🚗

**FOR SALE**  
\$690,000 - \$750,000

### AGENTS

Craig Trehearne  
0478 072 257  
craig.trehearne@ljhooker.com.au

### AGENCY

LJ Hooker Tumbi Umbi | Killarney Vale |  
Bateau Bay  
(02) 4389 1722

All information contained therein is gathered from relevant third parties sources.  
We cannot guarantee or give any warranty about the information provided.  
Interested parties must rely solely on their own enquiries.

 **LJ Hooker**

Bright and airy open-plan living and dining space

Modern, well-appointed kitchen

Two generous bedrooms with built-in wardrobes

Neat, accessible bathroom designed for comfort

Internal laundry

Single lock-up garage with internal access

Private, low-maintenance courtyard —perfect for morning tea or a bit of gardening

Small, friendly over 55s community in a peaceful, leafy setting

Strata fees approx. \$1,000 per quarter

Whether you're looking to slow down or simply simplify, this villa offers the lifestyle you've been searching for —in a location you'll love.

Contact us today to arrange your private inspection

**Disclaimer:** All information contained herein is gathered from sources we consider to be reliable, however we cannot guarantee or give any warranty about the information provided. All images, border/s, property boundaries and floor plans are indicative of the property and for illustrative purposes only. Any development potential stated herein is suggestive only and may be subject to relevant approvals, as such it is not to be relied upon. All distances and measurements are approximate. Interested parties must solely rely on their own enquiries.

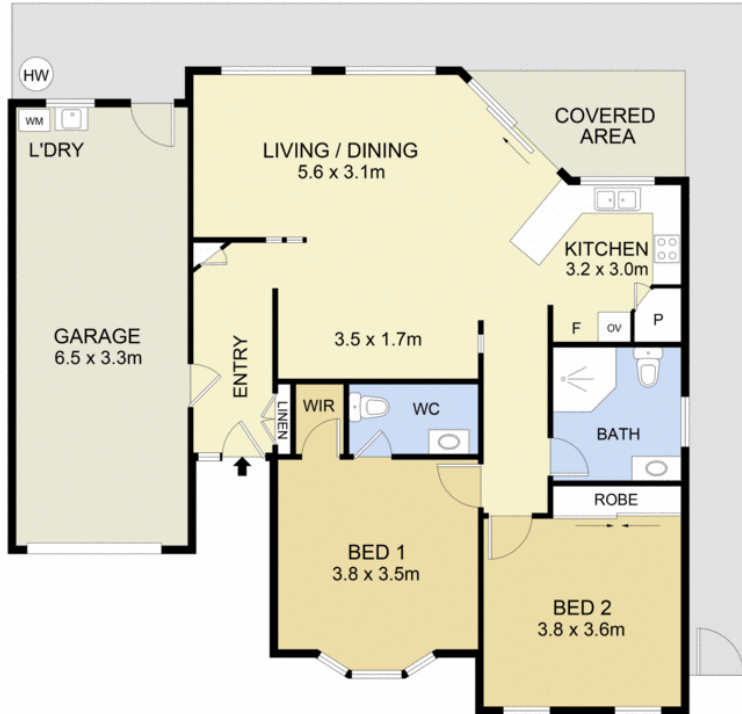
## MORE DETAILS

Property ID                      WR5GJF  
Property Type                  Villa

**Craig Trehearne 0478 072 257**  
Sales Consultant L.R.E.A | [craig.trehearne@ljhooker.com.au](mailto:craig.trehearne@ljhooker.com.au)

**LJ Hooker Tumbi Umbi | Killarney Vale | Bateau Bay (02) 4389 1722**  
Shop 2, 140 Wyong Road, KILLARNEY VALE NSW 2261  
[tumbiumbi.ljhooker.com.au](http://tumbiumbi.ljhooker.com.au) | [tumbiumbi@ljhooker.com.au](mailto:tumbiumbi@ljhooker.com.au)





3/4-6 Norton Avenue, Killarney Vale