

Killarney Vale, 63 George Evans Road

Original Killarney Vale Home!

Set in a quality street and offering scope to improve.

Capturing a commanding street presence.

Ready for you to add your own finishes through renovation and make the most of the existing three-bedroom ensuite layout.

Be quick to inspect 63 George Evans Road, Killarney Vale.

- * Living area with vaulted ceilings.
- * Kitchen and adjoining dining area.
- * Three bedrooms, with large built-in robe and ensuite to main.
- * Built in robe to bedroom two.
- * Bathroom with separate bath and shower.



For Sale
Contact Agent

View
By Appointment

Contact
Justin Bond
0406 999 007
justin.bond@ljhooker.com.au
Belinda Bond
0400 544 557
belinda.bond@ljhooker.com.au



Disclaimer: All information contained therein is gathered from relevant third parties sources. We cannot guarantee or give any warranty about the information provided. Interested parties must rely solely on their own enquiries.

LJ Hooker Tumbi Umbi | Killarney Vale | Bateau Bay
(02) 4389 1722

- * Internal laundry.
- * Under cover outdoor area.
- * Rear garage.
- * Storage shed.
- * Sunny rear yard.

The Location:

Approximately

- * 1 km to Killarney Vale Public School.
- * 900 m to Coles Killarney Vale and Village Shops.
- * 2.8 kms to Tuggerah Lakes Secondary College.
- * 3.3 kms to Shelly Beach Golf Course.
- * 1.8 kms to Bay Village Square.
- * 10 kms to Tuggerah Station, Westfield Tuggerah and M1 Motor way.

A must to inspect!

If you have any further questions please contact Justin or Belinda Bond.

Disclaimer: All information contained herein is gathered from sources we consider to be reliable, however we cannot guarantee or give any warranty about the information provided. All images, border/s, property boundaries and floor plans are indicative of the property and for illustrative purposes only. Any development potential stated herein is suggestive only and may be subject to relevant approvals, as such it is not to be relied upon. All distances and measurements are approximate. Interested parties must solely rely on their own enquiries.

More About this Property

Property ID	WQ8GJF
Property Type	House
Land Area	556.4 m2
Including	Ensuite

Justin Bond 0406 999 007

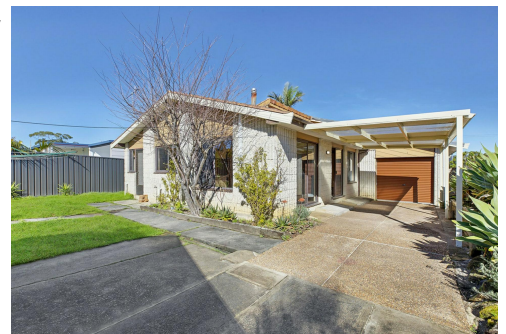
Principal - Licensee | justin.bond@ljhooker.com.au

Belinda Bond 0400 544 557

Principal - Licensee | belinda.bond@ljhooker.com.au

LJ Hooker Tumby Umbi | Killarney Vale | Bateau Bay (02) 4389 1722

Shop 2, 140 Wyong Road, KILLARNEY VALE NSW 2261
tumbiumbi.ljhooker.com.au | tumbiumbi@ljhooker.com.au



Disclaimer: All information contained therein is gathered from relevant third parties sources. We cannot guarantee or give any warranty about the information provided. Interested parties must rely solely on their own enquiries.

LJ Hooker Tumby Umbi | Killarney Vale | Bateau Bay (02) 4389 1722



Scale in metres. Indicative only. Dimensions are approximate. All information contained herein is gathered from sources we believe to be reliable. However we cannot guarantee its accuracy and interested persons should rely on their own enquiries

INT : 150m²
EXT : 24m² NOT TO SCALE

63 George Evans Road, Killarney Vale