

Killarney Vale, 50 Playford Road

Charming and Quaint 3 Bedroom Home on a Generous Block!

Step into this delightful 3 bedroom home, nestled on a generous block in a peaceful and friendly neighborhood.

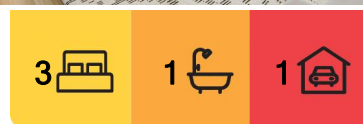
Full of character and warmth, this quaint cottage offers an ideal space for comfortable living, with a generous rear yard that could be the ideal place for an oversized garage, pool, granny flat or may lend itself to development (Subject to council approval)

Key Features:

- Cozy living spaces with beautiful hard wood floors and abundant natural light.
- Charming kitchen with stainless steel appliances, and timber cabinetry.
- Three bedrooms.
- Renovated bathroom.



Disclaimer: All information contained therein is gathered from relevant third parties sources. We cannot guarantee or give any warranty about the information provided. Interested parties must rely solely on their own enquiries.



For Sale
Please Call

View
ljhookeer.com.au/WHEGJF

Contact
Justin Bond
0406 999 007
justin.bond@ljhookeer.com.au
Belinda Bond
0400 544 557
belinda.bond@ljhookeer.com.au

LJ Hooker Tumby Umbi | Killarney Vale | Bateau Bay
(02) 4389 1722

- Large rear yard — perfect for outdoor activities. gardening, or future expansions (Subject to council approval)
 - Side access and plenty of off-street parking.
 - Family-friendly neighborhood near excellent schools, parks, and local amenities.
- This home provides the perfect blend of cozy living and ample space to add value.

Do not miss out—schedule your private inspection today and explore the potential of this charming property!

The Location:

- 1.3 kms to Killarney Vale Public School.
- 2.4 kms to Tuggerah Lakes Secondary College.
- 1.2 kms to Coles Killarney Vale.
- 1 km to Tuggerah Lake and Cycleway.
- 2.2 kms to Bay Village Square
- 3.7 kms to Shelly Beach Golf Course.
- Approximately 10 kms to Tuggerah Station, Westfield Tuggerah and M1 Motor way.

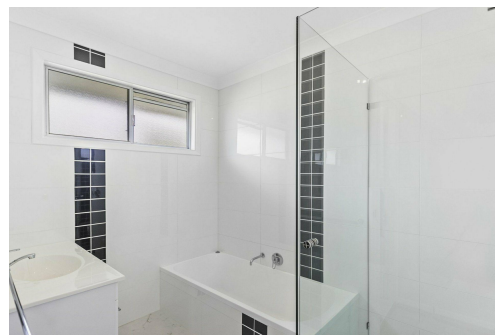
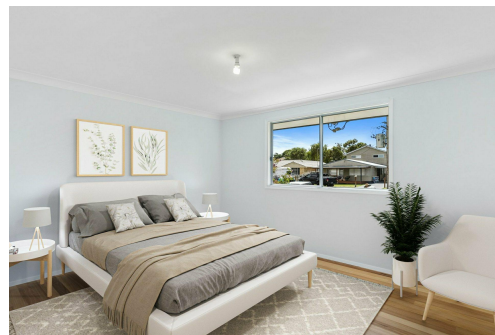
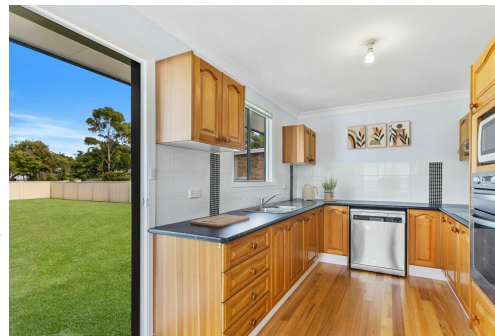
Disclaimer: All information contained herein is gathered from sources we consider to be reliable, however we cannot guarantee or give any warranty about the information provided. All images, border/s, property boundaries and floor plans are indicative of the property and for illustrative purposes only. Any development potential stated herein is suggestive only and may be subject to relevant approvals, as such it is not to be relied upon. All distances and measurements are approximate. Interested parties must solely rely on their own enquiries.

More About this Property

Property ID	WHEGJF
Property Type	House
Land Area	746 m2

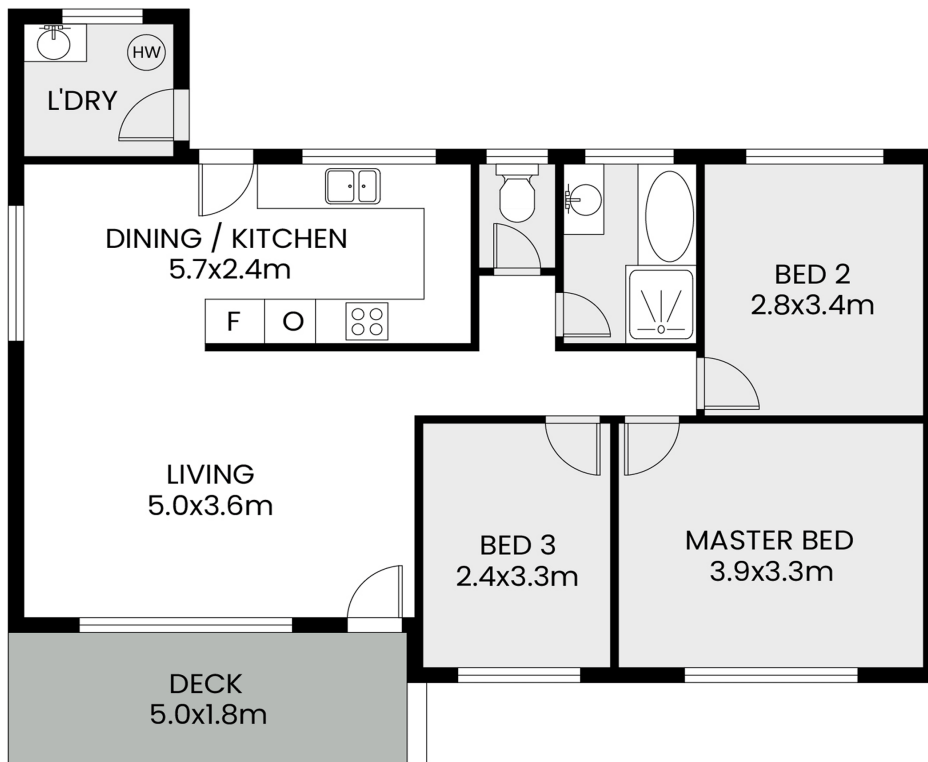
Justin Bond 0406 999 007
Principal - Licensee | justin.bond@ljhooker.com.au
Belinda Bond 0400 544 557
Principal - Licensee | belinda.bond@ljhooker.com.au

LJ Hooker Tumbi Umbi | Killarney Vale | Bateau Bay (02) 4389 1722
Shop 2, 140 Wyong Road, KILLARNEY VALE NSW 2261
tumbiumbi.ljhooker.com.au | tumbiumbi@ljhooker.com.au

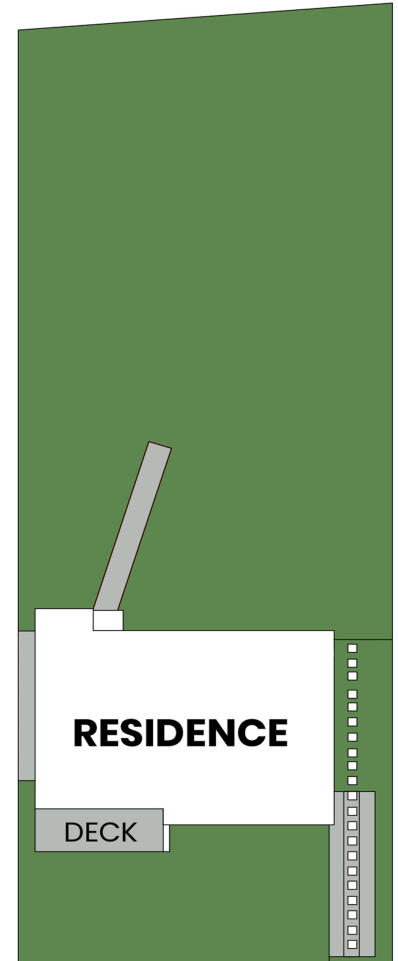


Disclaimer: All information contained therein is gathered from relevant third parties sources. We cannot guarantee or give any warranty about the information provided. Interested parties must rely solely on their own enquiries.

LJ Hooker Tumbi Umbi | Killarney Vale | Bateau Bay (02) 4389 1722



FLOOR PLAN



SITE PLAN

50 Playford Road Killarney Vale

Scale in metres. Indicative only. Measurements and dimensions are approximate.
All information contained herein is gathered from sources we believe to be reliable.
However we cannot guarantee its accuracy and interested persons should rely on their own enquiries.



APPROX. INT : 78m²
LAND: 746m²



Disclaimer: All information contained therein is gathered from relevant third parties sources.
We cannot guarantee or give any warranty about the information provided. Interested parties must rely solely on their own enquiries.

**LJ Hooker Tumby Umbi | Killarney
Vale | Bateau Bay
(02) 4389 1722**