

Killarney Vale, 4 George Hely Crescent

High Set on the Lakeside!

Occupying a commanding position in the street, is this lovingly cared for original brick and tile family home.

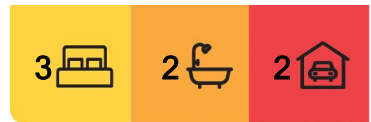
Finished with some modern updates, and ready for you to occupy for years ahead, whilst still leaving scope to add value through further renovations.

The home itself features:

- * A private courtyard leads the way to the main entry, step inside to an air conditioned living area, dining and kitchen area.
- * Downstairs master bedroom with built in robe and renovated ensuite, with generous shower space.
- * Original kitchen and meals area.
- * Internal laundry and understairs storage area.



Disclaimer: All information contained therein is gathered from relevant third parties sources. We cannot guarantee or give any warranty about the information provided. Interested parties must rely solely on their own enquiries.



For Sale
Please Call

View
ljhooker.com.au/WFCGJF

Contact
Justin Bond
0406 999 007
justin.bond@ljhooker.com.au
Belinda Bond
0400 544 557
belinda.bond@ljhooker.com.au

LJ Hooker Tumbi Umbi | Killarney Vale | Bateau Bay
(02) 4389 1722

- * Two more bedrooms with built in robes upstairs, plus a study room.
- * Upstairs also features a generous family room with a kitchenette, plus balcony and stairs to access the rear yard.

Outdoors offers a private entertaining area, within the secured front courtyard that is ideal for BBQs plus there is additional rear yard.

Garaging is taken care of by a double lock up with internal access, plus there are some storage sheds at the rear.

The key to this home is the solid original construction, that allows and opportunity to secure your renovation project in a tightly held location – high set on the lakeside of Killarney Vale, whilst being clean and livable in the meantime.

The Location:

- * 450 m the Tuggerah Lakes foreshore and cycle way.
- * 1 km to Coles Killarney Vale, restaurants and Cafes.
- * 1.6 kms to Mingara Recreation Centre.
- * 3.2 kms to Bay Village Square.
- * 3.5 kms to Shelly Beach and Golf Club.
- * Approximately 10 kms to Tuggerah Station and Motorway.

Be sure to contact Justin or Belinda for further information on this amazing opportunity!

Disclaimer: All information contained herein is gathered from sources we consider to be reliable, however we cannot guarantee or give any warranty about the information provided. All images, border/s, property boundaries and floor plans are indicative of the property and for illustrative purposes only. Any development potential stated herein is suggestive only and may be subject to relevant approvals, as such it is not to be relied upon. All distances and measurements are approximate. Interested parties must solely rely on their own enquiries.

More About this Property

Property ID	WFCGJF
Property Type	House
Land Area	607 m2

Justin Bond 0406 999 007

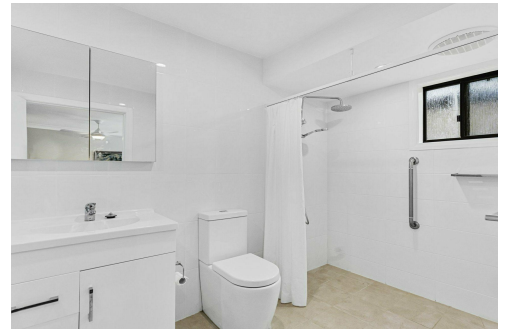
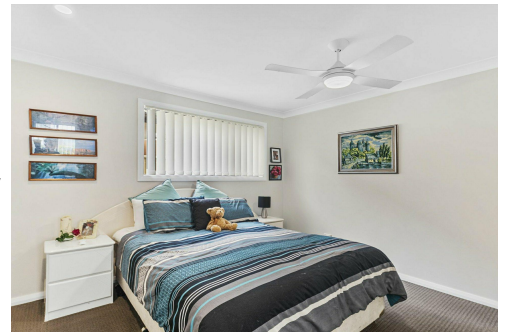
Principal - Licensee | justin.bond@ljhooker.com.au

Belinda Bond 0400 544 557

Principal - Licensee | belinda.bond@ljhooker.com.au

LJ Hooker Tumby Umbi | Killarney Vale | Bateau Bay (02) 4389 1722

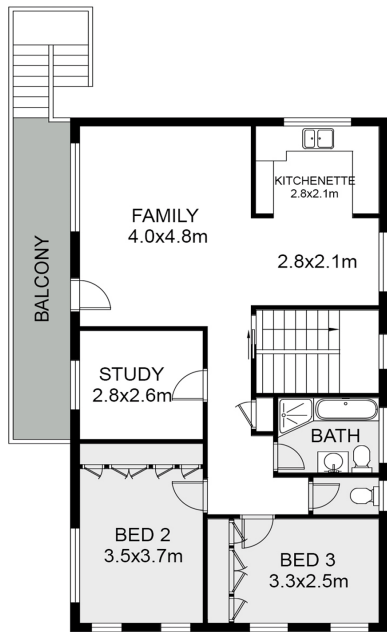
Shop 2, 140 Wyong Road, KILLARNEY VALE NSW 2261
tumbiumbi.ljhooker.com.au | tumbiumbi@ljhooker.com.au



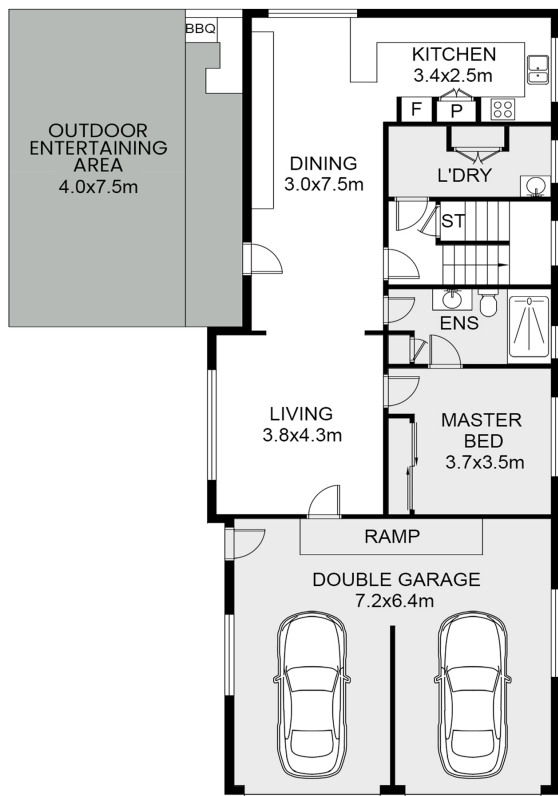
Disclaimer: All information contained therein is gathered from relevant third parties sources. We cannot guarantee or give any warranty about the information provided. Interested parties must rely solely on their own enquiries.

LJ Hooker Tumby Umbi | Killarney Vale | Bateau Bay (02) 4389 1722

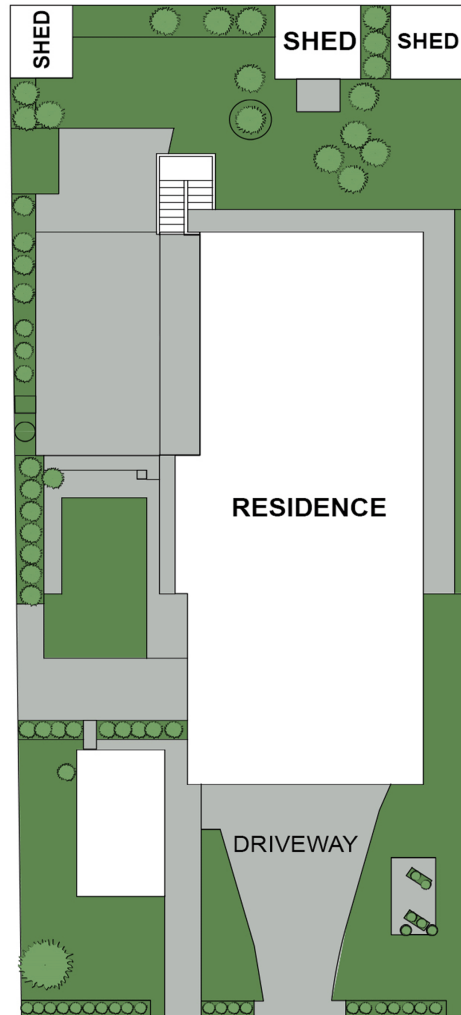
4 George Hely Crescent Killarney Vale



FIRST FLOOR



GROUND FLOOR



SITE PLAN

Scale in meter. Indicative only. Measurement and dimensions are approximate.
 All information contained herein is gathered from source we believe to be reliable.
 However we cannot guarantee its accuracy and interested persons should rely on their own enquiries.

APPROX. INT : 165m²



**LJ Hooker Tumbi Umbi | Killarney
 Vale | Bateau Bay
 (02) 4389 1722**

Disclaimer: All information contained therein is gathered from relevant third parties sources.
 We cannot guarantee or give any warranty about the information provided. Interested parties must rely solely on their own enquiries.