

Killarney Vale, 23 Pendant Parade

Quality Single Level Living!

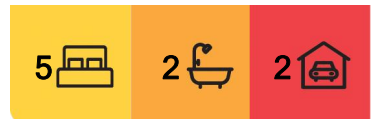
High set with a stunning outlook capturing a district view, is this quality single level family home with a sparkling in ground pool.

Generous proportions throughout.

Step inside and be amazed by the space!

Featuring:

- * Large front living area with bay windows.
- * 5 well-proportioned bedrooms including ensuite to the main.
- * Updated kitchen with modern appliances, the provision for a dishwasher and storage a plenty.
- * Updated main bathroom with open shower and large spa bath.



For Sale
Please Call

View
ljhooker.com.au/WD0GJF

Contact
Justin Bond
0406 999 007
justin.bond@ljhooker.com.au
Belinda Bond
0400 544 557
belinda.bond@ljhooker.com.au



Disclaimer: All information contained therein is gathered from relevant third parties sources. We cannot guarantee or give any warranty about the information provided. Interested parties must rely solely on their own enquiries.

LJ Hooker Tumbi Umbi | Killarney Vale | Bateau Bay
(02) 4389 1722

- * Separate dining / living plus an oversized rear family room.
- * Internal laundry with extra storage.

Outdoors this home really comes to life with a low maintenance rear yard.

Including a sparkling solar heated in ground pool just in time for summer, a BBQ area with its ideal NW aspect to soak up the sun all day long - or keep cool in the sunroom area.

A tandem garage makes for plenty of extra storage space and off street parking.

Finished throughout with near new carpet, paint, and an Actron Air ducted air conditioning system keeping you comfortable all year round.

The Location:

- * 3.4 kms to Shelly Beach Golf Course.
- * 2.9 kms to Tuggerah Lakes Secondary College.
- * 800 m to Coles Killarney Vale.
- * 3.4 kms to Bay Village Square.
- * Approximately 10 kms to Tuggerah Station, Westfield Tuggerah and M1 Motor way.

Single level homes are always in demand and appeal to the broad market.

Offered to the market for sale for the first time in over 25 years. Be quick to contact Justin or Belinda to make this one a home of your very own.

Disclaimer: All information contained herein is gathered from sources we consider to be reliable, however we cannot guarantee or give any warranty about the information provided. All images, border/s, property boundaries and floor plans are indicative of the property and for illustrative purposes only. Any development potential stated herein is suggestive only and may be subject to relevant approvals, as such it is not to be relied upon. All distances and measurements are approximate. Interested parties must solely rely on their own enquiries.

More About this Property

Property ID	WD0GJF
Property Type	House
Land Area	607 m ²

Justin Bond 0406 999 007

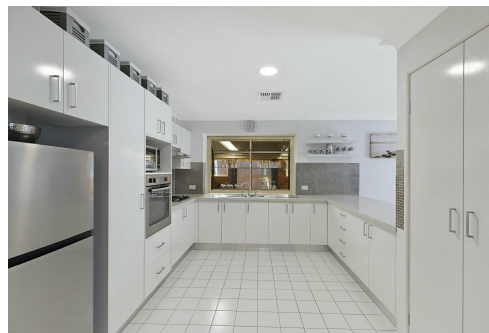
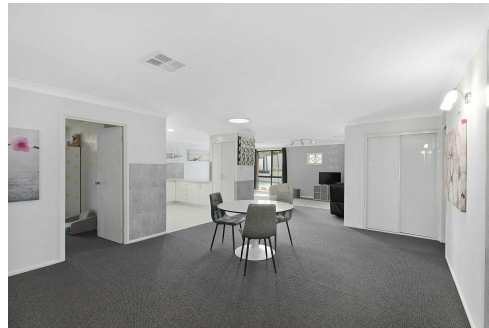
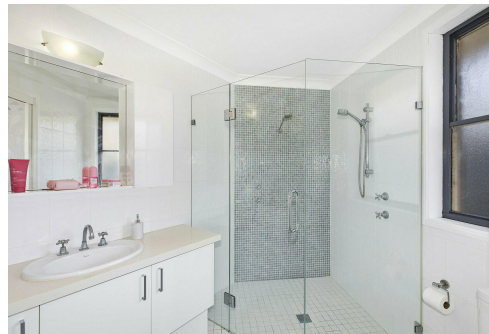
Principal - Licensee | justin.bond@ljhooker.com.au

Belinda Bond 0400 544 557

Principal - Licensee | belinda.bond@ljhooker.com.au

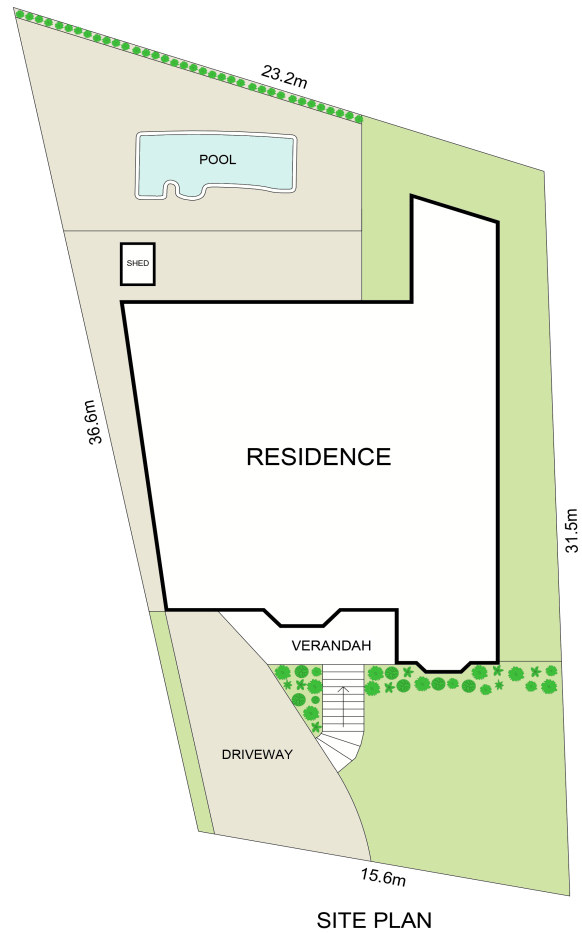
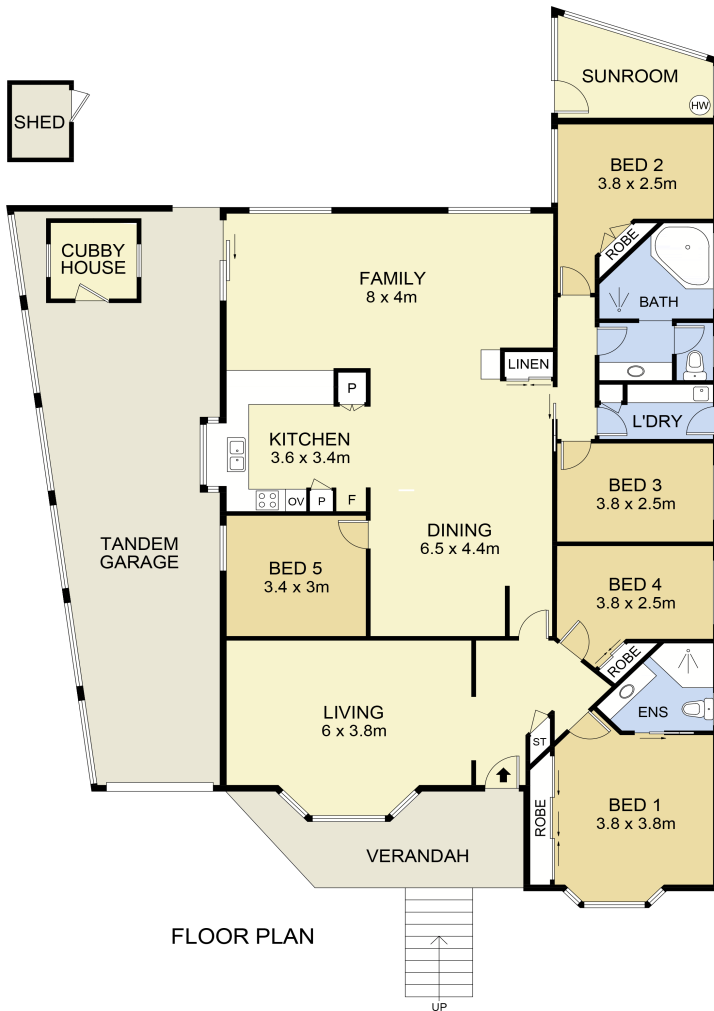
LJ Hooker Tumby Umbi | Killarney Vale | Bateau Bay (02) 4389 1722

Shop 2, 140 Wyong Road, KILLARNEY VALE NSW 2261
tumbiumbi.ljhooker.com.au | tumbiumbi@ljhooker.com.au



Disclaimer: All information contained therein is gathered from relevant third parties sources. We cannot guarantee or give any warranty about the information provided. Interested parties must rely solely on their own enquiries.

LJ Hooker Tumby Umbi | Killarney Vale | Bateau Bay (02) 4389 1722



0 1 2 3 4 5 SCALE (METRES)

Scale in metres. Indicative only. Dimensions are approximate. All information contained herein is gathered from sources we believe to be reliable. However we cannot guarantee its accuracy and interested persons should rely on their own enquiries

INT : 253m²
EXT : 13m² **NOT TO SCALE**



23 Pendant Parade, Killarney Vale