



Killarney Vale, 21 Pendant Parade

Well Presented Large Family Living!

Occupying an enviable position on the high side of the street with an elevated aspect, is this solidly constructed brick and tile family home.

Offering five generous bedrooms.

Plenty of living space.

Recently refreshed throughout, while still allowing scope to add value!

Step inside to:

- * A generous main living area and family room.
- * Main bedroom with ensuite.
- * Newly upgraded kitchen with Fisher & Paykel appliances, dishwasher and plenty of



Disclaimer: All information contained therein is gathered from relevant third parties sources. We cannot guarantee or give any warranty about the information provided. Interested parties must rely solely on their own enquiries.

SOLD

5

2

2

For Sale
Please Call

View
ljhooker.com.au/WHTGJF

Contact
Justin Bond
0406 999 007
justin.bond@ljhooker.com.au
Belinda Bond
0400 544 557
belinda.bond@ljhooker.com.au

**LJ Hooker Tumbi Umbi | Killarney
Vale | Bateau Bay
(02) 4389 1722**

storage.

- * Large dining area that adjoins the outdoor entertaining area.
- * All bedrooms feature built in robes, with the master and two rear bedrooms being particularly generous in size.
- * Newly renovated W/C.
- * Main bathroom with separate bath and shower.
- * Internal laundry.

Outdoors is an entertaining area - the perfect place to relax, enjoy a drink, while you watch the kids play in the in ground pool.

A double lock up garage caters for vehicles, or your extra storage needs.

Finished throughout with square set cornices, LED downlights, curtains, plus brand new Actron ducted air with Wi-Fi and programmable zones, engineered flooring and neutral tones and highlights.

The Location:

- * 400 m to Killarney Vale Public School.
- * 800 m to Coles Killarney Vale.
- * 2.9 kms to Tuggerah Lakes Secondary College.
- * 3.4 kms to Shelly Beach Golf Course.
- * 3.4 kms to Bay Village Square.
- * Approximately 10 kms to Tuggerah Station, Westfield Tuggerah and M1 Motor way.

Be quick to secure this desirable family home, for more information be sure to reach out to Justin or Belinda today.

Disclaimer: All information contained herein is gathered from sources we consider to be reliable, however we cannot guarantee or give any warranty about the information provided. All images, border/s, property boundaries and floor plans are indicative of the property and for illustrative purposes only. Any development potential stated herein is suggestive only and may be subject to relevant approvals, as such it is not to be relied upon. All distances and measurements are approximate. Interested parties must solely rely on their own enquiries.

More About this Property

Property ID	WHTGJF
Property Type	House
Land Area	575 m2

Justin Bond 0406 999 007

Principal - Licensee | justin.bond@ljhooker.com.au

Belinda Bond 0400 544 557

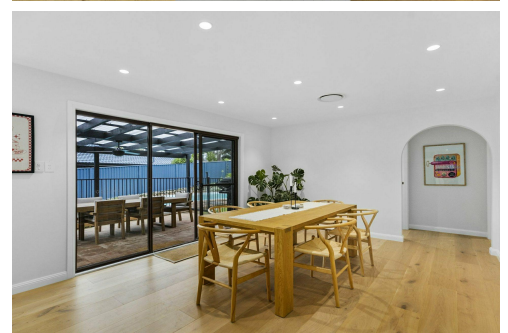
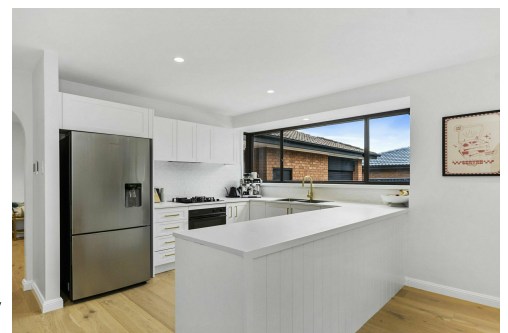
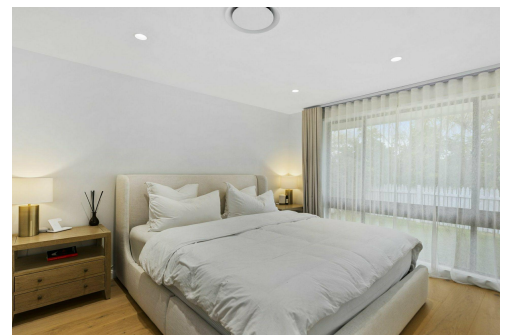
Principal - Licensee | belinda.bond@ljhooker.com.au

LJ Hooker Tumby Umbi | Killarney Vale | Bateau Bay (02) 4389 1722

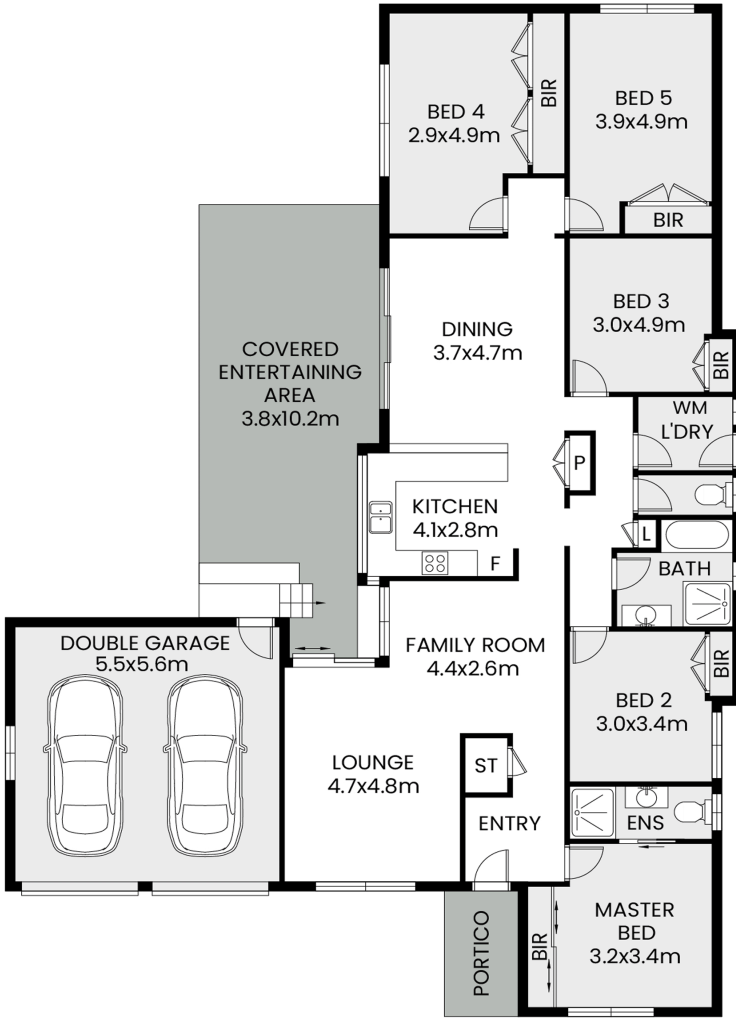
Shop 2, 140 Wyong Road, KILLARNEY VALE NSW 2261
tumbiumbi.ljhooker.com.au | tumbiumbi@ljhooker.com.au



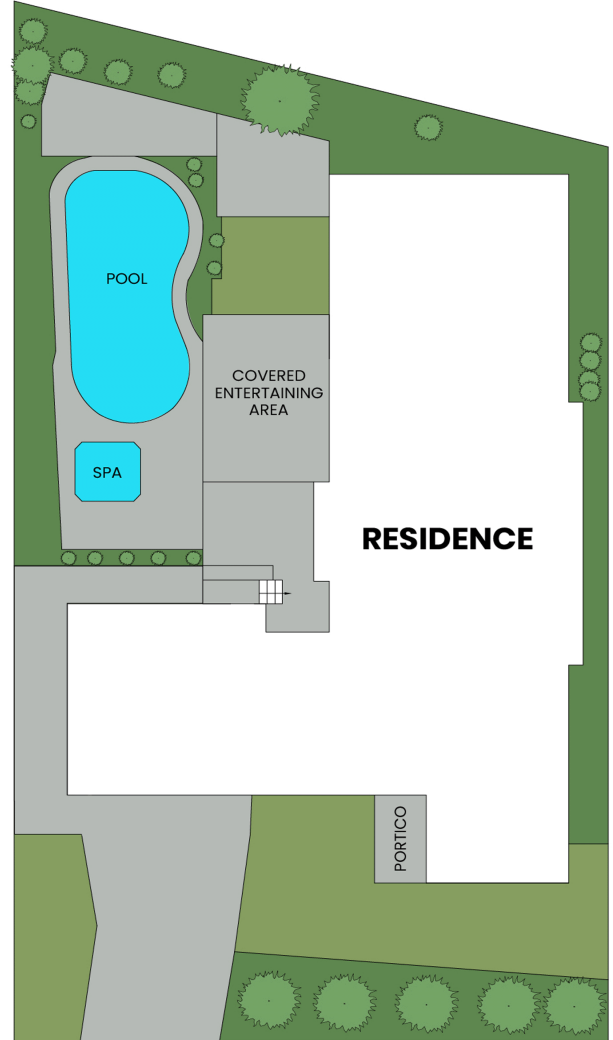
Disclaimer: All information contained therein is gathered from relevant third parties sources. We cannot guarantee or give any warranty about the information provided. Interested parties must rely solely on their own enquiries.



**LJ Hooker Tumby Umbi | Killarney
Vale | Bateau Bay
(02) 4389 1722**



FLOOR PLAN



SITE PLAN

21 Pendant Parade Killarney Vale

Scale in metres. Indicative only. Measurements and dimensions are approximate.
 All information contained herein is gathered from sources we believe to be reliable.
 However we cannot guarantee its accuracy and interested persons should rely on their own enquiries.



APPROX. INT : 185m²



LJ Hooker Tumbi Umbi | Killarney
 Vale | Bateau Bay
 (02) 4389 1722

Disclaimer: All information contained therein is gathered from relevant third parties sources.
 We cannot guarantee or give any warranty about the information provided. Interested parties must rely solely on their own enquiries.