

Killara, 2 Killara Avenue

Prime Development Opportunity in Killara's Prestigious Upper North Shore

LJ Hooker Gordon & Colliers are excited to exclusively present 2 Killara Avenue, Killara - a boutique development opportunity in a highly sought-after location.

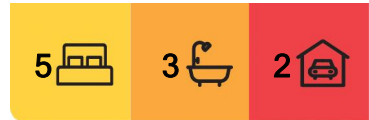
Positioned on a north-to-rear 912sqm land parcel*, this exceptional site offers R3 Medium Density Residential zoning, making it ideal for townhouses, apartments, or shop-top housing (STCA). Falling within the Low and Mid-Rise Housing Policy area, the site benefits from a 1.5:1 FSR and a 17.5m height limit, allowing for higher-density development while preserving the character of the surrounding neighbourhood.

Unmatched Location & Connectivity:

- Within 700m approx. of Killara Train Station, providing direct access to Chatswood, Macquarie, and Sydney's CBD in under 30 minutes
- Just 900m approx. from Lindfield Village, with supermarkets, caf´s, and retail



Disclaimer: All information contained therein is gathered from relevant third parties sources. We cannot guarantee or give any warranty about the information provided. Interested parties must rely solely on their own enquiries.



For Sale
SOLD within 3 Weeks!

View
ljhooker.com.au/SRANHJX

Contact
Jing Peng
0424 262 673
jingpeng@ljhookergordon.com.au
Kenny Gong
0456 887 000
kgong@ljhookergordon.com.au

LJ Hooker Gordon
(02) 9496 8000

stores, and only 4km approx. from Chatswood's business and shopping hub

- Close to elite schools such as Ravenswood, Pymble Ladies' College, and Killara High School

- Moments from Killara Golf Club, one of Sydney's premier golf courses

- Easy access to Gordon Recreation Ground and Lindfield Sports Centre, making it ideal for families and active lifestyles

Additional Highlights:

- 912sqm functional land in a quiet and tranquil setting

- Not in a Heritage Conservation Area, offering flexibility for development

- Existing 5-bed, 3-bath, 2-car home, providing potential rental income before construction, currently leased @ \$1200/week

2 Killara Avenue, Killara is for sale via on-site Auction on Thursday, 10 April 2025. For further details, please contact the exclusive agents

*All figures are approximate.

^ STCA – Subject to Council Approval.

CONTACT:

LJ Hooker

Jing Peng - 0424 262 673

Kenny Gong - 0456 887 000

Colliers:

Zhenni Lu - 0433 230 625

Joseph Lin - 0452 070 980

DISCLAIMER: All information contained herein is gathered from sources that we believe reliable. We have no reason to doubt its accuracy, however we cannot guarantee it. This information is not to be used in formalising any decision nor used by a third party without the expressed written permission of LJ Hooker Gordon.

More About this Property

Property ID	SRNHJX
Property Type	House
Land Area	912 m2
Including	Toilets (3)

Jing Peng 0424 262 673

Principal | jingpeng@ljhookergordon.com.au

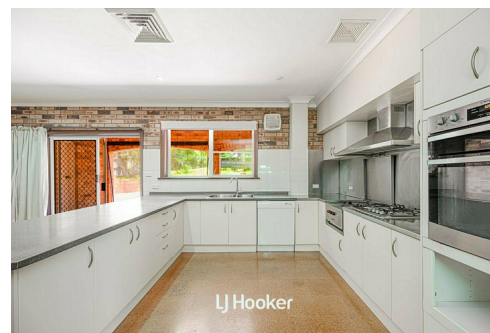
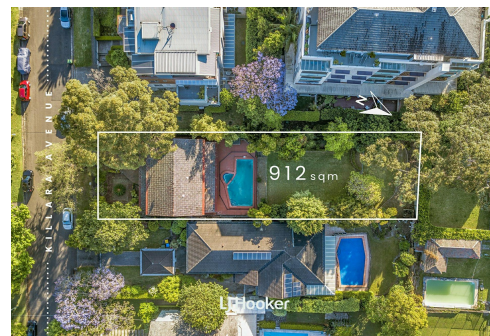
Kenny Gong 0456 887 000

Managing Director | Sales Executive | kgong@ljhookergordon.com.au

LJ Hooker Gordon (02) 9496 8000

Shop 1, 777-779 Pacific Highway, GORDON NSW 2072

gordon.ljhooker.com.au | reception@ljhookergordon.com.au





LJ Hooker
JING PENG
0424 262 673



Colliers
ZHENNI LU
0433 230 625



Disclaimer: All information contained therein is gathered from relevant third parties sources. We cannot guarantee or give any warranty about the information provided. Interested parties must rely solely on their own enquiries.

LJ Hooker Gordon
(02) 9496 8000