



20 Dawn Parade, Kianga

Coastal Elegance Meets Family Comfort

A truly magnificent home, packed with features for the whole family to enjoy.

This quality five-bedroom brick residence has been thoughtfully designed across two spacious levels.

On the upper level, you'll find a double garage, four generous bedrooms, a study, a light-filled living and dining area, plus an open-plan kitchen that takes in stunning views across to Montague Island. The back deck, framed by elegant brick columns, creates the perfect setting to relax or entertain while soaking up the spectacular ocean outlook.

The lower level opens to a vast second living area along with another bedroom and bathroom-ideal for guests, extended family, or even Airbnb accommodation. With its generous layout, this level also offers fantastic potential to create a self-contained granny flat (STCA), adding even more versatility to the home.

Outside, beautifully landscaped gardens complete the picture, leaving nothing to do but move in and enjoy. The owners are also willing to

5 3 2

FOR SALE
\$1,350,000

AGENTS

Steven Hutcheson
0407 226 603
steven.hutcheson@ljhooker.com.au

AGENCY

LJ Hooker Narooma
(02) 4476 1000

All information contained therein is gathered from relevant third parties sources.
We cannot guarantee or give any warranty about the information provided.
Interested parties must rely solely on their own enquiries.

LJ Hooker

include selected furniture in the sale, making the move even easier.

Take the first step toward securing your next home today-call Steve at LJ Hooker Narooma on 0407 22 66 03 to arrange your inspection.

MORE DETAILS

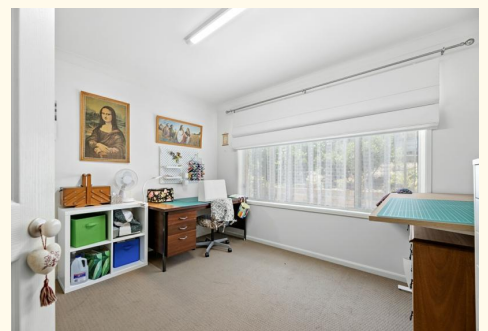
| | |
|---------------|---------|
| Property ID | 36KHMM |
| Property Type | House |
| Land Area | 1140 m2 |

Steven Hutcheson 0407 226 603

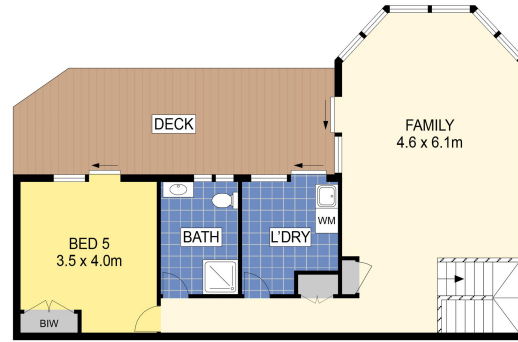
Licensed Real Estate Agent | steven.hutcheson@ljhooker.com.au

LJ Hooker Narooma (02) 4476 1000

Shop 6, 4 -6 Noorooma Crescent, NAROOMA NSW 2546
narooma.ljhooker.com.au | narooma@ljhooker.com.au



All information contained therein is gathered from relevant third parties sources.
We cannot guarantee or give any warranty about the information provided.
Interested parties must rely solely on their own enquiries.



INT : 252m²
EXT : 48m²



PLANS SHOWN ONLY INDICATIVE OF LAYOUT. DIMENSIONS ARE APPROXIMATE.

20 Dawn Parade, Kianga

 **LJ Hooker**

All information contained therein is gathered from relevant third parties sources.
We cannot guarantee or give any warranty about the information provided.
Interested parties must rely solely on their own enquiries.

 **LJ Hooker**