

Kewdale, 35 Jeffrey Street

Spacious Family Home



This property suits Families and Investors. This property sits on approx. 803sqm of land at end of a Cul-De-Sac and within walking distance to picturesque Tomato Lake, and only moments from shops, transport, schools and major highways.

Features:

- 4 massive bedrooms
- 3 bathrooms
- Multiple living zones
- Undercover entertaining area
- Drive through access to rear
- Zoned R20
- Massive backyard perfect for kids to entertain or to build a massive shed.

Shire Rate Approx. \$2450



Disclaimer: All information contained therein is gathered from relevant third parties sources. We cannot guarantee or give any warranty about the information provided. Interested parties must rely solely on their own enquiries.

For Sale
Please Call

View
ljhooker.com.au/8SSHA2

Contact
Sajad Ahmadyar
0405 602 210
saj.ahmadyar@ljhooker.com.au

LJ Hooker Thornlie | Canning Vale
(08) 9459 7788

Water Rate Approx. \$1550

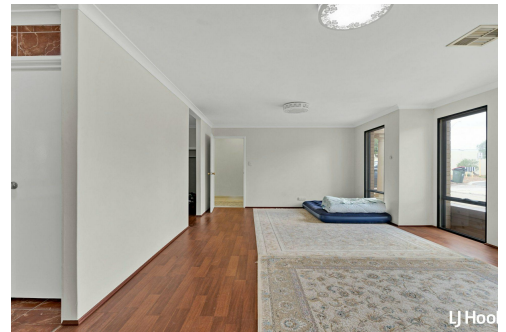
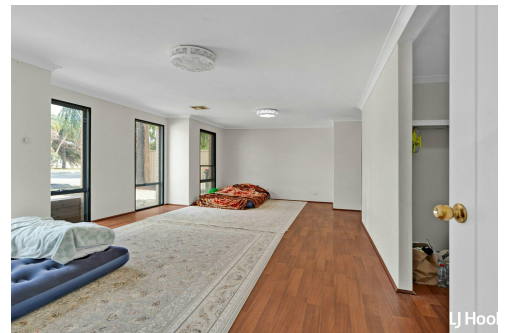
Disclaimer: All information contained therein is gathered from relevant third parties sources. We cannot guarantee or give any warranty about the information provided. Interested parties must rely solely on their own enquiries.

More About this Property

Property ID	8SSHA2
Property Type	House
Land Area	803 m2
Including	Outdoor Entertaining

Sajad Ahmadyar 0405 602 210
Sales Representative | saj.ahmadyar@ljhooker.com.au

LJ Hooker Thornlie | Canning Vale (08) 9459 7788
Shop 26 Thornlie Square Shopping Centre, Spencer Road, THORNIE WA 6108
thornlie.ljhooker.com.au | thornlie@ljhooker.com.au



Disclaimer: All information contained therein is gathered from relevant third parties sources. We cannot guarantee or give any warranty about the information provided. Interested parties must rely solely on their own enquiries.

LJ Hooker Thornlie | Canning Vale
(08) 9459 7788