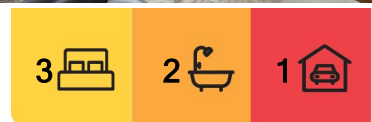


Kew, 48 Murray Street

A Labour of Love, Creating a Lasting Legacy

Auction Location: 63 Musselburgh Rise

Set on a sun-drenched, north-facing site with views over the harbour, this exceptional home is a true masterpiece. From every room, picturesque vistas offer a serene and captivating backdrop. Originally built in the 1913 as a Presbyterian Manse, the property exudes timeless elegance with its stunning original features. Over the past 32 years, the current owners have thoughtfully and sympathetically modernised the home, seamlessly blending classic charm with contemporary comforts and energy efficiency, including extensive double glazing, solar hot water and an air transfer system ideal for today's family living. Spanning across generous spaces, the home offers three spacious double bedrooms and a dedicated office. The master suite is a retreat in itself, complete with a stylish ensuite. There are two generous living areas: a formal front lounge with sweeping harbour views, and an expansive open-plan family kitchen and living space. The kitchen boasts ample storage, generous bench space, and skylights above that flood the room with



For Sale
Auction

View
ljhooker.co.nz/3P7RGDS

Contact
Pam Mulder
027 454 3366
Pam@ljhdunedin.co.nz



Disclaimer: All information contained therein is gathered from relevant third parties sources. We cannot guarantee or give any warranty about the information provided. Interested parties must rely solely on their own enquiries.

LJ Hooker Dunedin
(03) 470 1370
Wayne Graham Realty Ltd

natural light--perfect for both everyday living and entertaining. The family living area flows effortlessly out to a sunny, sheltered, and private covered courtyard, nestled in a stunning garden setting that is nothing short of spectacular. This home is beyond compare, offering a rare combination of heritage, style, and modern functionality. Perfectly located with easy access to both the beach and the city, it is an absolute must-see for those seeking a special family home.

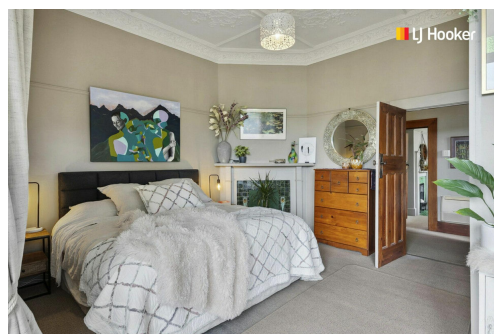
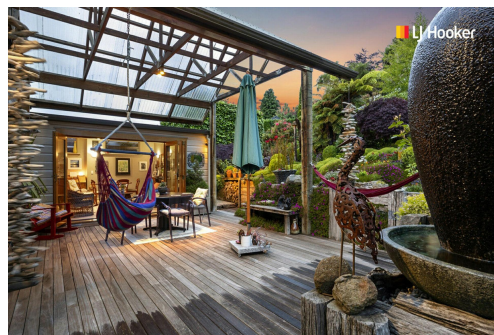
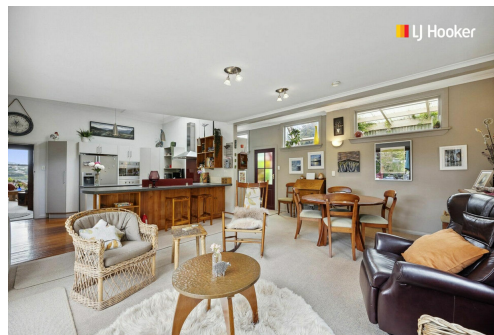
Don't miss out. Register your interest today--this one won't last long.

More About this Property

Property ID	3P7RGDS
Property Type	House
Land Area	1012 m²
Licensed Real Estate Agents (REAA2008)	

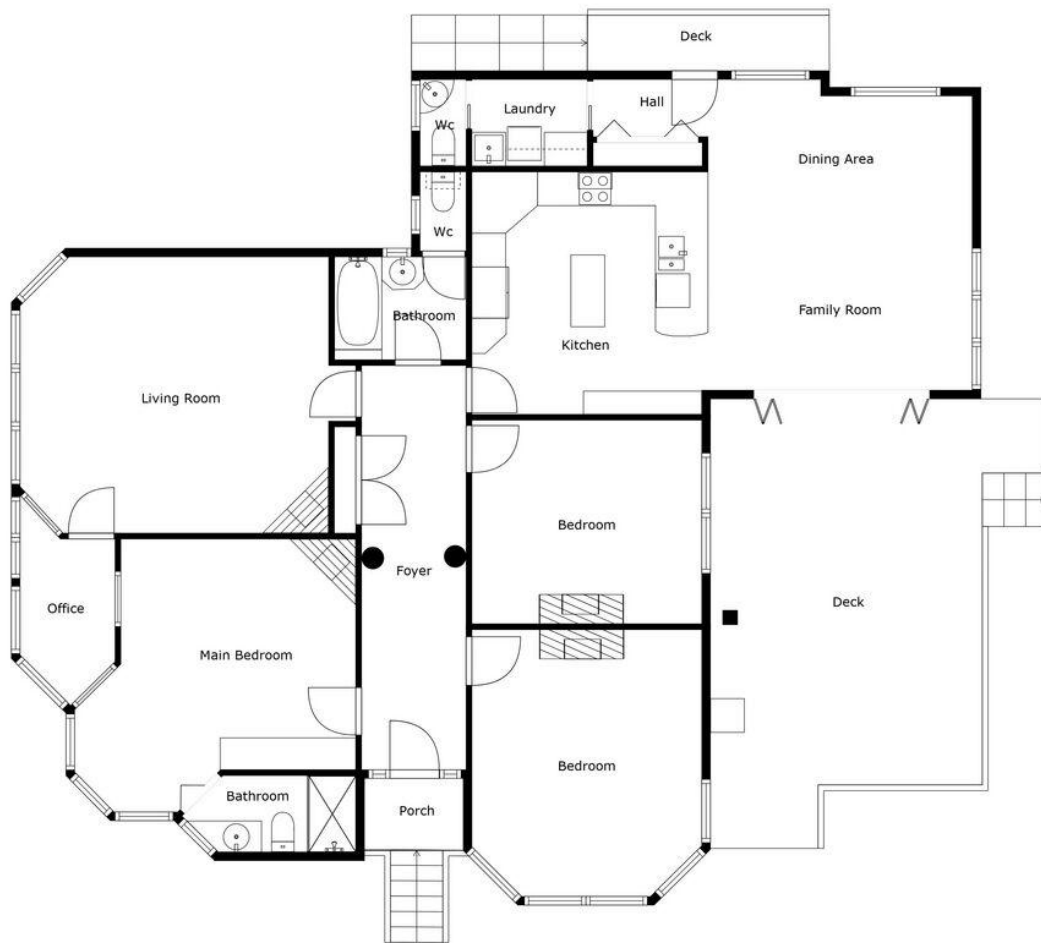
Pam Mulder 027 454 3366
 Licensee/Auctioneer | Pam@ljhdunedin.co.nz

LJ Hooker Dunedin (03) 470 1370
 Wayne Graham Realty Ltd
 63 Musselburgh Rise, DUNEDIN 9013
 dunedin.ljhooker.co.nz | dunedin@ljhdunedin.co.nz



Disclaimer: All information contained therein is gathered from relevant third parties sources. We cannot guarantee or give any warranty about the information provided. Interested parties must rely solely on their own enquiries.

LJ Hooker Dunedin
(03) 470 1370
 Wayne Graham Realty Ltd



Sizes And Dimensions Are Approximate, Actual May Vary