

## Kew, 19 Middleton Road

### A Peaceful Sanctuary in the Heart of the City

Step into a truly exceptional piece of Dunedin's history with this iconic residence that perfectly captures the stunning sunrise views stretching along Otago Harbour. Known as 'Ngaruroa' or 'Long Wave,' this home offers breathtaking vistas sweeping across the city from Mt Cargill to St Kilda Beach.

This four-plus bedroom character property is rich with heritage charm -- featuring exquisite hand-crafted stained glass windows, Royal Doulton foyer tiles imported from the UK, and beautifully carved timber detailing throughout. Inside, you'll find an impressive array of native timbers, highlighted by the striking Kauri flooring in the hallway and the Rimu timber flooring in the porch area, which now forms part of a modern, functional kitchen space. Designed with entertaining in mind, the layout offers spacious living areas flanking the kitchen. One lounge boasts stunning views of the harbour and on the opposite side, the former grand ballroom has been transformed into a living space perfect for family gatherings or a game of snooker with friends. Bedrooms in this classic home are generously proportioned, with ducted heat pump heating ensuring year-round comfort.

5

2

2

**For Sale**  
Set Sale

**View**  
Sun 10th Aug @ 12:45PM - 1:15PM

**Contact**  
**Trista Townsend**  
021 484 221  
Trista@ljdunedin.co.nz



**Disclaimer:** All information contained therein is gathered from relevant third parties sources. We cannot guarantee or give any warranty about the information provided. Interested parties must rely solely on their own enquiries.

**LJ Hooker Dunedin**  
**(03) 470 1370**  
Wayne Graham Realty Ltd



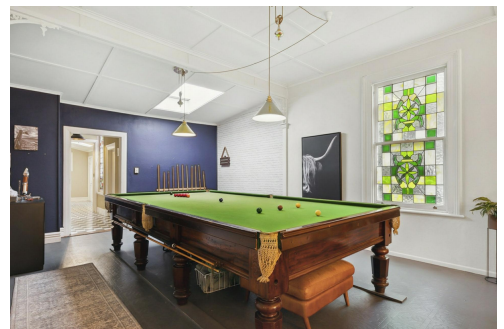
Additionally, there's a self-contained studio -- ideal for older children or extended family -- plus two more bathrooms, including a master ensuite. Set on a generous 1642sqm section, this home rests on a sturdy foundation of historic bluestone walls and has been meticulously maintained with genuine care. Garden lovers will be enchanted by the established grounds, flourishing with Pohutakawa trees, roses, tulips, peonies, rhododendrons, fruit trees, grapevines, and a variety of berries. If you're seeking a peaceful sanctuary to nourish your mind, body, and soul, this beautiful property could be the timeless oasis you've been dreaming of.

## More About this Property

Property ID	3Q5KGDS
Property Type	House
Land Area	1642 m2
Licensed Real Estate Agents (REAA2008)	

**Trista Townsend 021 484 221**  
Licensee | [Trista@ljhdunedin.co.nz](mailto:Trista@ljhdunedin.co.nz)

**LJ Hooker Dunedin (03) 470 1370**  
Wayne Graham Realty Ltd  
63 Musselburgh Rise, DUNEDIN 9013  
[dunedin.ljhooker.co.nz](mailto:dunedin.ljhooker.co.nz) | [dunedin@ljhdunedin.co.nz](mailto:dunedin@ljhdunedin.co.nz)



**Disclaimer:** All information contained therein is gathered from relevant third parties sources. We cannot guarantee or give any warranty about the information provided. Interested parties must rely solely on their own enquiries.

**LJ Hooker Dunedin**  
**(03) 470 1370**  
Wayne Graham Realty Ltd