



3/48 Belford Road, Kew East

Boutique Living in the Coveted Kew East Primary & Kew High School Zone

Beautifully renovated throughout and positioned within a boutique block of only six residences, this impressive two-bedroom apartment offers a perfect blend of style, comfort and convenience in one of Kew East's most desirable neighbourhoods.

Designed for effortless living, the spacious lounge flows into a contemporary kitchen and meals area featuring stone benchtops, quality cabinetry, ample storage and abundant natural light. Both generous bedrooms include built-in robes and are complemented by a stylish central bathroom with integrated laundry facilities.

Step outside to enjoy a private, low-maintenance courtyard framed by established greenery, providing a peaceful retreat for entertaining or unwinding.

Situated within the sought-after Kew East Primary School and Kew High School zones, the home is also just moments from Willsmere Park, Victoria Park, local cafés, shopping precincts and public transport, ensuring exceptional lifestyle convenience.

2 🏠 1 🚿 1 🚗

FOR SALE
\$780,000

VIEW
Sat 11th Jul @ 1:00PM - 1:30PM

AGENTS

Yuanyuan Chen
0415 831 789
yuanyuan.cityresmelbourne@ljhooker.com.au

John Meng
0430 808 998
jmeng.cityresmelbourne@ljhooker.com.au

AGENCY

LJ Hooker City Residential
(03) 9600 2166

All information contained therein is gathered from relevant third parties sources.
We cannot guarantee or give any warranty about the information provided.
Interested parties must rely solely on their own enquiries.

 **LJ Hooker**

Whether you're a first home buyer, downsizer or investor, this move-in-ready apartment presents an outstanding opportunity to secure a quality home in a tightly held inner-eastern location.

MORE DETAILS

Property ID	PRVHC2
Property Type	Apartment
Including	Air Conditioning
	Close to Schools
	Close to Shops
	Close to Transport

Yuanyuan Chen 0415 831 789

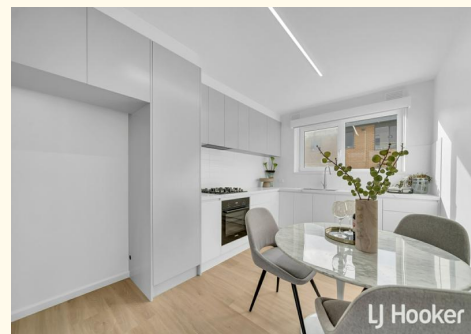
Senior Sales Consultant |
yuanyuan.cityresmelbourne@ljhooker.com.au

John Meng 0430 808 998

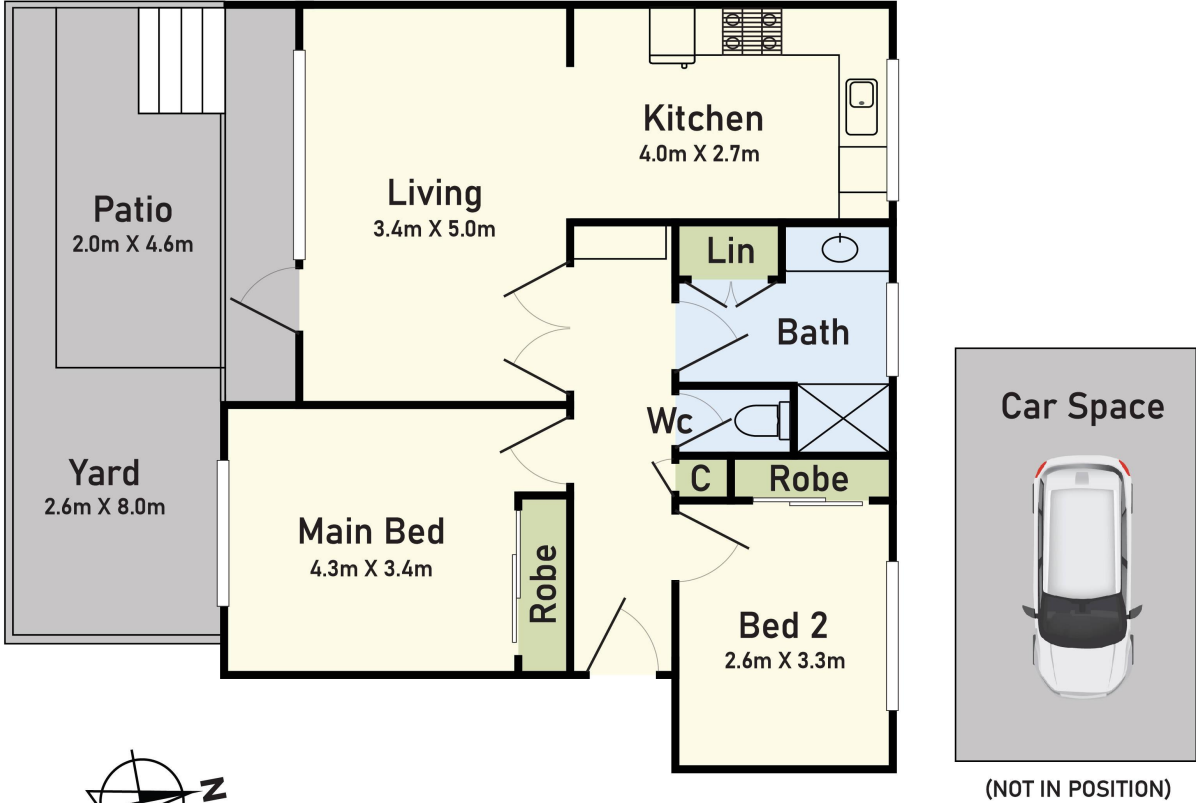
Principal, Managing Director, OIEC |
jmeng.cityresmelbourne@ljhooker.com.au

LJ Hooker City Residential (03) 9600 2166

Upper Ground Floor, 439-445 Lonsdale St, MELBOURNE VIC 3000
cityresmelbourne.ljhooker.com.au |
cityresmelbourne@ljhooker.com.au



Floor Plan



3/48 Belford Road, Kew East

* Dimensions are approximate and for illustrative purposes only

All information contained therein is gathered from relevant third parties sources. We cannot guarantee or give any warranty about the information provided. Interested parties must rely solely on their own enquiries.