



Kelvin Grove, 11 Rosalie Terrace

She's A Big Job Mate!

Okay, bring more than a paint brush! This property needs a bit of work, as they say. However, to the right person it's going to be fantastic.

Positioned in a prime location, this property puts convenience at your fingertips, close proximity to a supermarket, shops, and public transport just outside your doorstep.

Sitting on a generous 713m2 section, the property provides exciting possibilities for development. Whether you envision expansion, modernization, or a new project altogether, this is your canvas to create.

Perfect for a get up and go type of person who can see the potential of possibly the cheapest house in the street.

Price is by negotiation so call me today on 021474557 or come to an open home.



For Sale
By Negotiation

View
ljhooker.co.nz/W4UGFB

Contact
Peter Colville
021 474 557
peter.colville@ljhookerpn.co.nz



Disclaimer: All information contained therein is gathered from relevant third parties sources. We cannot guarantee or give any warranty about the information provided. Interested parties must rely solely on their own enquiries.

LJ Hooker Palmerston North
(06) 358 9009
Manawatu (1994) Ltd

More About this Property

Property ID	W4UGFB
Property Type	House
House Size	140 m ²
Land Area	713 m ²
Licensed Real Estate Agents (REAA2008)	

Peter Colville 021 474 557

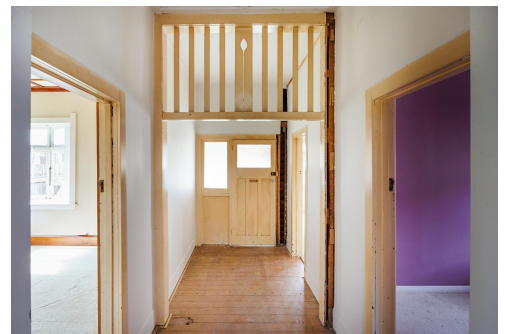
Marketing Consultant | peter.colville@ljhookerpn.co.nz

LJ Hooker Palmerston North (06) 358 9009

Manawatu (1994) Ltd

219 Broadway Avenue, PALMERSTON NORTH 4414

palmerstonnorth.ljhooker.co.nz | reception@ljhookerpn.co.nz



Disclaimer: All information contained therein is gathered from relevant third parties sources. We cannot guarantee or give any warranty about the information provided. Interested parties must rely solely on their own enquiries.

LJ Hooker Palmerston North
(06) 358 9009
Manawatu (1994) Ltd