



17 Ruby Round, Kelso

UNDER OFFER ...DUAL LIVING AT IT'S FINEST.....WITH TWO STREET ACCESS

Beautifully upgraded from top to bottom, this high-set home offers the ideal dual-living setup with separate access, modern finishes, and loads of extras.

Upstairs features:

- 3 bedrooms with brand new carpet
- Modern kitchen with dishwasher & electric cooker
- Tiled living areas, separate toilet & walk-in shower
- Laundry upstairs
- Split-system air-conditioning throughout

Downstairs includes:

- Kitchenette, dining & lounge areas
- Bathroom/laundry combination
- Two multipurpose rooms
- Fully tiled floors
- Split-system air-conditioning & separate access

Property highlights:

All information contained therein is gathered from relevant third parties sources.
We cannot guarantee or give any warranty about the information provided.
Interested parties must rely solely on their own enquiries.

3 2 3

FOR SALE

Offers Over \$595,000

AGENTS

Suzanne Coverlid

0439 032 210

suzanne.coverlid@ljhooker.com.au

AGENCY

LJ Hooker Townsville

07 44262125

LJ Hooker

- Two street access - Two bay carport on one side, one bay on the other
- New roof, windows, doors, cladding & Crimsafe screens
- New day/night blinds
- Chairlift
- Solar with battery backup + generator plug
- Deck overlooking fiberglass pool
- 2 garden sheds
- Security system
- 12.6kw solar with 39 panels, 19 battery backup

Everything done - modern, practical, and ready to move in!

MORE DETAILS

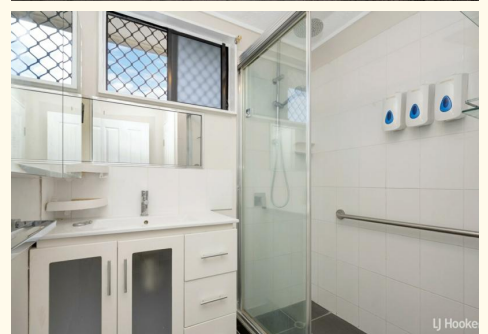
Property ID	451HWK
Property Type	House
Land Area	614 m2

Suzanne Coverlid 0439 032 210

Sales & Marketing Consultant | suzanne.coverlid@ljhooker.com.au

LJ Hooker Townsville 07 44262125

Shop 18/39 Eyre Street, NORTH WARD QLD 4810
townsville.ljhooker.com.au | townsville@ljhooker.com.au





Scale in metres. Indicative only. Dimensions are approximate. All information contained herein is gathered from sources we believe to be reliable. However we cannot guarantee its accuracy and interested persons should rely on their own enquiries.

TOTAL AREA : 205.9 sq.m

17 Ruby Round, Kelso