

Kelso, 65 Marsden Lane

Family Home with Dual Occ Potential

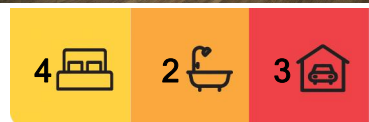
Situated in an enviable Trinity Heights with Mount Panorama views, this generous home situated on a large 1,037sqm block is a rare find at this price point! With a rental return of \$620 per week as well as development potential for granny flat or second dwelling (STCA) this home presents a great opportunity for families, developers and investors alike! Call Mark today to book your inspection!

Features include but are not limited to:

- Versatile layout with open plan living, dining and kitchen space
- Seperate formal lounge
- Spacious kitchen with ample bench space, storage and breakfast bar
- Large sunroom providing another year-round entertaining space
- Four generously sized bedrooms all with built-in robes
- Ducted heating in addition to split system air conditioning
- Double garage



Disclaimer: All information contained therein is gathered from relevant third parties sources. We cannot guarantee or give any warranty about the information provided. Interested parties must rely solely on their own enquiries.



For Sale
Guide \$740,000 - \$760,000

View
ljhooker.com.au/21WHZ6

Contact
Mark Dwyer
0498 003 774
mark.bathurst@ljhooker.com.au

LJ Hooker Bathurst
02 6331 5041

- Single bay shed at the rear of the property
- Close proximity to schools, shops and facilities
- Tenant currently in place paying \$570 per week

More About this Property

Property ID	21WHZ6
Property Type	House
Land Area	1037 m2
Including	Ducted Heating Toilets (2) Dishwasher Floorboards Built-in-Robes Fully Fenced Remote Garage

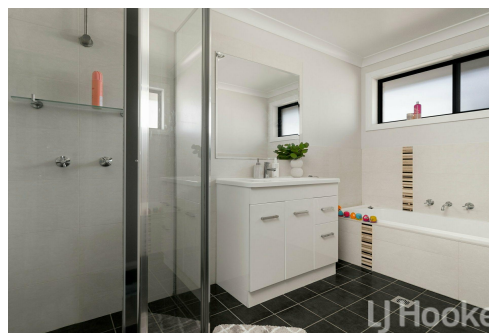
Mark Dwyer 0498 003 774

Director | Licensee In Charge | Sales Agent | mark.bathurst@ljhooker.com.au

LJ Hooker Bathurst 02 6331 5041

89 William Street, BATHURST NSW 2795

bathurst.ljhooker.com.au | bathurst@ljhooker.com.au



LJ Hooker Bathurst
02 6331 5041

Disclaimer: All information contained therein is gathered from relevant third parties sources. We cannot guarantee or give any warranty about the information provided. Interested parties must rely solely on their own enquiries.