






1/423 Hume Street, Kearneys Spring

2  1  1 

Neat and Sweet Single Level Unit walking distance to The Ridge Shopping Centre

FOR SALE
\$620,000

AGENTS

Matthew Keeley
0437 720 885
mkeeley@ljht.com.au

AGENCY

LJ Hooker Toowoomba
(07) 4688 2222

Affordable ground level apartment (one half of a Duplex) just a short walk to leading Shopping and Parks with great access into the CBD. This is a fantastic investment for the future or a great place to start your property journey.

- 2 built in bedrooms
- The bathroom offers a bath tub and a walk in shower with separate toilet
- Combined lounge and dining room
- Open plan kitchen with ample bench space
- Single lock up garage, or extra rumpus space
- Leased until the end of October 2026

This is an easy to maintain property in a high growth area. Perfect for the entry level buyer or downsizer seeking lifestyle and location.

We look forward to welcoming you at an inspection and feel free to email for additional information.

All information contained therein is gathered from relevant third parties sources.
We cannot guarantee or give any warranty about the information provided.
Interested parties must rely solely on their own enquiries.

 **LJ Hooker**

MORE DETAILS

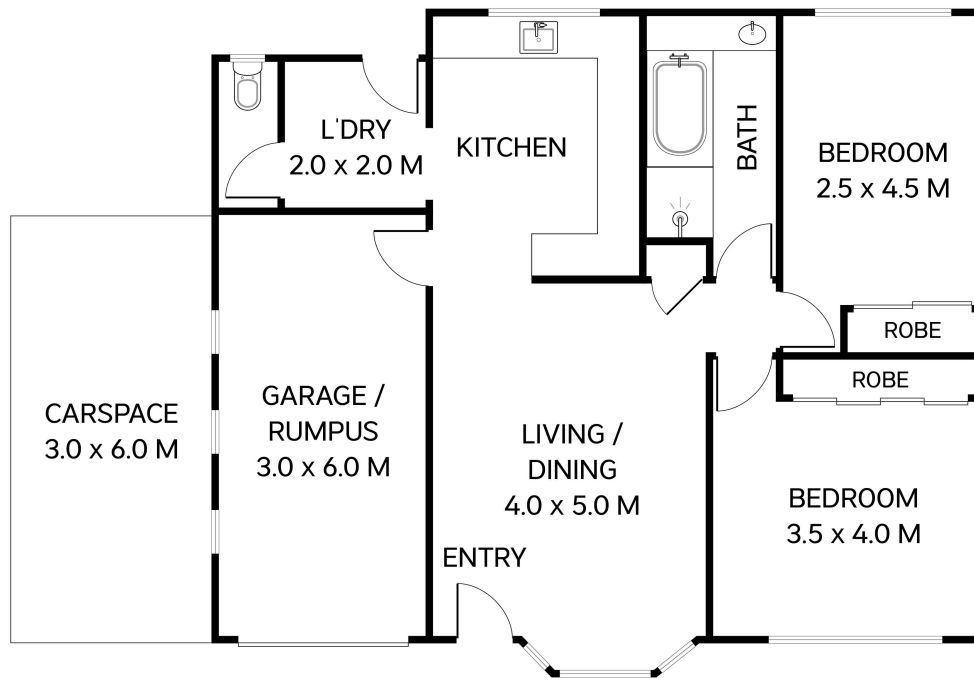
Property ID 1ZVHF4W
Property Type Unit

Matthew Keeley 0437 720 885
Residential Sales Manager | mkeeley@ljht.com.au

LJ Hooker Toowoomba (07) 4688 2222
Level 1, 677-683 Ruthven Street, TOOWOOMBA QLD 4350
toowoomba.ljhooker.com.au | toowoomba@ljht.com.au



All information contained therein is gathered from relevant third parties sources.
We cannot guarantee or give any warranty about the information provided.
Interested parties must rely solely on their own enquiries.



Total: 111m²

1/423 Hume Street
Kearneys Spring



This plan is for representational purposes only. All dimensions are approximate and shouldn't be solely relied upon.
Floorplan created by Vue Digital.