



## Kanimbla, 6 Harrison Close

Elevated Family Entertainer with Panoramic Views |  
1,356sqm

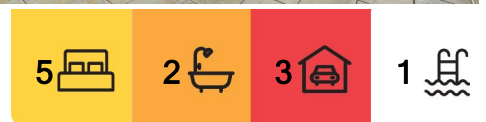
Nestled high in a quiet cul-de-sac with no rear neighbours, this double-storey residence captures breathtaking panoramic views and is designed for ultimate tropical living. With multiple indoor and outdoor living spaces, it's perfect for accommodating a large or extended family.

### Upper Level:

- Open plan living and dining area with high ceilings extends to the spacious timber deck, allowing cool breezes and natural light to circulate throughout.
- Well-appointed kitchen featuring stainless steel appliances, a servery to the deck, pantry and ample benchtop space and storage options.
- Spacious entertainer's deck with multiple zones, a built-in BBQ, and a wood-fired pizza oven - ideal for year-round entertaining.
- King sized master bedroom complete with walk-in-wardrobe and ensuite.



**Disclaimer:** All information contained therein is gathered from relevant third parties sources. We cannot guarantee or give any warranty about the information provided. Interested parties must rely solely on their own enquiries.



**For Sale**  
Please Call

**View**  
[ljhooker.com.au/3WNFFMB](http://ljhooker.com.au/3WNFFMB)

**Contact**  
**Kayla Pennefather**  
0429 364 945  
[kaylap@ljheh.com.au](mailto:kaylap@ljheh.com.au)

**LJ Hooker Cairns Edge Hill**  
**(07) 4053 9999**

- Additional multi-purpose room, perfect for guest accommodation, a children's playroom, or a teenager's retreat.
- Convenient powder room and a large internal laundry with generous storage.

Lower Level:

- Welcoming central foyer with an internal staircase leading to the upper level.
- Three spacious bedrooms.
- Large family bathroom.
- Spacious media room for family movie nights.
- Dedicated home office with built-in cabinetry.
- Workshop or additional storeroom for added convenience.

Other impressive features that complete this remarkable home include:

- Viewing platform offering 180-degree views across the surrounding mountain tops, complete with a built in chicken coop with automatic solar door beneath.
- 6.6kW solar system, tiled flooring, and split-system air conditioning throughout.
- Separately fenced in-ground swimming pool and a secure side yard, perfect for children and pets.
- Established fruit trees including Avocado, Lemon, Lime, Mulberry, Cumquat, Sugar Banana, Grumichama, Passionfruit and Pawpaw. Plus an extra large vegetable garden.
- Double carport (with an adapted pad for lowered vehicles), plus additional off-street parking for further vehicles, trailers, boats and caravans.

Centrally located to allow easy access to the Northern and Southern suburbs of Cairns and only moments to Cairns CBD, parklands, natural swimming holes, major shopping centres, local shops and schools.

Whether you're accommodating a large family or hosting unforgettable gatherings, this home has it all. Don't miss the chance to experience this tropical haven for yourself!

Call today to arrange your private inspection!



**LJ Hooker Cairns Edge Hill**  
**(07) 4053 9999**

**Disclaimer:** All information contained therein is gathered from relevant third parties sources. We cannot guarantee or give any warranty about the information provided. Interested parties must rely solely on their own enquiries.

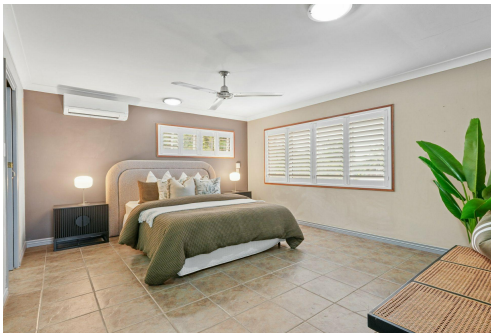


# More About this Property

Property ID	3WNFFMB
Property Type	House
Land Area	1356 m²
Including	Ensuite Study Air Conditioning Pool Deck Dishwasher Outdoor Entertaining Built-in-Robes Fully Fenced Solar Panels

Kayla Pennefather 0429 364 945  
Sales Consultant | [kaylap@ljheh.com.au](mailto:kaylap@ljheh.com.au)

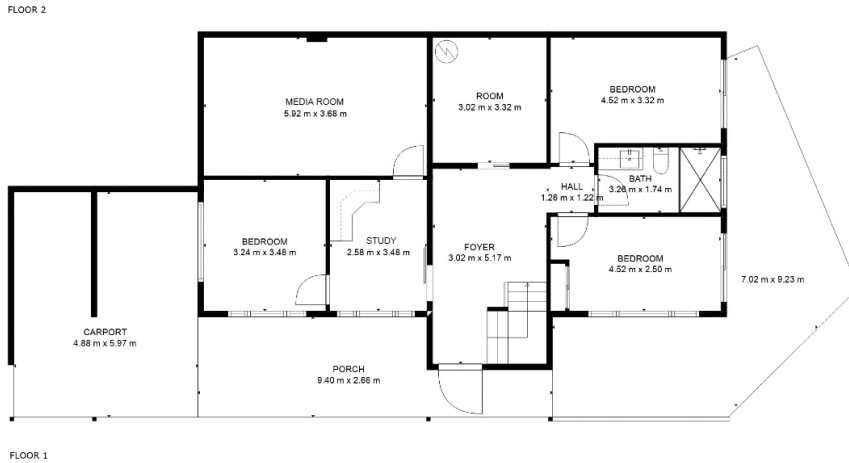
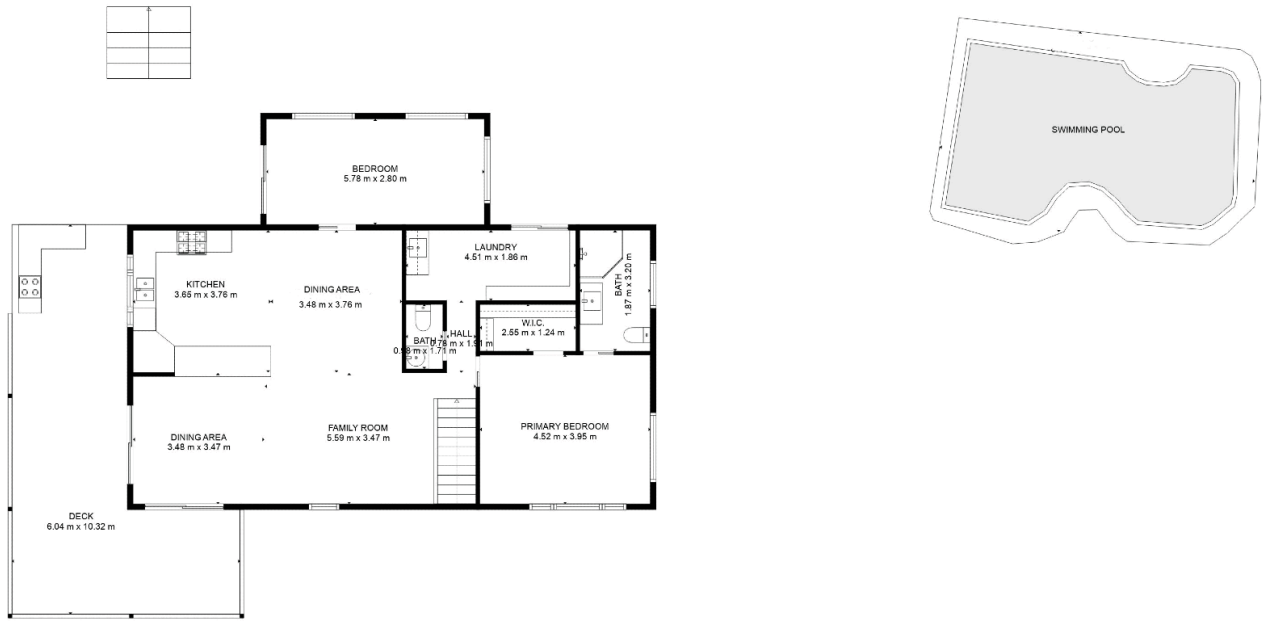
LJ Hooker Cairns Edge Hill (07) 4053 9999  
81 - 83 Woodward Street, EDGE HILL QLD 4870  
[cairnsedgehill.ljhooker.com.au](http://cairnsedgehill.ljhooker.com.au) | [cairnsedgehill@ljheh.com.au](mailto:cairnsedgehill@ljheh.com.au)



**Disclaimer:** All information contained therein is gathered from relevant third parties sources.  
We cannot guarantee or give any warranty about the information provided. Interested parties must rely solely on their own enquiries.

LJ Hooker Cairns Edge Hill  
(07) 4053 9999

# 6 Harrison Close, Kanimbla



Please note the site plan and floor plans are for marketing purposes and are to be used as a guide only.  
Measurements are approximate and should not be relied on.



**LJ Hooker Cairns Edge Hill**  
**(07) 4053 9999**

**Disclaimer:** All information contained therein is gathered from relevant third parties sources.  
We cannot guarantee or give any warranty about the information provided. Interested parties must rely solely on their own enquiries.