



## Kamerunga, 5 Cyathea Close

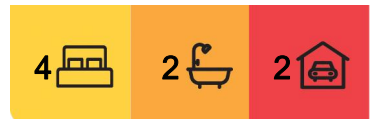
### Nature-Inspired Timber Retreat

Positioned in a private cul-de-sac with scenic surrounds, this exceptional timber retreat combines natural warmth with refined living, creating a lifestyle of comfort and elegance.

Inside, soaring raked ceilings, clerestory windows, and polished timber flooring set an impressive tone. Light and breezes flow through open-plan living spaces, extending seamlessly to an expansive covered deck, the perfect setting for stylish entertaining or quiet relaxation against a lush rainforest backdrop.

The kitchen is beautifully appointed with a 6-burner SMEG gas cooktop, Miele electric oven, Fisher & Paykel double dish drawer dishwasher, and a walk-in pantry with abundant shelving. A practical servery window opens directly to the deck, streamlining alfresco dining and social gatherings.

The master suite enjoys direct deck access, complemented by a walk-through wardrobe



#### For Sale

Offers over \$789,000

#### View

By Appointment

#### Contact

**Nadine Edwards**

0423 602 606

nedwards@ljheh.com.au

**Harriet Donnelly**

0417 160 171

harriet@ljheh.com.au



**Disclaimer:** All information contained therein is gathered from relevant third parties sources.

We cannot guarantee or give any warranty about the information provided. Interested parties must rely solely on their own enquiries.

**LJ Hooker Cairns Edge Hill**  
(07) 4053 9999



and private ensuite. Two additional bedrooms with built-in robes are serviced by a modern family bathroom featuring a luxurious spa bath and separate toilet.

The lower level offers flexibility with a fourth bedroom or executive home office and a well-designed laundry. Everyday convenience is assured with direct undercover access from the carport, providing ease of entry in all seasons.

Situated close to James Cook University, leading private and state schools, Smithfield and Redlynch Shopping Centres, Cairns CBD, the International Airport, and the Northern Beaches, this home offers both tranquillity and accessibility. For outdoor enthusiasts, nearby walking tracks lead to Stoney Creek, Glacier Rock, Lake Placid, and beyond.

Elevated, elegant, and versatile, this nature-inspired timber retreat presents a rare opportunity to secure a lifestyle of distinction in Kamerunga.

## More About this Property

Property ID	3XQJFMB
Property Type	House
Land Area	789 m2
Including	Ensuite Air Conditioning Deck Dishwasher Floorboards Built-in-Robes

**Nadine Edwards 0423 602 606**  
Director | nedwards@ljheh.com.au  
**Harriet Donnelly 0417 160 171**  
Sales Associate to Nadine Edwards | harriet@ljheh.com.au

**LJ Hooker Cairns Edge Hill (07) 4053 9999**  
81 - 83 Woodward Street, EDGE HILL QLD 4870  
cairnsedgehill.ljhooker.com.au | cairnsedgehill@ljheh.com.au



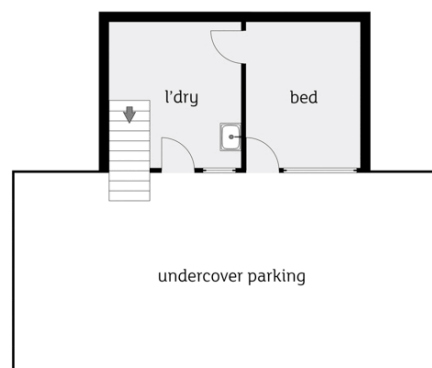
**Disclaimer:** All information contained therein is gathered from relevant third parties sources. We cannot guarantee or give any warranty about the information provided. Interested parties must rely solely on their own enquiries.

**LJ Hooker Cairns Edge Hill**  
**(07) 4053 9999**

## Upstairs.



## Downstairs.



Whilst LJ Hooker Cairns Edge Hill has made every effort to ensure the accuracy of the floorplan contained here, measurements are approximate and no responsibility is taken for any error, omission or mis-statement. This plan is for illustration purposes only.