



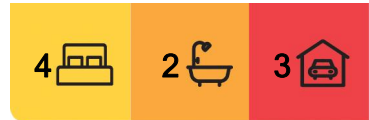
## Kallangur, 4 Emperor Court

Perfect Family Home!

Nestled in the heart of Kallangur, 4 Emperor Court presents a splendid opportunity for all buyers to secure a substantial family abode set on an expansive 817 square metre plot. This delightful property exudes a warm and welcoming ambience, perfectly designed to accommodate the modern family's needs.

Boasting four generously sized bedrooms, this residence ensures ample space for everyone. The master suite, complete with an en-suite, provides a private retreat for the heads of the household, while the remaining bedrooms are well-appointed to cater to children and guests alike. Two well-maintained bathrooms offer convenience and comfort for the bustling family life.

The heart of the home is undoubtedly its spacious living area, which seamlessly integrates with the dining space, creating an open and inclusive environment for family gatherings and entertainment. The kitchen, equipped with all the necessary amenities, overlooks this



**For Sale**  
For Sale

**View**  
By Appointment

**Contact**  
**Danny Mailer**  
0439 710 862  
danny@ljhookerredcliffe.com.au  
**Ellen Sommerlad**  
0401 545 155  
esommerlad.redcliffe@ljh.com.au



**LJ Hooker Redcliffe**  
**(07) 3897 5000**

**Disclaimer:** All information contained therein is gathered from relevant third parties sources. We cannot guarantee or give any warranty about the information provided. Interested parties must rely solely on their own enquiries.

communal space, keeping you connected with loved ones during meal preparations.

Outdoors, the substantial garden provides an excellent canvas for those with green fingers to create their own oasis or a safe haven for children to play and explore. With three parking spaces, there's ample room for the family fleet and visiting guests.

The property's prime location is a stone's throw away from local schools and a plethora of shops, ensuring all the essentials are within easy reach. Whether you're a growing family, a savvy investor, or a couple looking to settle down, 4 Emperor Court offers the perfect blend of convenience, comfort, and potential. Don't miss the chance to make this house your home.

## More About this Property

<b>Property ID</b>	208GGWZ
<b>Property Type</b>	House
<b>Land Area</b>	817 m2

### Danny Mailer 0439 710 862

Principal | [danny@ljhookerredcliffe.com.au](mailto:danny@ljhookerredcliffe.com.au)

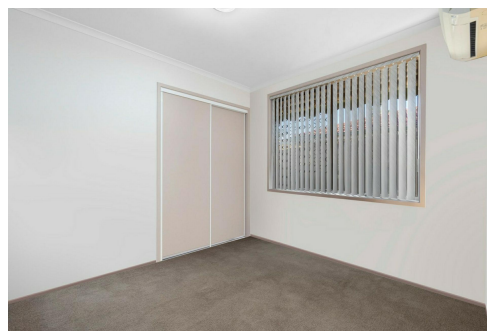
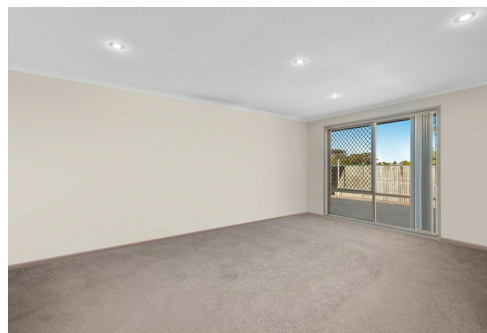
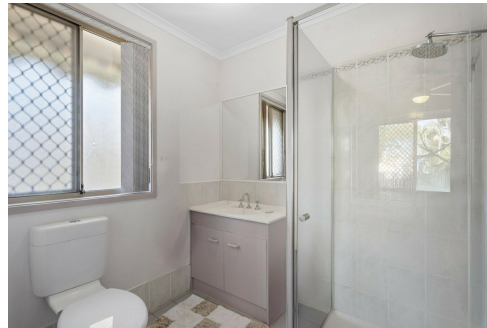
### Ellen Sommerlad 0401 545 155

| [esommerlad.redcliffe@ljh.com.au](mailto:esommerlad.redcliffe@ljh.com.au)

### LJ Hooker Redcliffe (07) 3897 5000

45 Redcliffe Parade, REDCLIFFE QLD 4020

[redcliffe.ljhooker.com.au](http://redcliffe.ljhooker.com.au) | [reception@ljhookerredcliffe.com.au](mailto:reception@ljhookerredcliffe.com.au)



**LJ Hooker Redcliffe**  
**(07) 3897 5000**

**Disclaimer:** All information contained therein is gathered from relevant third parties sources. We cannot guarantee or give any warranty about the information provided. Interested parties must rely solely on their own enquiries.



4 Emperor Court KALLANGUR

4 | 2 | 3 | 265m<sup>2</sup>



All dimensions are approximate; they are subject to errors and inaccuracies and no liability will be accepted. Plans are shown for marketing purposes only.



**LJ Hooker Redcliffe**  
**(07) 3897 5000**

**Disclaimer:** All information contained therein is gathered from relevant third parties sources. We cannot guarantee or give any warranty about the information provided. Interested parties must rely solely on their own enquiries.