



## Kallangur, 32 Glenmore Street

Another Quality Property SOLD OFF MARKET!

Another Quality Property SOLD OFF MARKET!

Proudly Sold by Liam Booker Mob: 0403 340 201

Disclaimer:

"Information contained on any marketing material, website or other portal should not be relied upon. You should make your own enquiries and seek your own independent advice with respect to any property advertised or the information about the property."

"LJ Hooker Property Connections also offer a property management service. If you're considering renting your property, are looking to buy or would like a free review of your current portfolio, please call our main office on (07) 32044666."



**For Sale**  
For Sale

**View**  
[ljhooker.com.au/0](http://ljhooker.com.au/0)

**Contact**  
**Liam Booker**  
0403 340 246  
[lbooker@ljh-kallangur.com.au](mailto:lbooker@ljh-kallangur.com.au)



**Disclaimer:** All information contained therein is gathered from relevant third parties sources. We cannot guarantee or give any warranty about the information provided. Interested parties must rely solely on their own enquiries.

**LJ Hooker Kallangur | Murrumba Downs**  
**(07) 3204 4666**

## More About this Property

<b>Property ID</b>	0
<b>Property Type</b>	House
<b>Land Area</b>	615 m2

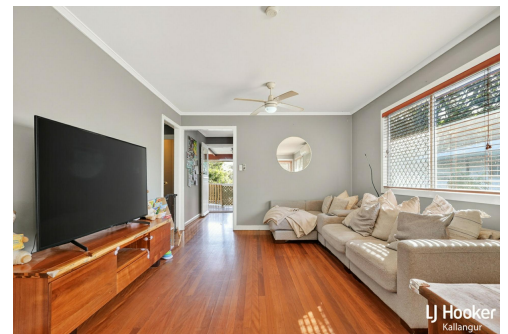
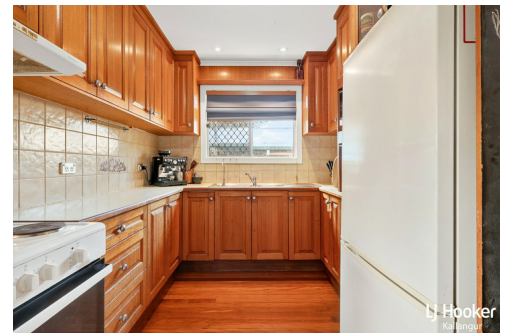
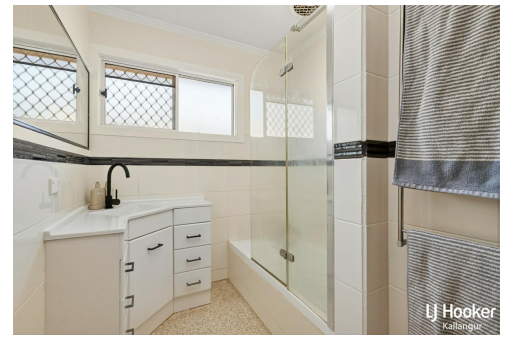
**Liam Booker 0403 340 246**

Salesperson | [lbooker@ljh-kallangur.com.au](mailto:lbooker@ljh-kallangur.com.au)

**LJ Hooker Kallangur | Murrumba Downs (07) 3204 4666**

1427 Anzac Avenue, KALLANGUR QLD 4503

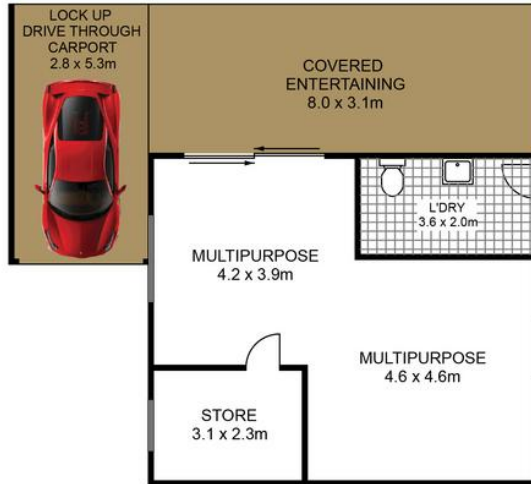
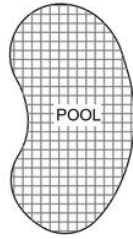
[kallangurmurrumbadowns.ljhooker.com.au](http://kallangurmurrumbadowns.ljhooker.com.au) | [LJHooker@LJH-Kallangur.com.au](mailto:LJHooker@LJH-Kallangur.com.au)



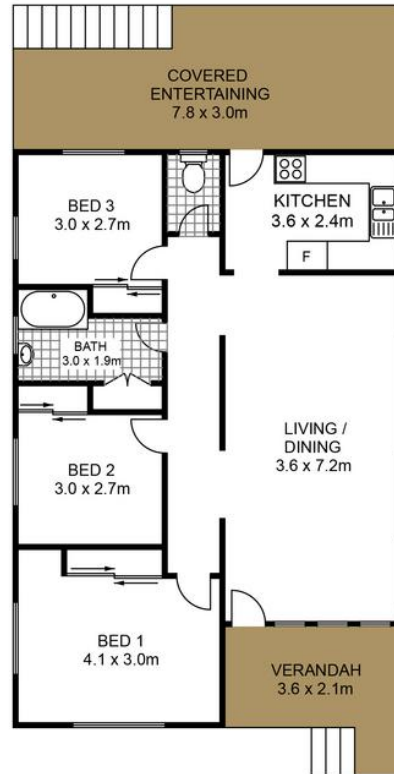
**Disclaimer:** All information contained therein is gathered from relevant third parties sources.

We cannot guarantee or give any warranty about the information provided. Interested parties must rely solely on their own enquiries.

**LJ Hooker Kallangur | Murrumba Downs (07) 3204 4666**



LOWER LEVEL



UPPER LEVEL

INTERNAL LIVING AREA: 138sqm  
EXTERNAL LIVING AREA: 78sqm  
TOTAL LIVING AREA: 216sqm