



10 Penson Court, Kallangur

## RENOVATED FAMILY HOME ON A SPACIOUS 665m<sup>2</sup> BLOCK IN A QUIET CUL-DE-SAC


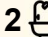
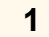
Positioned in a peaceful cul-de-sac, this beautifully renovated three-bedroom family home presents an outstanding opportunity for first home buyers, families and investors alike. Combining modern updates with a functional layout, this move-in-ready home offers comfortable living on a generous 665m<sup>2</sup> block with plenty of space both inside and out.

Designed for effortless everyday living, the home features a light-filled open plan living and dining area that seamlessly connects to the covered outdoor entertaining space, creating the perfect setting for hosting family and friends. With spacious bedrooms, quality finishes and a large backyard, this property delivers the ideal balance of comfort, convenience and lifestyle.

### Key Features:

- Recently renovated throughout
- Open plan living and dining area
- Spacious kitchen overlooking the living area
- Air conditioning

All information contained therein is gathered from relevant third parties sources. We cannot guarantee or give any warranty about the information provided. Interested parties must rely solely on their own enquiries.

3  2  1 

### FOR SALE

For Sale

### VIEW

Sat 11th Jul @ 12:30PM - 1:00PM

### AGENTS

Chris Pascoe  
0447 340 201  
cpascoe@ljh-kallangur.com.au

Paige Killen  
0447 734 206  
pkillen@ljh-kallangur.com.au

### AGENCY

LJ Hooker Kallangur | Murrumba Downs  
(07) 3204 4666



- Ceiling fans throughout
- Three spacious bedrooms with built-in wardrobes
- Main bedroom complete with ensuite
- Separate laundry
- Covered outdoor entertaining area
- Large backyard
- Single lock-up garage with remote
- Generous 665m2 block
- Quiet cul-de-sac location

Perfectly positioned in the heart of Kallangur, this home offers exceptional convenience with schools, childcare facilities, shopping centres, public transport, parklands and medical facilities all just moments away. With easy access to the Bruce Highway and only a short drive to North Lakes, Westfield, the University of the Sunshine Coast Moreton Bay campus and the Petrie train station, this is a fantastic opportunity to secure a quality home in a highly sought-after location.

## MORE DETAILS

Property ID	28K5F39
Property Type	House
Land Area	665 m2
Including	Ensuite Toilets (2) Secure Parking Fully Fenced Recently renovated

### Chris Pascoe 0447 340 201

Salesperson | [cpascoe@ljh-kallangur.com.au](mailto:cpascoe@ljh-kallangur.com.au)

### Paige Killen 0447 734 206

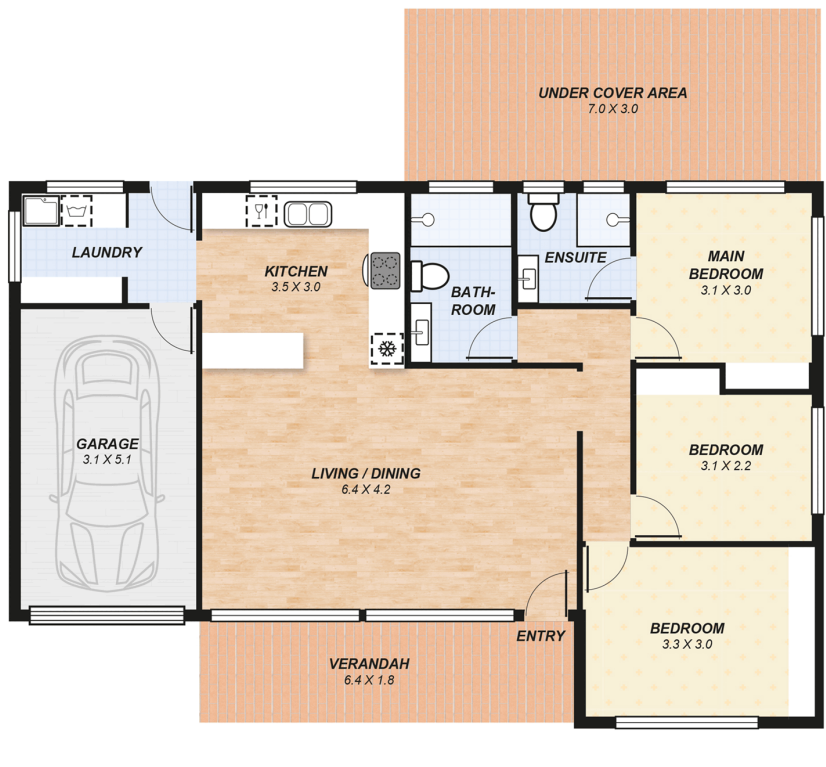
Salesperson | [pkillen@ljh-kallangur.com.au](mailto:pkillen@ljh-kallangur.com.au)

### LJ Hooker Kallangur | Murrumba Downs (07) 3204 4666

1427 Anzac Avenue, KALLANGUR QLD 4503

[kallangurmurrumbadowns.ljhooker.com.au](http://kallangurmurrumbadowns.ljhooker.com.au) | [LJHooker@LJH-Kallangur.com.au](mailto:LJHooker@LJH-Kallangur.com.au)





Area	m <sup>2</sup>
Living	89
Under cover & V'dah	33
Garage	16
Total area (approx): 138m <sup>2</sup>	
Land:	666m <sup>2</sup>

**DISCLAIMER:** This drawing is for illustration purposes only. All measurements are approximate and details intended to be relied upon should be independently verified.