



2/82 Diamantina Crescent, Kaleen

Beautifully Renovated, Single-Level Living in the Heart of Kaleen

Perfectly positioned on sought-after Diamantina Crescent, this beautifully renovated single-level home delivers effortless living, modern comfort, and unbeatable convenience. With every inch refreshed from top to bottom, there is nothing left to do but move in and enjoy.

Downsizers, first-home buyers, small families, and investors will all appreciate the thoughtful upgrades, abundant natural light, and low-maintenance lifestyle this home offers.

Property Features

- Stunning full renovation - all new fittings, fixtures, flooring, and finishes
- Custom kitchen with large pantry and integrated dishwasher
- Bright open-plan living and dining with new flooring
- Two spacious, sunny bedrooms with floor-to-ceiling windows and built-in robes
- Brand-new bathroom with integrated laundry facilities
- New carpets in both bedrooms

2 1 1

FOR SALE
\$630,000

AGENTS

Robert Murphy
0414 734 185
rmurphy@ljhbelconnen.com.au

James Vlandis
0488 484 814
jvlandis@ljhbelconnen.com.au

AGENCY

LJ Hooker Belconnen
(02) 6251 1477

All information contained therein is gathered from relevant third parties sources. We cannot guarantee or give any warranty about the information provided. Interested parties must rely solely on their own enquiries.

LJ Hooker

- Reverse cycle heating/cooling
- Beautifully landscaped, low-maintenance yard
- Secure rear yard - ideal for pets
- Separate title - no strata or body corporate fees
- Single level - easy access, perfect for downsizers
- Plenty of storage throughout

Location - Why Diamantina Crescent, Kaleen Is So Popular

- Opposite expansive playing fields - open space right at your doorstep
- Easy walk to local shops, cafes, and services
- Close to Kaleen Primary School, St Michael's Primary, and Kaleen High School
- Quick access to Belconnen, Gungahlin, Dickson, and the City
- Peaceful, established neighbourhood with a strong community feel

Key Details

Build: 1998

Land Size: 200sqm

Living Size: 71sqm

EER: 2.0

Rates: \$1,241.38 p.a.

Land Tax: \$1,719.53 p.a. (investors only)

UV: \$192,000

Disclaimer:

All information contained herein is gathered from external sources we consider to be reliable. However, we cannot guarantee or give any warranty about the information provided. Interested parties must solely rely on their own enquiries and satisfy themselves in all respects.

MORE DETAILS

Property ID	HP0QTF8H
Property Type	House
House Size	71 m2
Land Area	200 m2
EER	2
Including	Air Conditioning Courtyard Dishwasher Built-in-Robes

Robert Murphy 0414 734 185

Sales Agent | rmurphy@ljhbelconnen.com.au

James Vlandis 0488 484 814

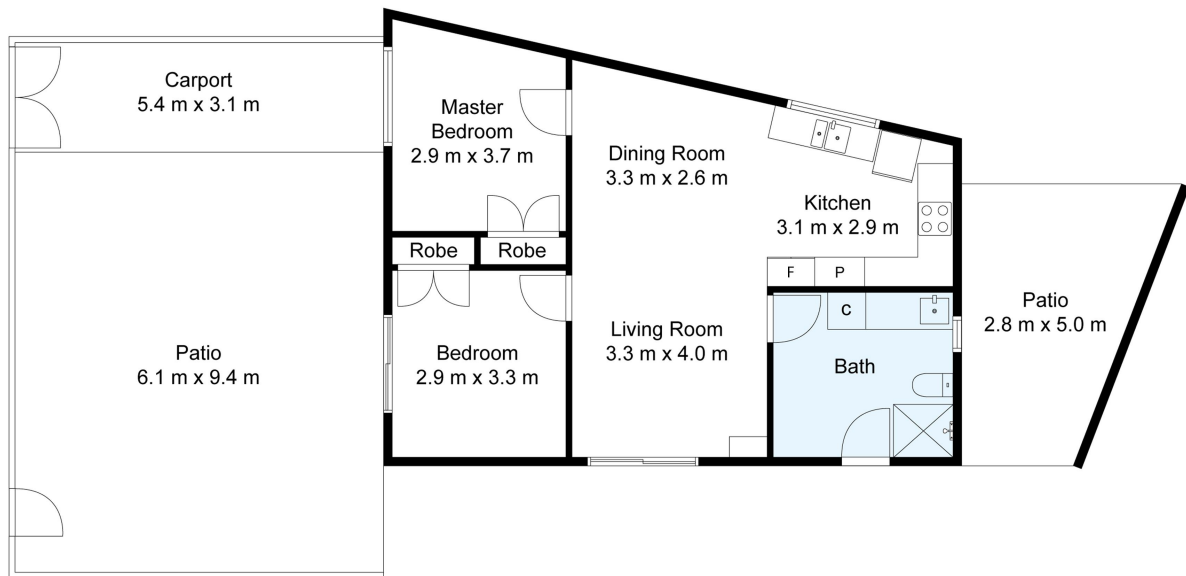
Sales Agent | jvlandis@ljhbelconnen.com.au

LJ Hooker Belconnen (02) 6251 1477

Shop 9, 21 Benjamin Way, BELCONNEN ACT 2617

belconnen.ljhooker.com.au | belconnen@ljhbelconnen.com.au





2/82 Diamantina Crescent, Kaleen



Disclaimer: Plans are indicative only and should be checked by the prospective purchaser. Plans shown are for presentation purposes and are not part of any legal document. All measurements and figures are approximate. The information herein is gathered from sources we believe to be reliable.