



LJ Hooker  
Bega



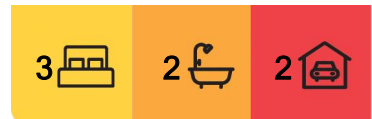
## Kalaru, 54 Emerald Crescent

### NATURE LOVERS

This character-filled residence nestled on 1.25 acres adjoining the Bournda National Park offers a distinctive 3-bedroom mud brick home with a unique living experience, blending natural charm with modern conveniences.

The home is designed with two wings. The main wing features the master bedroom and an open-plan living area with a breezeway connecting this to the second wing, which houses the second and third bedrooms, a bathroom, and a lounge room. This layout provides privacy and space for all family members or guests.

Surrounding the home is a stunning natural setting, rich with native flora and fauna, offering a serene backdrop and a direct connection to nature. Proximity to the rivers, lakes, and estuaries of the Sapphire Coast ensures endless opportunities for outdoor activities and exploration.



**For Sale**  
\$830,000

**View**  
[ljhooker.com.au/NCBFGN](http://ljhooker.com.au/NCBFGN)

**Contact**  
**Paul Griffin**  
0400 024 300  
[pgriffin@ljhbega.com.au](mailto:pgriffin@ljhbega.com.au)



**LJ Hooker Bega**  
**(02) 6492 4300**

**Disclaimer:** All information contained therein is gathered from relevant third parties sources. We cannot guarantee or give any warranty about the information provided. Interested parties must rely solely on their own enquiries.

Practical features include a two-car carport/garage, town water, and mains power.

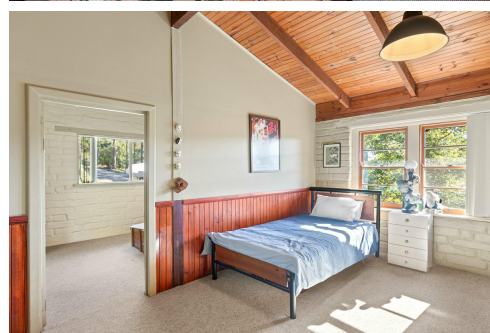
This property is a rare find, offering both tranquillity and convenience. Don't miss the chance to make 54 Emerald Crescent your new home. Contact us today to schedule a viewing.

## More About this Property

<b>Property ID</b>	NCBFGN
<b>Property Type</b>	House
<b>Land Area</b>	4980 m2

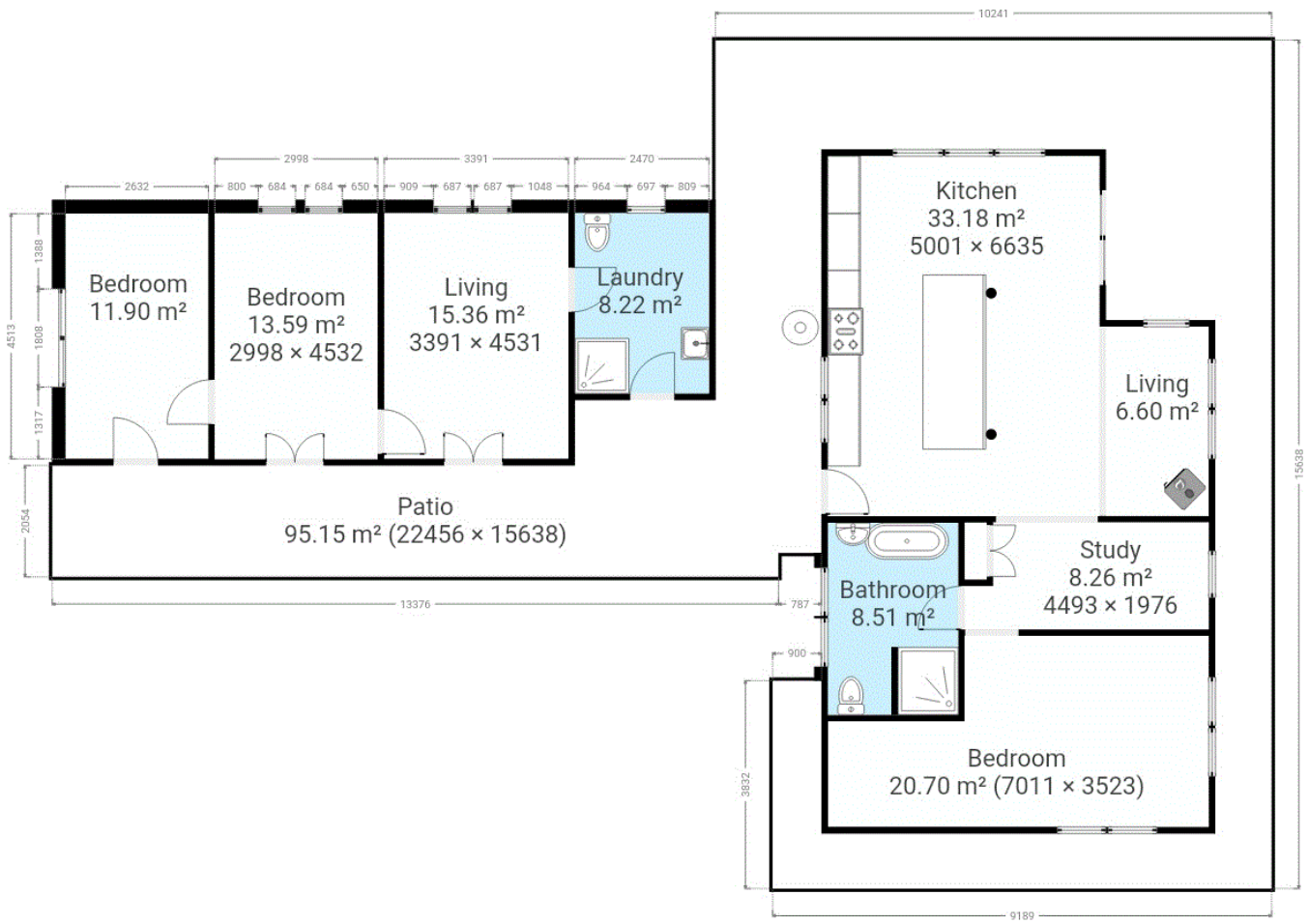
**Paul Griffin 0400 024 300**  
Licensee & Principal | pgriffin@ljhbega.com.au

**LJ Hooker Bega (02) 6492 4300**  
225 Carp Street, BEGA NSW 2550  
bega.ljhooker.com.au | office@ljhbega.com.au



**Disclaimer:** All information contained therein is gathered from relevant third parties sources. We cannot guarantee or give any warranty about the information provided. Interested parties must rely solely on their own enquiries.

**LJ Hooker Bega**  
**(02) 6492 4300**



This plan is intended for marketing purposes only. All dimensions are approximate.