



163 Turingal Head Road, Kalaru

STUNNING HOME WITH VIEWS DOWN THE COAST

Nestled in a peaceful coastal setting, 163 Turingal Head Road in Wallagoot offers a rare opportunity to secure a fully insulated, steel-framed residence set over two spacious levels on an acre and a quarter of land. Designed to capture stunning water views, this thoughtfully crafted home combines comfort, quality and space in a sought-after location.

The ground floor features the master bedroom complete with its own ensuite, providing ease of living and privacy. As you move through the home, beautiful custom jarrah doors and windows frame the landscape and invite natural light throughout. A wood fire adds warmth and charm for cooler evenings, complemented by town water supply for convenience.

Upstairs, two generous bedrooms with built-in robes are accompanied by a dedicated study and an expansive media room, offering flexibility for family living, working from home or hosting guests. Surrounding the upper level is a wrap-around balcony where you can relax and soak in the captivating water views.

Outside, the property continues to impress with a 9 x 7 metre three-

3 2 3

FOR SALE
\$1,195,000 - Motivated Seller

VIEW
By Appointment

AGENTS
Tim Shinnick
0466 475 131
tshinnick@ljhbega.com.au

AGENCY
LJ Hooker Bega
(02) 6492 4300

All information contained therein is gathered from relevant third parties sources.
We cannot guarantee or give any warranty about the information provided.
Interested parties must rely solely on their own enquiries.

LJ Hooker

bay shed, ideal for workshop space or storage, and a 9 x 6 metre carport perfect for housing a boat, caravan or additional vehicles. With ample land, serene surroundings and quality construction throughout, this property delivers an exceptional lifestyle opportunity in a picturesque coastal pocket of Wallagoot.

MORE DETAILS

Property ID	NYRFGN
Property Type	House
Land Area	5005 m2

Tim Shinnick 0466 475 131

Licensed Real Estate Agent | tshinnick@ljhbega.com.au

LJ Hooker Bega (02) 6492 4300

225 Carp Street, BEGA NSW 2550

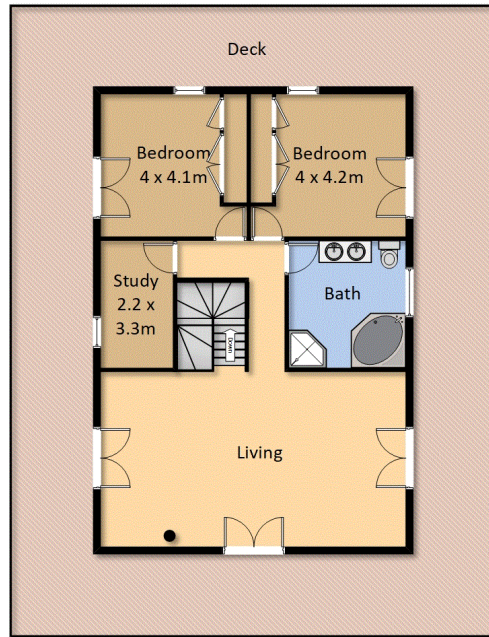
bega.ljhooker.com.au | office@ljhbega.com.au



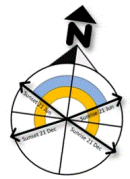
Ground Level



Upper Level



Shed



163 Turingal Head Rd, Wallagoot

Measurements are approximate and should be used as a guide only.