



**Sold**



57 Strathmore Crescent, Kalaru

## CHARMING MUDBRICK HOME, GREAT LOCATION!

Nestled on over 5,200sqm, this stunning property offers a private and tranquil environment that exudes beauty and charm. The mud-brick construction not only showcases character but also ensures year-round comfort, a hallmark of these unique homes. This residence stands out with its expansive open spaces, featuring four generous bedrooms, two bathrooms, two inviting living areas, a dining space, and a spacious kitchen, all complemented by solar power and solar hot water systems-making it more than just another mud-brick house.

The main bedroom is truly impressive, boasting polished timber floors, a double built-in wardrobe, and a full ensuite. This sanctuary also benefits from picturesque views overlooking the manicured lawns and lush gardens. The additional bedrooms are equally spacious, conveniently located near the main bathroom, and each offers delightful views of the gardens.

With two large living zones, this home is perfect for families needing space or for entertaining friends. Climate control is well taken care of with a cozy wood-fire heater, reverse cycle air conditioning, and ceiling fans throughout.

4 2 2

**FOR SALE**  
\$1,075,000

**AGENTS**

Stuart Cook  
0418 525 192  
scook@ljhbega.com.au

**AGENCY**

LJ Hooker Bega  
(02) 6492 4300

All information contained therein is gathered from relevant third parties sources. We cannot guarantee or give any warranty about the information provided. Interested parties must rely solely on their own enquiries.



The central timber kitchen is a highlight, featuring ample bench space and storage, making it ideal for family meals and entertaining guests.

Step outside to enjoy beautifully landscaped gardens that create the perfect backdrop for outdoor dining, watching children play on the expansive lawn, or simply finding a quiet corner to unwind and relax.

For those with multiple vehicles or trailers, the property includes a spacious double carport with a high roofline and an impressive 9m x 9m shed, providing ample storage and versatility.

Kalaru is a wonderfully located community, offering easy access to Tathra Beach, accessible via a bike path - along with the conveniences of Bega and Merimbula, including the local airport.

For more information or to arrange a viewing of this incredible property, contact Stuart Cook at 0418 525 192 or the team at LJ Hooker - Bega at (02) 6492 4300.

## MORE DETAILS

Property ID	NXUFGN
Property Type	AcreageSemi-rural
Land Area	1.29 acre

**Stuart Cook 0418 525 192**

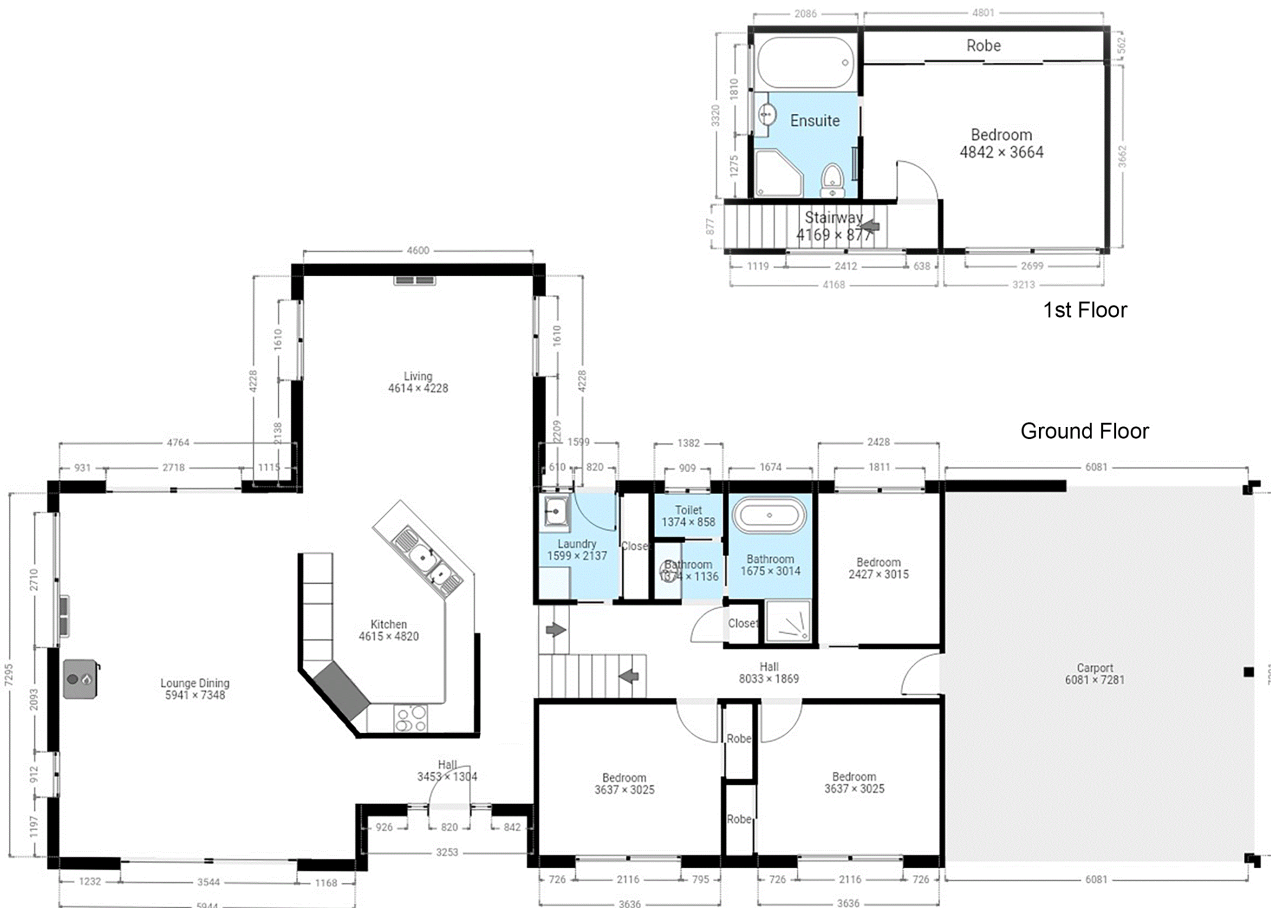
Principal | [scook@ljhbega.com.au](mailto:scook@ljhbega.com.au)

**LJ Hooker Bega (02) 6492 4300**

225 Carp Street, BEGA NSW 2550

[bega.ljhooker.com.au](http://bega.ljhooker.com.au) | [office@ljhbega.com.au](mailto:office@ljhbega.com.au)





1st Floor

Ground Floor



This plan is intended for marketing purposes only. All dimensions are approximate.

57 Strathmore Cres Kalaru

All information contained therein is gathered from relevant third parties sources. We cannot guarantee or give any warranty about the information provided. Interested parties must rely solely on their own enquiries.

