



Kaiwaka, 364 Oneriri Road

Your Private Oasis

A private 2Ha property with views over the Rapere Inlet and beyond. This character home has exposed beams, solid timber floorboards, brick work, stained glass windows and timber kitchen with Coal Range. A large wood burner from Finland in the lounge also has an oven to cook food. The sunroom is just stunning, soaking up the magic of the gardens and a covered patio areas enjoy views of the Rapere inlet.

Consisting of three levels, staying on the main floor there are two bedrooms both have access to decks, the master bedroom has water views, there's separate toilet and bathroom and a large walk-in wardrobe. A staircase leads down to the double garage, laundry and storage cellar, there's a solar hot water system. On this level of the home there is also a 50m² two bedroom self-contained flat with its own separate access and parking. Back to the ground floor and upstairs there are two large bedrooms and an open plan living area with kitchenette and bathroom, there are views of the gardens.

6 

3 

4 

For Sale

By Negotiation

View

By Appointment

Contact

Craig Kenyon

027 485 6833

craig.kenyon@ljhooker.co.nz

The gardens are an oasis with feature waterfall, there are three ponds one is covered in water lily's with a bridge across to an island. Many varieties of fruit trees, raised vegetable gardens, a rustic glasshouse and with fresh fish is mere hop skip and a jump away are the makings of this self-sufficient lifestyle. Located within the Otamatea Eco Village on a peninsula which borders the Kaipara Harbour and with a share of 72Ha this is paradise.

For an appointment to view this unique property call Craig 0274856833

More About this Property

Property ID	F7PHAY
Property Type	Lifestyle
House Size	300 m ²
Land Area	2 hectare
Licensed Real Estate Agents (REAA2008)	

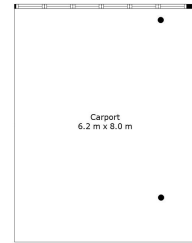
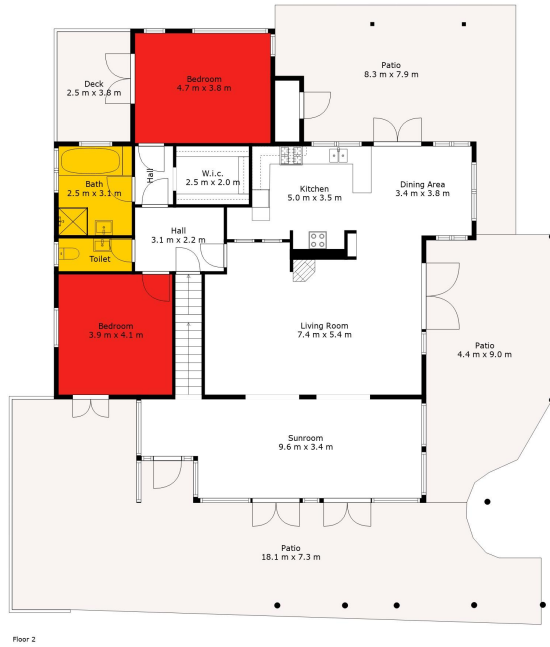
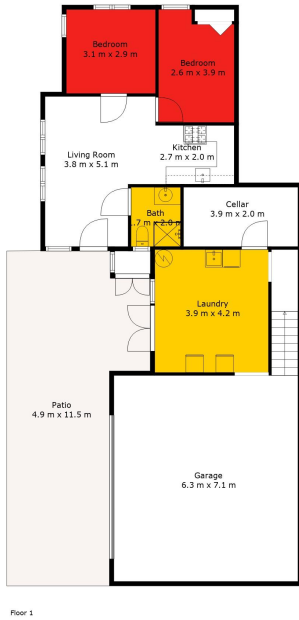
Craig Kenyon 027 485 6833
Salesperson | craig.kenyon@ljhooker.co.nz

LJ Hooker Warkworth (09) 425 8589
Tulp & Co Limited
20 Queen Street, WARKWORTH NZ
warkworth.ljhooker.co.nz | tulpandco@ljhooker.co.nz



Disclaimer: All information contained therein is gathered from relevant third parties sources. We cannot guarantee or give any warranty about the information provided. Interested parties must rely solely on their own enquiries.

LJ Hooker Warkworth
(09) 425 8589
Tulp & Co Limited



Sizes & Dimensions Are Approximate. Actual May Vary.



LJ Hooker Warkworth
(09) 425 8589
 Tulp & Co Limited

Disclaimer: All information contained therein is gathered from relevant third parties sources. We cannot guarantee or give any warranty about the information provided. Interested parties must rely solely on their own enquiries.