



Junction Village, 28 Houlder Avenue

Charming & Immaculate with Large Rumpus Room!

This immaculate family home or investment with an abundance of space is a fantastic opportunity in a sought after area where very few properties come to market...

Conveniently located within close proximity of Cranbourne Park and Botanic Ridge Village Shopping Centres, Royal Botanic Gardens, Racecourse, Reserves, Playgrounds and so much more!

From the moment you walk in you will be impressed with how well maintained this home is, starting off with a generous formal lounge room which flows through to the kitchen with plenty of cupboard space, tiled splash back and dishwasher overlooking the meals area. Comprising of three bedrooms with built-in robes, all central to the main bathroom and separate toilet. Make your way through to the large rumpus room with bar, a huge addition to extra living space or a great place to entertain in with slide door access directly to outdoors.



For Sale
\$630,000 - \$670,000

View
ljhooker.com.au/47XCKFHE

Contact
Aren Aliu
0403 613 988
aren.aliu@ljhcasey.com.au

John Deo
0411 873 123
john.deo@ljhcasey.com.au



LJ Hooker Hampton Park
(03) 9702 8388

Disclaimer: All information contained therein is gathered from relevant third parties sources. We cannot guarantee or give any warranty about the information provided. Interested parties must rely solely on their own enquiries.

Further comforts include a split system, solar panels, an oversized single carport with remote front roller door plus drive through access to another single carport and multiple car spaces, a couple of pergola areas perfect for unwinding amongst the large backyard space with plenty of room for the kids to run around in which includes a garden shed, chicken coop and beautifully manicured gardens.

All this on 613m2 of flat, rectangular land with so much potential. Get in quick before it's too late!

Disclaimer: All information contained herein is gathered from sources we consider to be reliable. However, we cannot guarantee or give any warranty about the information provided, and interested parties must solely rely on their own enquiries.

More About this Property

Property ID	47XCKFHE
Property Type	House
Land Area	613 m2
Including	Solar Panels Close to Shops Close to Transport

Aren Aliu 0403 613 988

Sales Manager / Auctioneer / Licensed Estate Agent | aren.aliu@ljhcasey.com.au

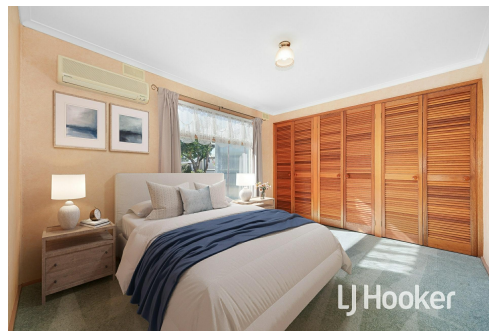
John Deo 0411 873 123

Director - Officer In Effective Control | john.deo@ljhcasey.com.au

LJ Hooker Hampton Park (03) 9702 8388

Shop 20, Hampton Park Shopping Centre, 166 Somerville Road, HAMPTON PARK VIC 3976

hamptonpark.ljhooker.com.au | john.deo@ljhcasey.com.au

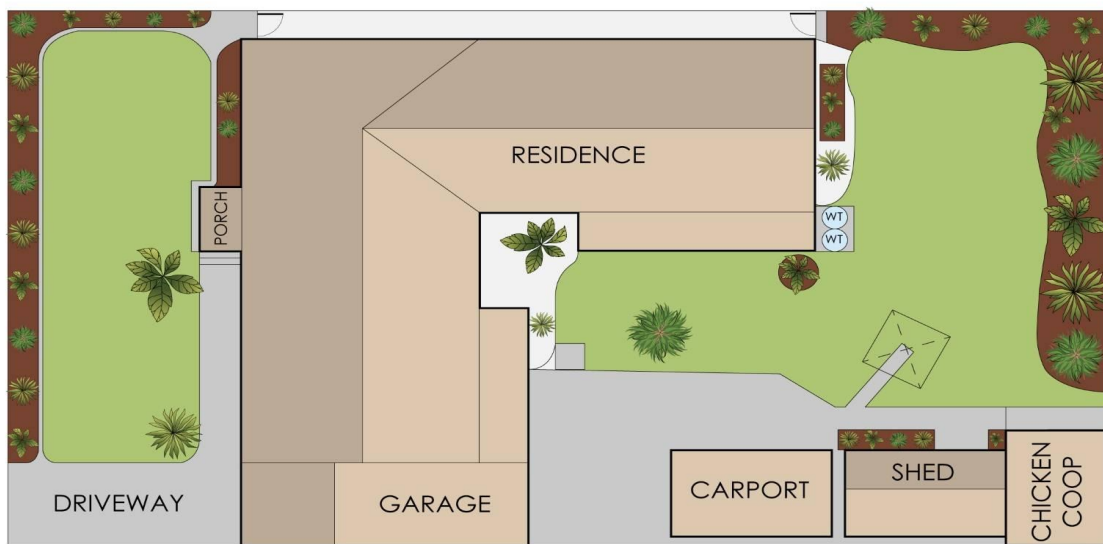


LJ Hooker Hampton Park
(03) 9702 8388

Disclaimer: All information contained therein is gathered from relevant third parties sources. We cannot guarantee or give any warranty about the information provided. Interested parties must rely solely on their own enquiries.



(Not In Position)



28 Houlder Avenue, Junction Village

This floorplan is for illustration purposes only and no warranty is given to its accuracy. Purchasers are advised to carry out their own investigations.