



Julatten, Lot 2/1651 Mossman Mt Molloy Road

COSY COMFORTABLE COUNTRY RETREAT

Nestled amongst the trees at the end of a meandering driveway, you'll discover this cosy, perfectly private country retreat.

Residing on approximately 6 acres of gently sloping, predominantly vegetated land, this feature packed property comprises:

- 3 bedrooms all with lovely outlooks
- Separate office again with outlook
- Expansive 14 x 7 metre covered patio
- Elevated pool area with endless views
- Large 16 x 6 metre powered shed with firewood store
- Bore and water tanks
- Goat enclosure



Disclaimer: All information contained therein is gathered from relevant third parties sources. We cannot guarantee or give any warranty about the information provided. Interested parties must rely solely on their own enquiries.



For Sale
Please Call

View
ljhooker.com.au/134EF4A

Contact
Shane Wight
0409 417 316
swight.portdouglas@ljhooker.com.au

LJ Hooker Port Douglas
(07) 4099 4099

- Chicken coop
- Established lawns and gardens around the house

The wide covered patio provides for a shady, all weather entrance into the home whose attractive sandstone flooring immediately captures your attention.

A cosy, crackling log fire combines with dual ceiling fans to create optimum comfort in the open plan lounge, dining and kitchen space that boasts beautiful natural outlooks from each of the large picture windows and doors.

The feature backsplash tiling in the kitchen provides a warming pop of colour and perfectly offsets both the crisp white cabinetry and contrasting countertops that surround the recessed oven and gas cooktop.

The rear of the home is dedicated to the three good sized bedrooms, all of which feature hybrid flooring, ceiling fans and those views. Two of the three also offer built in wardrobes. A large shower bathroom services the bedrooms while the toilet is conveniently located separately, adjacent to the light, bright laundry.

And for those with work-from-home aspirations, there is also a dedicated office space with integrated desktop and a full wall of glass louvre windows.

Outside, the offering is just as impressive, no more so than the elevated pool with its custom sundeck, firepit, paved seating area, refreshing breezes and endless views across vibrant natural vegetation to the mountain ranges in the distance.

The secure, powered shed is perfect for storage, parking, or housing a workshop, while the freestanding chicken coop and fenced goat enclosure ensure both your feathered and furry friends are well catered for.

Add the alluring lawns, gardens and vegetable plot and the appeal of this picture becomes even more apparent.

Highly Motivated Sellers so don't miss out on this opportunity.

Renowned for its pleasant temperate climate, Julatten is a popular lifestyle destination. For further information or to request an inspection, contact Shane on 0409 417 316 or swight.portdouglas@ljhooker.com.au



LJ Hooker Port Douglas
(07) 4099 4099

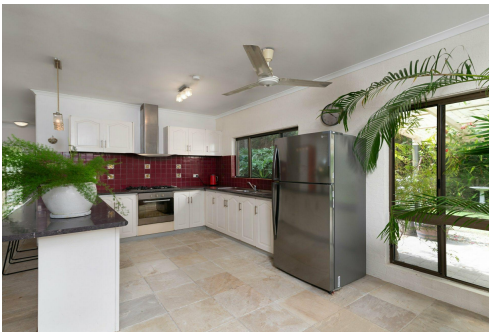
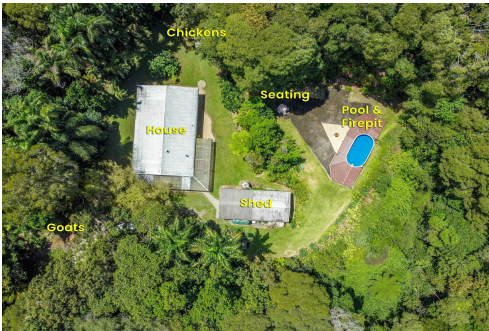
Disclaimer: All information contained therein is gathered from relevant third parties sources. We cannot guarantee or give any warranty about the information provided. Interested parties must rely solely on their own enquiries.

More About this Property

Property ID	134EF4A
Property Type	AcreageSemi-rural
Land Area	6 acre
Including	Study Toilets (1) Pool Fire Place Deck Outdoor Entertaining Built-in-Robes Water Tank Ceiling Fans Modern Bathroom & Kitchen Bore

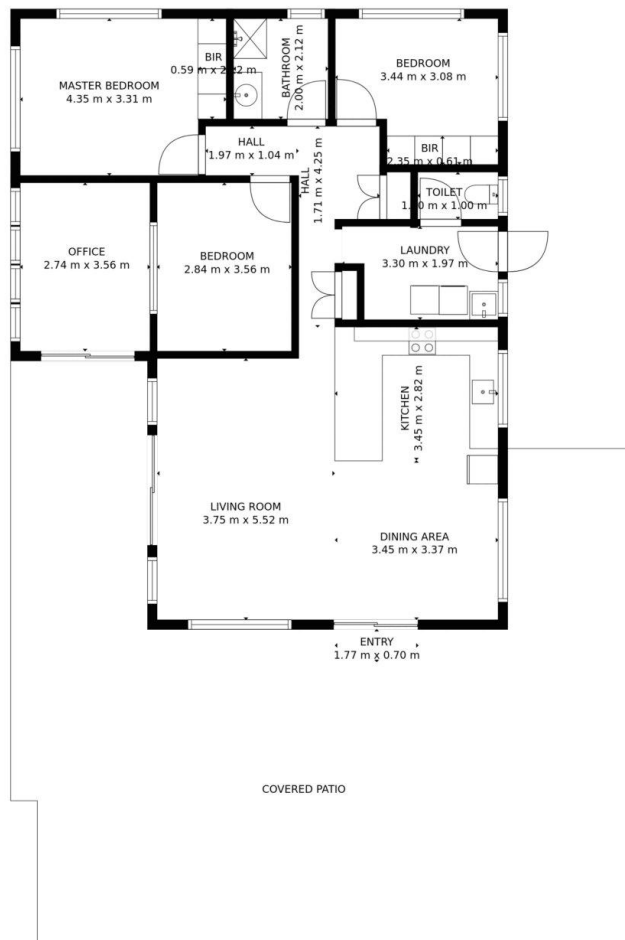
Shane Wight 0409 417 316
Property Sales and Licensed Auctioneer | swight.portdouglas@ljhooker.com.au

LJ Hooker Port Douglas (07) 4099 4099
Shop 3/31 Macrossan Street, PORT DOUGLAS QLD 4877
portdouglas.ljhooker.com.au | portdouglas@ljhooker.com.au



Disclaimer: All information contained therein is gathered from relevant third parties sources.
We cannot guarantee or give any warranty about the information provided. Interested parties must rely solely on their own enquiries.

LJ Hooker Port Douglas
(07) 4099 4099



SIZES AND DIMENSIONS ARE APPROXIMATE, ACTUAL MAY VARY.