



1/235 Payneham Road, Joslin

Modern Living in Prime Location

This charming two bedroom home offers comfortable living with a warm and welcoming feel. Perfect for the savvy investor, down sizer or great potential first home!

Inside, this renovated home is move-in ready, with creature comforts including split system air conditioning in both bedrooms and lounge area, separate dining and laundry space for peace and quiet as well as a backyard and attached carport for easy access.




The main bedroom is a generous size featuring a ceiling fan and security shutters for extra privacy, while bedroom two has a built-in robe and a west facing window providing ample natural light. Adjacent to the bedrooms, you'll find a renovated bathroom with with space and convenience in mind.

The lounge room features a window nook perfect for a desk space, split system air conditioning unit and ceiling fan. The dining area is separated by sliding doors, leading directly to the renovated kitchen and separate laundry. Heading outside to the courtyard, you'll find a useful utility shed and space for your children and pets to play in.

What we love:

- Renovated, move-in ready home

All information contained therein is gathered from relevant third parties sources. We cannot guarantee or give any warranty about the information provided. Interested parties must rely solely on their own enquiries.

2  1  1 

FOR SALE

Please Call

AGENTS

Luke Mitchell

0411 703 055

luke.mitchell@ljhadelaidemetro.com.au

Claude Buccella

0419 394 110

claud.buccella@ljhadelaidemetro.com.au

AGENCY

LJ Hooker St Peters

(08) 8362 8008

 **LJ Hooker**

- Split system a/c in lounge and both bedrooms
- Security shutters for extra privacy
- Modern kitchen with gas cooktop
- Generous size bedrooms with built-in-robres in bedroom 2
- Walking distance to shops and public transport
- Minimal grass and garden for low maintenance living
- Attached carport for easy, everyday access

Joslin places you minutes from the Marden, Walkerville and St Peters shopping precincts, Felixstow Reserve, all with easy access via public transport. Zoned for Marryatville High and East Adelaide Primary and a short drive to St Andrew's School and St Peter's College, this is a prime address for families.

You can't be too early to enquire, but you can be too late to inspect. Contact Luke Mitchell today to learn more.

Purchasing this property as an investment? Talk with Kirsty Clark from our PM team and see why our Property Management department is #1 amongst all the LJ Hooker offices Worldwide.

- * All information provided has been obtained from sources we believe to be accurate, however, we cannot guarantee the information is accurate and we accept no liability for any errors or omissions (including but not limited to a property's land size, floor plans and size, building age and condition). Interested parties should make their own enquiries and obtain their own legal advice.

RLA 61345 RLA 282965 RLA 231015

MORE DETAILS

Property ID 2E5HFDZ
 Property Type Unit

Luke Mitchell 0411 703 055

Sales Consultant | luke.mitchell@ljhadelaidemetro.com.au

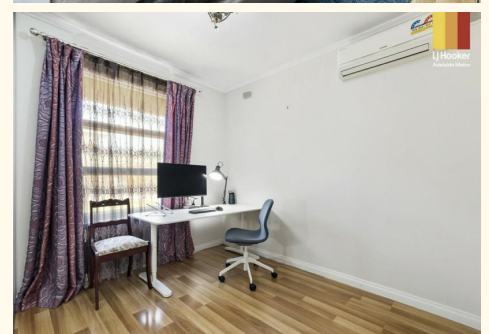
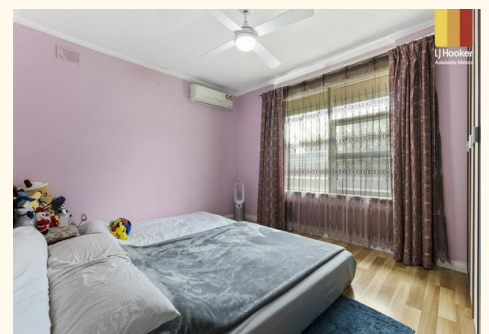
Claude Buccella 0419 394 110

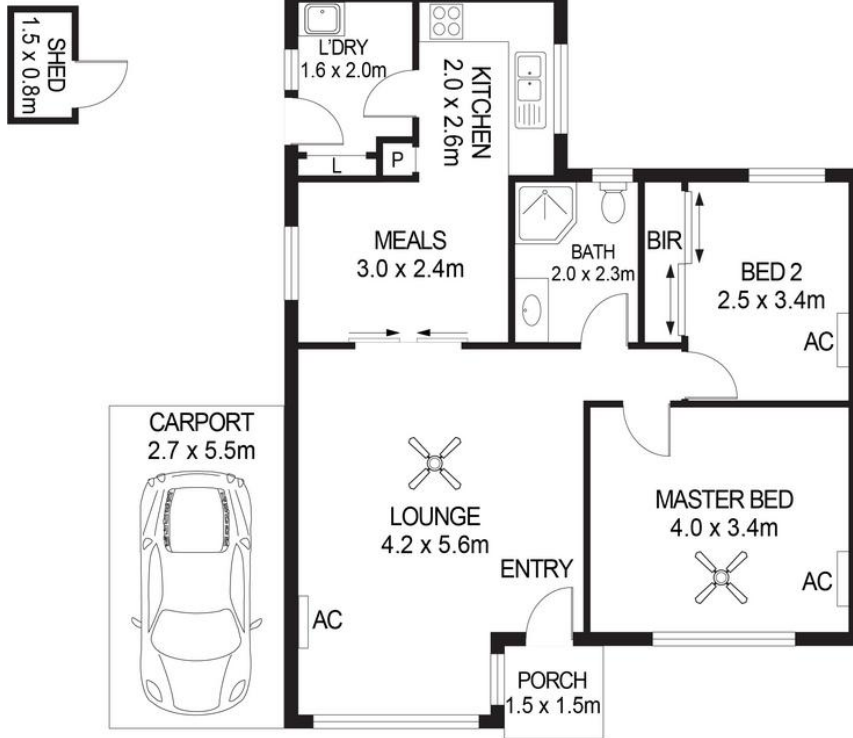
Principal | claudio.buccella@ljhadelaidemetro.com.au

LJ Hooker St Peters (08) 8362 8008

2a Portrush Road, PAYNEHAM SA 5070

stpeters.ljhooker.com.au | stpeters@ljhadelaidemetro.com.au





1/235 PAYNEHAM ROAD, JOSLIN

DISCLAIMER

PLANS SHOWN ARE FOR MARKETING PURPOSES ONLY. ALL DIMENSIONS ARE APPROXIMATE AND NOT TO SCALE. THEY ARE SUBJECT TO ERRORS AND INACCURACIES AND NO LIABILITY WILL BE ACCEPTED. INTERESTED PARTIES SHOULD MAKE THEIR OWN ENQUIRIES.



IMAGES AND FLOORPLAN BY:
IN-HOUSE
IMAGING
inhouseimaging.com.au