

Joondalup, 2/53 Davidson Terrace

CALL MATT FOR PRIVATE INSPECTION!



For Sale
UNDER OFFER

View
ljhooker.com.au/JGRHRD

Contact
Matt Hemsworth
0488 070 954
matthew.hemsworth@ljhooker.com.au

OXYGEN APARTMENTS

A stunning, modern, secure apartment complex.

Located in the absolute centre of Joondalup City above DOME Cafe on the corner of Davidson Tce & Boas Ave, enjoy the life of Joondalup - convenience of multiple cafes, restaurants, public transport, Lakeside shopping centre and Neil Hawkins Park all within easy walking distance.

Strata fees: \$873.65 /Quarter

Rental estimate: \$500 /Week

Oxygen apartments is a very attractive building, Sunlit open atrium through the middle as you walk in, elevator to every level & secure underground parking.

#2 sits on the first floor facing West, every room has been maximised!

- High ceilings throughout with downlights.



LJ Hooker Joondalup
(08) 9300 2100

Disclaimer: All information contained therein is gathered from relevant third parties sources. We cannot guarantee or give any warranty about the information provided. Interested parties must rely solely on their own enquiries.

- Large bedroom, double sliding mirror robes.
- Kitchen area big enough for dining, plenty of space for island bench.
- Bathroom doubles as laundry, glass panelled shower & storage cupboard.
- Carpeted lounge room is a great size.
- Massive balcony/alfresco.
- Gym on the same level as your apartment.
- Underground parking.

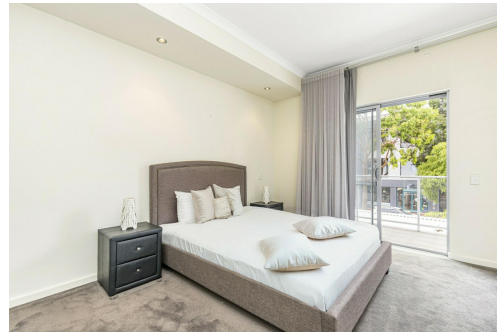
For more information, contact Matt Hemsworth.

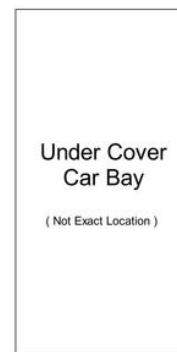
More About this Property

Property ID	JGRHRD
Property Type	Apartment
House Size	64 m ²
Including	Air Conditioning Toilets (1) Balcony Built-in-Robes Secure Parking Remote Garage Liveability

Matt Hemsworth 0488 070 954
Residential Property Sales | matthew.hemsworth@ljhooker.com.au

LJ Hooker Joondalup (08) 9300 2100
4/25 Delage Street, JOONDALUP WA 6027
joondalup.ljhooker.com.au | admin.joondalup@ljhooker.com.au





LJ Hooker 2/53 Davidson Terrace, Joondalup

/ for information and guidance purpose only /
measurements shown are approximate