

Jolimont, 9/9 Jersey Street

Fabulous Investment Opportunity!

This cracking little property has a lease in place until Nov 22nd 2025 and represents a fantastic opportunity for an astute investor or those not in a rush to move in!

Close to all amenities and only a short distance to the cafes, bars and restaurants of Subiaco and public transport.

Features:

- 2 bedrooms - main bedroom with BIRs
- Open plan living
- Ground floor
- Air con in living area

Current Rent \$540 per week

Strata fees admin \$570.30 per qtr



Disclaimer: All information contained therein is gathered from relevant third parties sources.

We cannot guarantee or give any warranty about the information provided. Interested parties must rely solely on their own enquiries.

SOLD



For Sale
From \$445,000

View
ljhooker.com.au/3S4RFGJ

Contact
Paul Hickey
0402 449 120
paul.hickey@ljhooker.com.au

Clint White
0422 960 305
clint.white@ljhooker.com.au

LJ Hooker City Residential
(08) 9325 0700

Reserve fund \$234.68 per qtr

Water rates approx. \$1,068.52 per annum

Shire rates approx. \$1,823.20 per annum

Viewings are limited due to the property being tenanted. Please attend the scheduled home opens.

More About this Property

Property ID	3S4RFGJ
Property Type	Unit
House Size	56 m2
Land Area	68 m2
Including	Air Conditioning Toilets (1) Built-in-Robes

Paul Hickey 0402 449 120

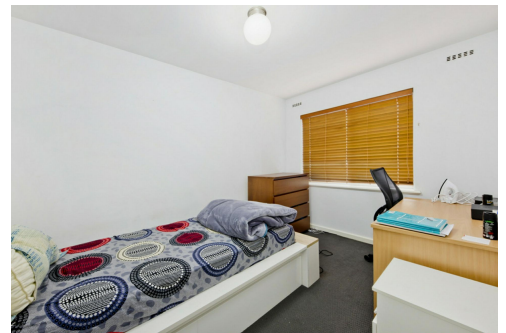
Sales Executive | paul.hickey@ljhooker.com.au

Clint White 0422 960 305

Sales Executive | clint.white@ljhooker.com.au

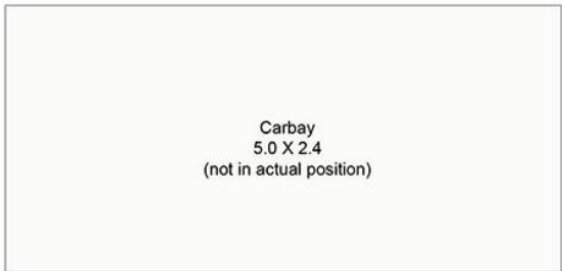
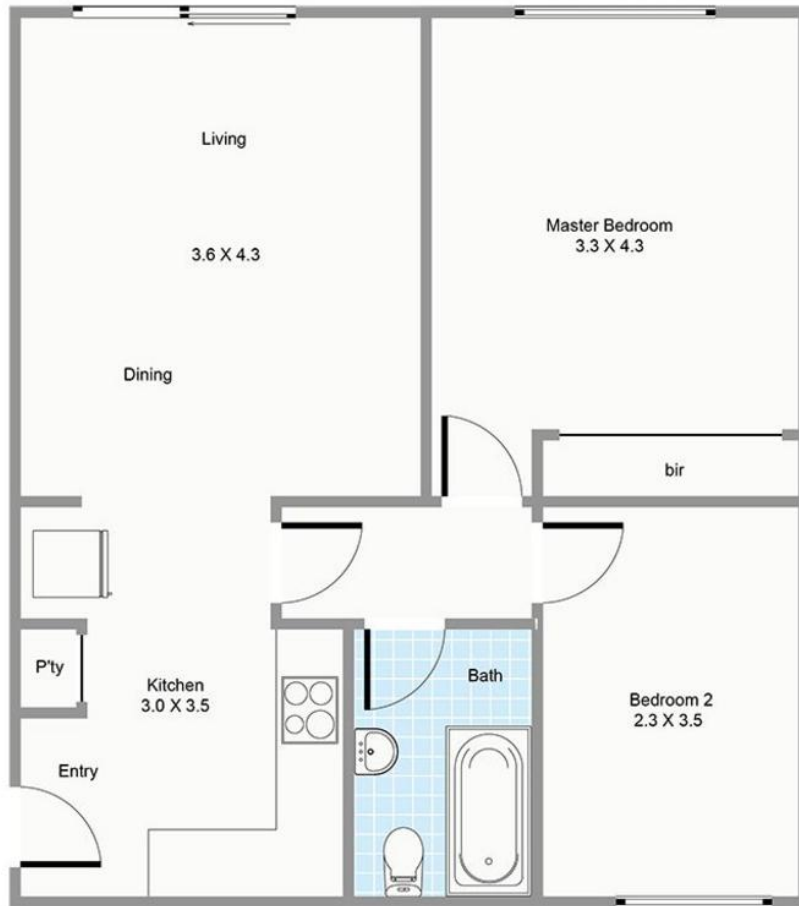
LJ Hooker City Residential (08) 9325 0700

Shop 30, 82 Royal Street, EAST PERTH WA 6004
cityresperth.ljhooker.com.au | hello@ljhpxp.com.au



Disclaimer: All information contained therein is gathered from relevant third parties sources. We cannot guarantee or give any warranty about the information provided. Interested parties must rely solely on their own enquiries.

LJ Hooker City Residential
(08) 9325 0700



Approximate Areas

Internal: 56m²

Carbay: 12m²

Total Area: 68m²

All measurements are estimates
All dimensions are in metres.
Plans are for demonstration only.
www.cribcreative.com.au



9/9 Jersey Street, Jolimont