



Johnston, 13/8 Camm Street

Quiet Johnston Townhouse

Situated within a small, quiet complex, this modern townhouse is ready to move right on in and be turned into a home. Neatly presented inside and out, the home feels instantly appealing as you walk directly into its open-plan living space. Off to one side, a stylish kitchen extends along one wall, flaunting sleek stone benchtops, modern appliances and plenty of storage. Large sliding glass doors let in the natural light and open out to a pleasant courtyard with verandah.

Two well-proportioned bedrooms are found on the upper level, each with mirrored built-in robes and a functional ensuite to the main. The main bathroom also features a large open shower on this level, and a separate laundry is tucked away back down on the lower level. Completing the property is a double covered carport at the front of the home, which can be accessed internally.

Features Include:



For Sale
Offers Over \$320,000

View
ljhooker.com.au/5CSPF2X

Contact
Jasmine Smith
0438 978 737
jsmith@ljhookerdarwin.com.au

LJ Hooker Darwin
(08) 8924 0900

Disclaimer: All information contained therein is gathered from relevant third parties sources. We cannot guarantee or give any warranty about the information provided. Interested parties must rely solely on their own enquiries.

- Small complex within quiet setting
- Lower level flaunts bright open-plan living
- Kitchen boasts stone benchtops and modern stainless steel appliances
- Discreet laundry neatly adjoins kitchen
- Sliding glass doors open out onto the neat courtyard
- Two generous bedrooms, each with built-in robe
- Modern ensuite and bathroom
- Double covered carport at front

Feeling light, bright and open, this two-bedroom townhouse offers modern, easy living within a fabulously low maintenance layout. The complex offers a pool perfect to cool off in this wet deason. Just five minutes' drive from Palmerston CBD a short walk to parks, transport and Mary MacKillop Catholic College, and less than 25 minutes to Darwin CBD.

Body corporate management: Altitude Management

Body corporate levies: \$4,200 p/a approx.

Council rates: \$1,950 per annum approx.

Property built: 2014 approx.

Area under Title: 182m2

More About this Property

Property ID	5CSPF2X
Property Type	Unit
Land Area	182 m ²
Including	Air Conditioning Built-in-Robes

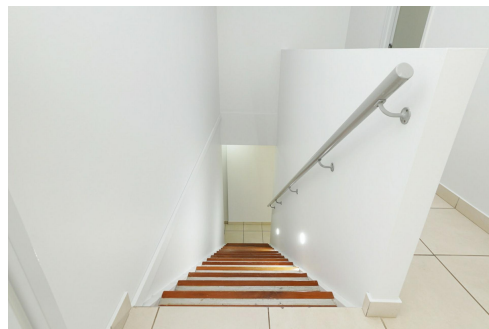
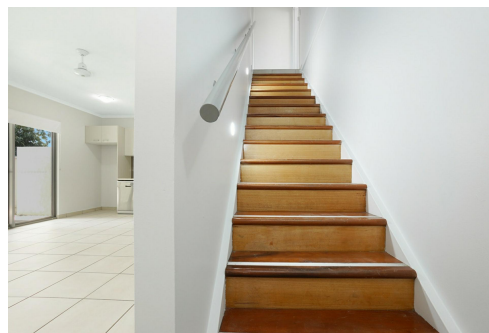
Jasmine Smith 0438 978 737

Property Investment Manager | jsmith@ljhookerdarwin.com.au

LJ Hooker Darwin (08) 8924 0900

Shop 1/25 Parap Road, PARAP NT 0820

darwin.ljhooker.com.au | reception@ljhookerdarwin.com.au

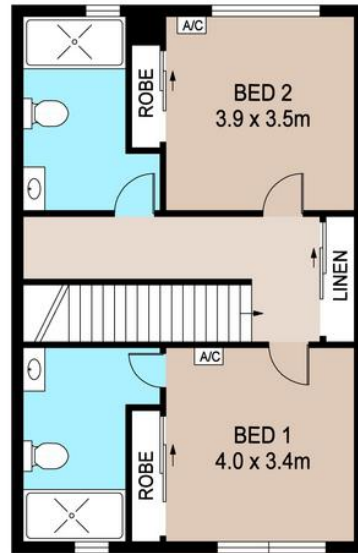


LJ Hooker Darwin
(08) 8924 0900

Disclaimer: All information contained therein is gathered from relevant third parties sources. We cannot guarantee or give any warranty about the information provided. Interested parties must rely solely on their own enquiries.



GROUND FLOOR



FIRST FLOOR

13/8 CAMM STREET, JOHNSTON

DISCLAIMER: PLANS SHOWN ARE FOR MARKETING PURPOSES ONLY. ALL DIMENSIONS ARE APPROXIMATE AND NOT TO SCALE. THEY ARE SUBJECT TO ERRORS AND INACCURACIES AND NO LIABILITY WILL BE ACCEPTED. INTERESTED PARTIES SHOULD MAKE THEIR OWN INQUIRIES.