



14 Bumberrah Road, Johnsonville

## THE ULTIMATE PACKAGE &ndash; A DREAM SHED, HUGE BLOCK & BY THE WATER

This exceptional lifestyle property gives you space, versatility, and an unbeatable location close to the water. Suited to tradies, those working from home, or anyone dreaming of the ultimate workshop setup, this impressive property delivers it all.

The shedding is truly a standout feature. A massive 22m x 9m workshop with almost 200sqm of floor area with an impressive 4.5m high clearance the shed is complete with engineered concrete floors designed to handle heavy vehicles, along with 3-phase power&mdash;ideal for serious machinery, business use, or large-scale projects. In addition, a large double garage provides extra storage, while the dedicated van port is perfect for housing your high-clearance caravan/motorhome or boat.

The brick home features four bedrooms, a spacious central bathroom, and the convenience of two toilets. Inside, high ceilings enhance the sense of space, while a huge second living zone or games room provides a great space for everyone to gather which steps outside via barn doors to a balcony spanning half of the home that invites you to relax and take in the peaceful private surroundings.

Outdoors, the property continues to impress with established fruit

4 1 14

**FOR SALE**

\$749,000

**VIEW**

By Appointment

**AGENTS**

Carly Hine

0418 307 288

chine@ljhookerbairnsdale.com.au

**AGENCY**

LJ Hooker Bairnsdale

(03) 5152 4172

All information contained therein is gathered from relevant third parties sources.  
We cannot guarantee or give any warranty about the information provided.  
Interested parties must rely solely on their own enquiries.

LJ Hooker

trees, hothouses, and ample space to embrace a self-sufficient lifestyle or further enhance the grounds with your own vision. With over 60,000 litres of water storage, the property is well-equipped to support sustainable living and keep everything thriving year-round. Positioned just two minutes drive from the beautiful Tambo River & Johnsonville boat ramp which allows easy access and the wider Gippsland Lakes, you'll enjoy boating, fishing, and a relaxed water lifestyle. Conveniently located between Bairnsdale and Lakes Entrance, and with the Black Stump store just a couple of minutes walk for everyday essentials, this property has a lot to offer. A rare property with endless possibilities—inspect today and experience the lifestyle for yourself.

## MORE DETAILS

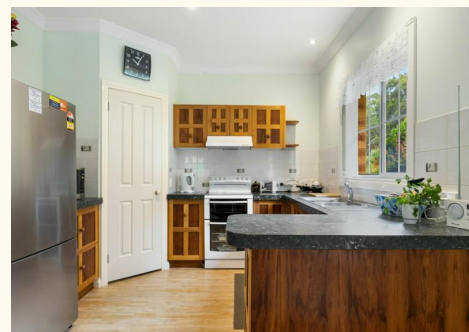
Property ID	18YEFBF
Property Type	House
Land Area	3349 m2
Including	Study
	Air Conditioning
	Ducted Cooling
	Toilets (2)
	Built-in-Robes
	Secure Parking
	Fully Fenced

**Carly Hine 0418 307 288**

Sales Consultant / Licensed Estate Agent |  
chine@ljhookerbairnsdale.com.au

**LJ Hooker Bairnsdale (03) 5152 4172**

195 Main Street, BAIRNSDALE VIC 3875  
bairnsdale.ljhooker.com.au | bairnsdale@ljhookerbairnsdale.com.au





All information contained therein is gathered from relevant third parties sources.  
 We cannot guarantee or give any warranty about the information provided.  
 Interested parties must rely solely on their own enquiries.