

Jericho, 470 Jericho Road

Jericho - The Old School House

Built in the mid-1800s, the Old School House in Jericho is a home brimming with history and charm, now ready for a new owner to love it as much as the current ones have.

Set on over 6,200m² of superbly established grounds, this beautiful property offers an easy one-hour commute to Hobart city. It maintains all the character of yesteryear while providing the modern conveniences you could ever need.

The house features a charming country-style kitchen with an adjacent family room and dining area, perfect for cosy meals and family gatherings. The formal lounge room, once the original School Room, is stunning with its cathedral ceilings and gorgeous light fittings. This home offers flexibility with its four or five bedrooms-your choice-and two well-appointed bathrooms.

Inside, (and out) you'll find wonderful sandstone features and plenty of storage options.



Disclaimer: All information contained therein is gathered from relevant third parties sources. We cannot guarantee or give any warranty about the information provided. Interested parties must rely solely on their own enquiries.

4

2

6

For Sale

Offers Over \$745,000

View

ljhooker.com.au/5W86FCS

Contact

Ant Manton

0408 621 856

antmanton@ljhookerpinnacle.com

LJ Hooker Pinnacle Property
(03) 6272 8177

Multiple heating choices ensure comfort throughout the seasons, and an endless supply of water means you'll never run out, even in the hottest summer or coldest winter.

Step outside to your very own garden paradise. The land is level, fully fenced, and offers a natural adventure playground for both big and little kids alike-there are even trees to climb! For sports enthusiasts, there's a tennis court ready for play.

In addition to these features, the property includes a huge garage and workshop, plus numerous storage sheds. There are many other gems that haven't even been mentioned yet, making this package almost complete.

All that's missing is you, and a call or message can sort that out!

More About this Property

Property ID	5W86FCS
Property Type	House
House Size	225 m²
Land Area	6298 m²
Including	Toilets (2)

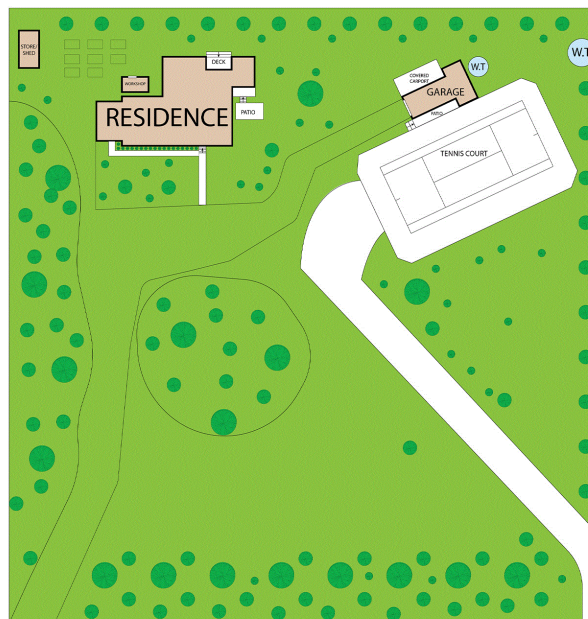
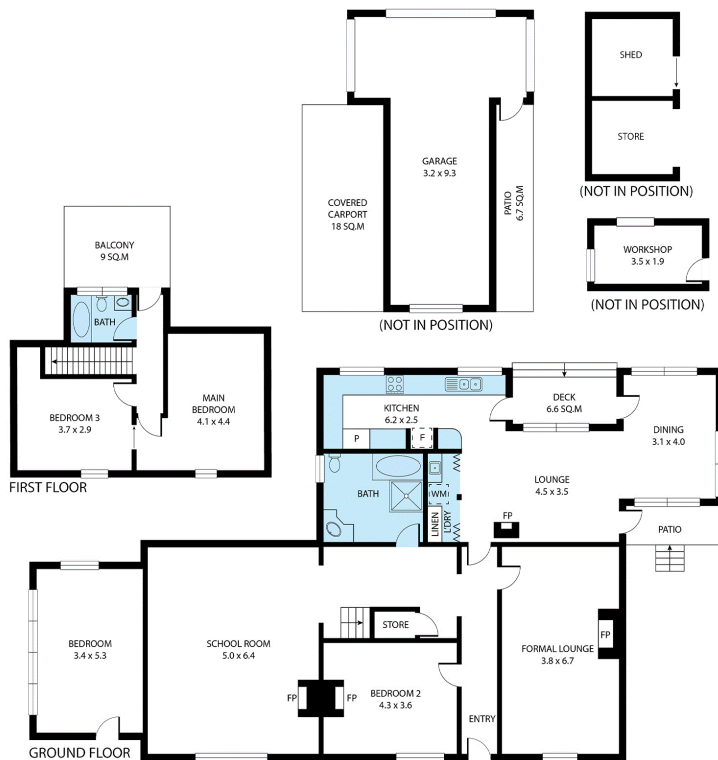
Ant Manton 0408 621 856
Real Estate Agent | antmanton@ljhookerpinnacle.com

LJ Hooker Pinnacle Property (03) 6272 8177
402 Main Road, GLENORCHY TAS 7010
pinnacleproperty.ljhooker.com.au | hello@ljhookerpinnacle.com



Disclaimer: All information contained therein is gathered from relevant third parties sources. We cannot guarantee or give any warranty about the information provided. Interested parties must rely solely on their own enquiries.

LJ Hooker Pinnacle Property
(03) 6272 8177



470 Jericho Road, Jericho

Total approx. floor area: 225m²

Areas and dimensions are approximate and therefore this floor plan should only be used for illustrative purposes.

Real Estate Marketing by nextcreative.com.au



LJ Hooker Pinnacle Property
(03) 6272 8177

Disclaimer: All information contained therein is gathered from relevant third parties sources. We cannot guarantee or give any warranty about the information provided. Interested parties must rely solely on their own enquiries.