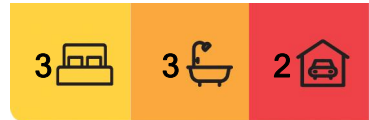


Inverell, 37 Brae Street

SOLD BY LJ HOOKER INVERELL



For Sale
\$799,000

View
ljhooker.com.au/PTPH8U

Contact
Sean Taylor
0409 666 854
staylor.inverell@ljhooker.com.au
Sean Taylor
0409 666 854
staylor.inverell@ljhooker.com.au

This character home is located in one of Inverell's most premier Street's and has been beautifully renovated.

- 3 bedrooms, two with ensuites
- Well appointed electric kitchen with dishwasher and great storage
- Two living area both with great natural light
- Ducted evaporative air conditioning, wood heater and gas points
- Approx. 5.2KW of solar
- Inviting covered deck off family room
- New large double garage with auto door off back street
- 2nd original single garage/shed
- Dual Street access, established, well landscaped grounds
- Located approx. 900m to Inverell CBD, approx. 700m to Ross Hill Public School & approx. 450m to Inverell High School



LJ Hooker Inverell
(02) 6721 0215

Disclaimer: All information contained therein is gathered from relevant third parties sources. We cannot guarantee or give any warranty about the information provided. Interested parties must rely solely on their own enquiries.

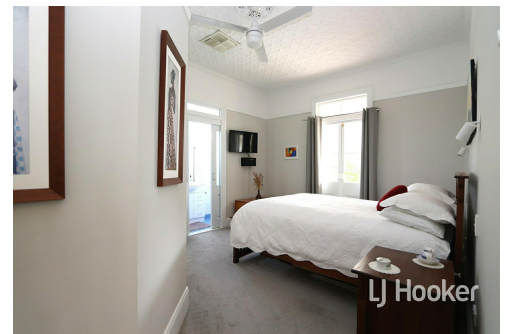
Disclaimer: All information contained is gathered from relevant third party sources. We cannot guarantee or give any warranty about the information provided. Interested parties must rely solely on their own enquiries.

More About this Property

Property ID	PTPH8U
Property Type	House
Land Area	1246 m2

Sean Taylor 0409 666 854
Residential & Commercial Sales | staylor.inverell@ljhooker.com.au
Sean Taylor 0409 666 854
Residential & Commercial Sales | staylor.inverell@ljhooker.com.au

LJ Hooker Inverell (02) 6721 0215
30-32 Otho Street, INVERELL NSW 2360
inverell.ljhooker.com.au | inverell@ljhooker.com.au



Disclaimer: All information contained therein is gathered from relevant third parties sources. We cannot guarantee or give any warranty about the information provided. Interested parties must rely solely on their own enquiries.

LJ Hooker Inverell
(02) 6721 0215

