



## Inverell, 25-27 Gordon Street

SOLD BY LJ HOOKER INVERELL

Located in a sought-after street on Ross Hill. This home has been lovingly owned by the one local family since originally built in approx. 1951. Your opportunity to purchase a stunning family home with views, space and style.

- 3 bedrooms with built-in robes
- Main bedroom with reverse cycle air conditioner & ensuite bathroom
- Kitchen has new electric oven, dishwasher & adjoining breakfast room
- Formal lounge room with gas log heater, built-in book shelves & direct access to verandah
- Formal dining space + sunroom with R/C A/C & gas heating
- Bathroom with spa bath, shower & toilet
- Large covered & paved back entertaining area overlooking the backyard
- Front concrete deck with stunning views overlooking Inverell
- Single lock-up garage with auto access + workshop, carport, concrete driveway and



**Disclaimer:** All information contained therein is gathered from relevant third parties sources. We cannot guarantee or give any warranty about the information provided. Interested parties must rely solely on their own enquiries.



**For Sale**  
\$490,000

**View**  
[ljhooker.com.au/PDYH8U](http://ljhooker.com.au/PDYH8U)

**Contact**  
**Miles Devlin**  
0488 999 365  
[mdevlin.inverell@ljhooker.com.au](mailto:mdevlin.inverell@ljhooker.com.au)  
**Miles Devlin**  
0488 999 365  
[mdevlin.inverell@ljhooker.com.au](mailto:mdevlin.inverell@ljhooker.com.au)

**LJ Hooker Inverell**  
**(02) 6721 0215**

garden shed

- Approx. 1,344sqm, well fenced block with established gardens
- This property is being sold subject to finalisation of probate

Other features include: Home security system, insulation in the ceiling, gas hot water system, update electrical and plumbing

Contact Miles Devlin on 0488 999 365 to arrange a viewing of 25-27 Gordon Street Inverell.

Disclaimer: All information contained is gathered from relevant third party sources. We cannot guarantee or give any warranty about the information provided. Interested parties must rely solely on their own enquiries.

## More About this Property

<b>Property ID</b>	PDYH8U
<b>Property Type</b>	House
<b>Land Area</b>	1344 m2
<b>Including</b>	Ensuite Air Conditioning Toilets (2) Built-in-Robes City Views Close to Schools Heating Kitchenette Prestige Homes Security System

**Miles Devlin 0488 999 365**

Director | [mdevlin.inverell@ljhooker.com.au](mailto:mdevlin.inverell@ljhooker.com.au)

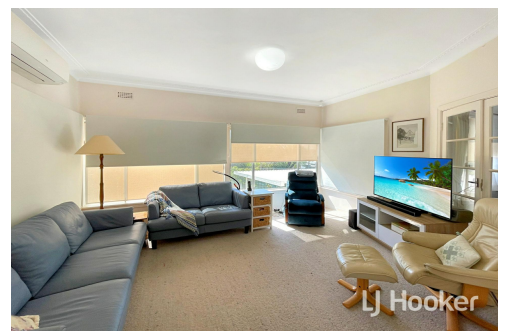
**Miles Devlin 0488 999 365**

Director | [mdevlin.inverell@ljhooker.com.au](mailto:mdevlin.inverell@ljhooker.com.au)

**LJ Hooker Inverell (02) 6721 0215**

30-32 Otho Street, INVERELL NSW 2360

[inverell.ljhooker.com.au](http://inverell.ljhooker.com.au) | [inverell@ljhooker.com.au](mailto:inverell@ljhooker.com.au)



**LJ Hooker Inverell**  
**(02) 6721 0215**

**Disclaimer:** All information contained therein is gathered from relevant third parties sources. We cannot guarantee or give any warranty about the information provided. Interested parties must rely solely on their own enquiries.