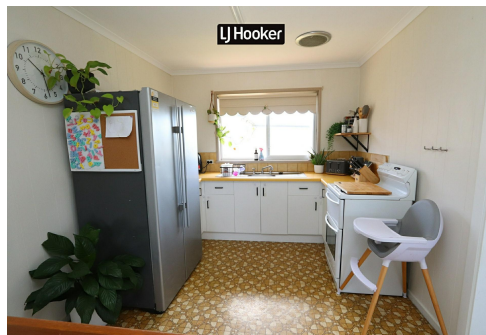
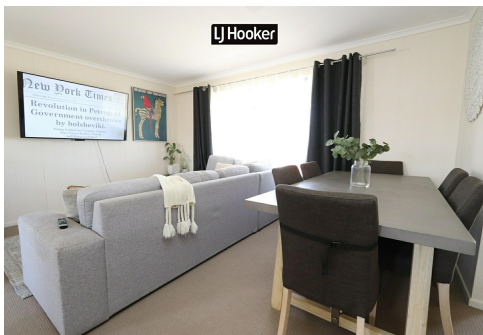


LJ Hooker

SOLD



Inverell, 14 Cameron Street

SOLD BY LJ HOOKER INVERELL

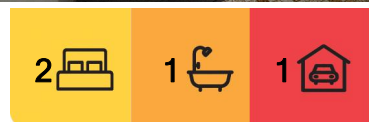
This very tidy property offers good value buying in Inverell

- Brick veneer flat level home
- Ideal for the investor or home buyer on a budget
- 2 bedrooms both with built in robes, possible 3rd bedroom option
- Open plan living area + separate lounge
- Tidy kitchen with ample cupboards and electric stove
- Gas heating plus reverse cycle air con
- Covered outdoor area, workshop with attached carport
- Currently tenanted at \$350 per week
- Located approx. 1.5Km to Inverell CBD. Diagonally opposite the recently refurbished Cameron Park.

Disclaimer: All information contained is gathered from relevant third party sources. We



Disclaimer: All information contained therein is gathered from relevant third parties sources. We cannot guarantee or give any warranty about the information provided. Interested parties must rely solely on their own enquiries.



For Sale
REDUCED \$325,000

View
ljhooker.com.au/P60H8U

Contact
Miles Devlin
0488 999 365
mdevlin.inverell@ljhooker.com.au
Miles Devlin
0488 999 365
mdevlin.inverell@ljhooker.com.au

LJ Hooker Inverell
(02) 6721 0215

cannot guarantee or give any warranty about the information provided. Interested parties must rely solely on their own enquiries.

More About this Property

Property ID	P60H8U
Property Type	House
Land Area	657 m²
Including	Air Conditioning Built-in-Robes Heating Kitchenette Toilet Facilities Window Treatments

Miles Devlin 0488 999 365
Director | mdevlin.inverell@ljhooker.com.au
Miles Devlin 0488 999 365
Director | mdevlin.inverell@ljhooker.com.au

LJ Hooker Inverell (02) 6721 0215
30-32 Otho Street, INVERELL NSW 2360
inverell.ljhooker.com.au | inverell@ljhooker.com.au



Disclaimer: All information contained therein is gathered from relevant third parties sources. We cannot guarantee or give any warranty about the information provided. Interested parties must rely solely on their own enquiries.

LJ Hooker Inverell
(02) 6721 0215