



9 Wood Street, Inverell

## SOLD BY LJ HOOKER INVERELL

Units 1 & 2, 9 Wood Street, Inverell NSW 2630

Unit complex set on approx. 613m2 block, located approx. 350m to the Inverell CBD. This complex has 2 single level weatherboard units and shows a consistent rental income.

Each unit consists of:

- 1 good-sized bedroom
- Kitchen with electric freestanding oven
- Cosy lounge room
- Combined laundry/bathroom
- Shared fenced yard

Unit 1 is currently leased for \$200.00 per week until April 2026  
Unit 2 is currently leased for \$200.00 per week until April 2026

Contact Miles at LJ HOOKER INVERELL on 0488999365 to arrange a viewing.

**Disclaimer:** All information contained is gathered from relevant third party sources. We cannot guarantee or give any warranty about the information provided. Interested parties must rely solely on their own

All information contained therein is gathered from relevant third parties sources. We cannot guarantee or give any warranty about the information provided. Interested parties must rely solely on their own enquiries.

2 2 0

**FOR SALE**  
\$309,000

### AGENTS

Miles Devlin  
0488 999 365  
mdevlin.inverell@ljhooker.com.au

Miles Devlin  
0488 999 365  
mdevlin.inverell@ljhooker.com.au

### AGENCY

LJ Hooker Inverell  
(02) 6721 0215

LJ Hooker

enquiries.

## MORE DETAILS

Property ID Q3TH8U  
Property Type BlockOfUnits  
Land Area 613 m2  
Including Toilets (2)

**Miles Devlin 0488 999 365**

Director | [mdevlin.inverell@ljhooker.com.au](mailto:mdevlin.inverell@ljhooker.com.au)

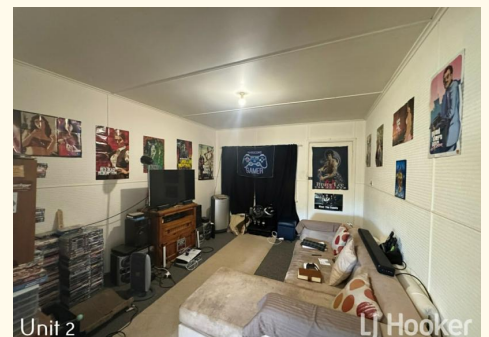
**Miles Devlin 0488 999 365**

Director | [mdevlin.inverell@ljhooker.com.au](mailto:mdevlin.inverell@ljhooker.com.au)

**LJ Hooker Inverell (02) 6721 0215**

30-32 Otho Street, INVERELL NSW 2360

[inverell.ljhooker.com.au](http://inverell.ljhooker.com.au) | [inverell@ljhooker.com.au](mailto:inverell@ljhooker.com.au)



All information contained therein is gathered from relevant third parties sources.  
We cannot guarantee or give any warranty about the information provided.  
Interested parties must rely solely on their own enquiries.