



Inverell, 9 Corella Court

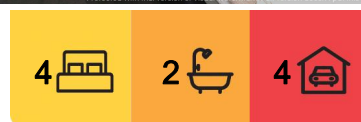
SOLD BY LJ HOOKER INVERELL

Welcome to 9 Corella Court, a beautifully presented family home set on a generous 1 hectare in an established cul-de-sac. This property offers the perfect blend of comfort and space for the modern family.

- 4 spacious bedrooms with built-in wardrobes
- Main bedroom includes a walk-in robe, R/C A/C, & ensuite with shower & toilet
- All other bedrooms feature ceiling fans for added comfort
- Open plan kitchen, lounge, and dining area with reverse cycle air conditioning
- Kitchen equipped with a walk-in pantry, dishwasher, & free-standing oven
- Carpeted media room with ceiling fan for cozy movie nights
- Main bathroom includes a shower, bath, & separate toilet
- Internal laundry with linen cupboard & direct access to the backyard
- Hallway with an additional walk-in linen cupboard for storage
- Covered outdoor entertaining deck, perfect for gatherings



Disclaimer: All information contained therein is gathered from relevant third parties sources. We cannot guarantee or give any warranty about the information provided. Interested parties must rely solely on their own enquiries.



For Sale
\$789,000

View
ljohnhooker.com.au/PHYH8U

Contact
John Devlin
0488 999 364
jcdevlin.inverell@ljohnhooker.com.au
John Devlin
0488 999 364
jcdevlin.inverell@ljohnhooker.com.au

LJ Hooker Inverell
(02) 6721 0215

- Attached 2-car garage with internal access for convenience
- Approx. 10m x 10.5m colorbond shed with concrete floor for extra storage or workshop space
- Well fenced with dog run, house yard & paddock

This property is ideal for families seeking space and tranquility while still being close to local amenities.

Contact us today to arrange a viewing of 9 Corella Court and discover your next family home!

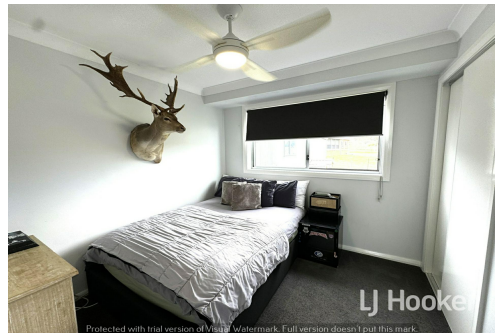
Disclaimer: All information contained is gathered from relevant third party sources. We cannot guarantee or give any warranty about the information provided. Interested parties must rely solely on their own enquiries.

More About this Property

Property ID	PHYH8U
Property Type	AcreageSemi-rural
Land Area	1.02 hectare
Including	Ensuite Air Conditioning Toilets (2) Built-in-Robes Carpeted Heating

John Devlin 0488 999 364
 Licensee | jcdevlin.inverell@ljhooker.com.au
John Devlin 0488 999 364
 Licensee | jcdevlin.inverell@ljhooker.com.au

LJ Hooker Inverell (02) 6721 0215
 30-32 Otho Street, INVERELL NSW 2360
inverell.ljhooker.com.au | inverell@ljhooker.com.au



Disclaimer: All information contained therein is gathered from relevant third parties sources. We cannot guarantee or give any warranty about the information provided. Interested parties must rely solely on their own enquiries.

LJ Hooker Inverell
(02) 6721 0215