

Ingleburn, 28A Gordon Avenue

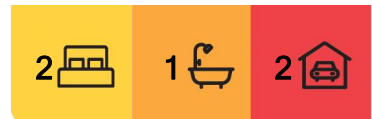
Cosy 2 bedroom home

Welcome to this 2-bedroom home, perfectly positioned in one of Ingleburn's most sought-after streets! Ideal for families, investors, and first-time buyers, 28A Gordon Avenue offers convenience, just minutes from local amenities, schools, and transport links.

Key Features:

- Spacious 2 generous-sized bedrooms, master with built-in robe
- Bright & airy living and dining areas
- Functional kitchen with ample storage
- Air conditioning for year-round comfort
- Low-maintenance backyard, perfect for outdoor entertaining
- Covered carport
- Quiet, family-friendly street with plenty of on-street parking

Location Highlights:



For Sale

CONTACT AGENT _____

View

ljhooker.com.au/CDBHUC

Contact

Joanne Huynh

0478 932 653

joanne.huynh@ljhooker.com.au

Khanh Dang

0412 598 999

khanh.dang@ljhooker.com.au



Disclaimer: All information contained therein is gathered from relevant third parties sources.

We cannot guarantee or give any warranty about the information provided. Interested parties must rely solely on their own enquiries.

LJ Hooker Edensor Park | Green Valley
(02) 9823 8888

5-minute drive to Ingleburn Station and shopping centre

Close to reputable schools, parks, and recreational facilities

Easy access to the M5 and major transport routes

Whether you're looking for a new place to call home or a smart investment opportunity, this property is a must-see!

☎ Contact us today to arrange your private inspection!

More About this Property

Property ID	CDBHUC
Property Type	House
Land Area	410 m2
Including	Toilets (1)

Joanne Huynh 0478 932 653

Senior Sales Executive | joanne.huynh@ljhooker.com.au

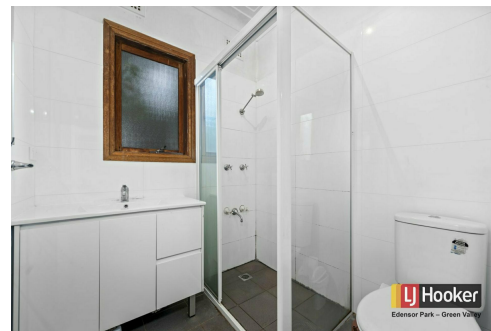
Khanh Dang 0412 598 999

Senior Sales Executive | khanh.dang@ljhooker.com.au

LJ Hooker Edensor Park | Green Valley (02) 9823 8888

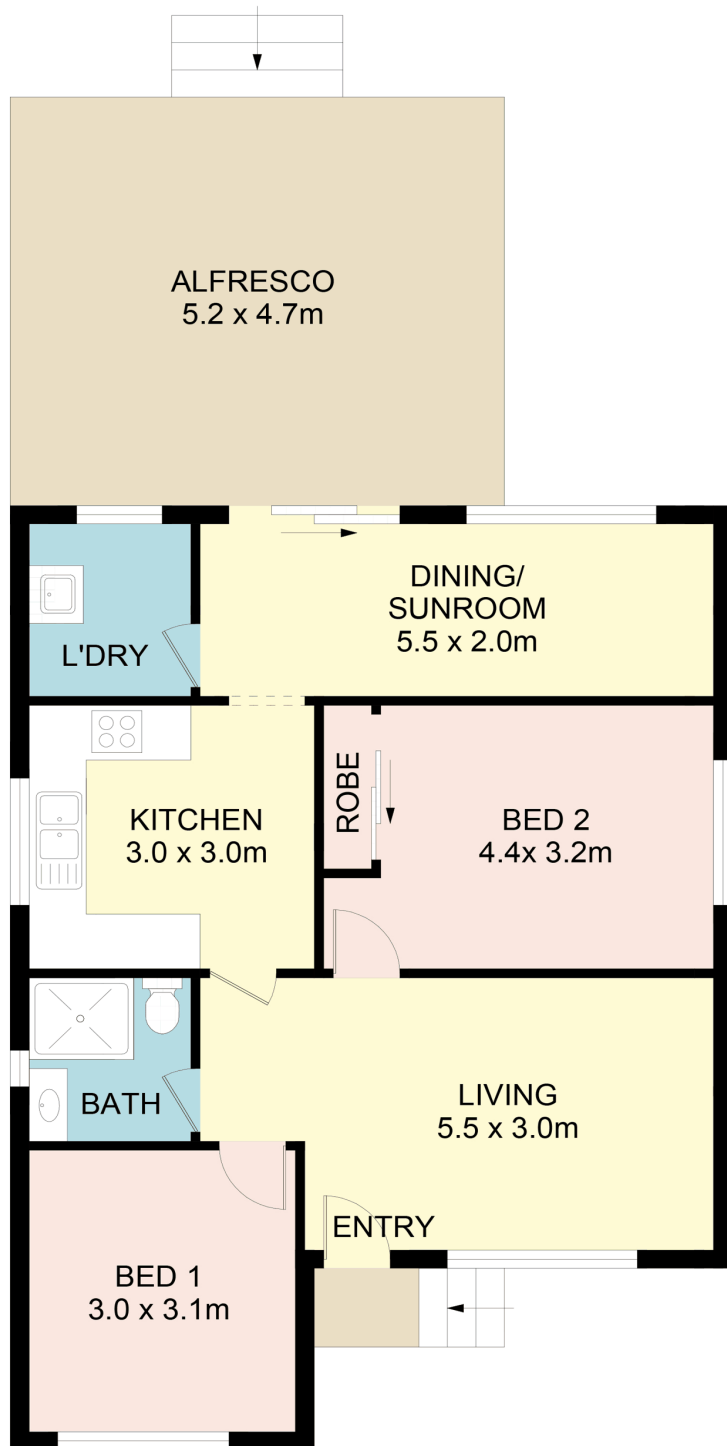
Shop 8, 207-215 Edensor Road, Edensor Park Plaza, EDENSOR PARK NSW 2176

edensorpark.ljhooker.com.au | edensorpark@ljhooker.com.au



Disclaimer: All information contained therein is gathered from relevant third parties sources. We cannot guarantee or give any warranty about the information provided. Interested parties must rely solely on their own enquiries.

**LJ Hooker Edensor Park | Green Valley
(02) 9823 8888**



SITE PLAN
(NOT TO SCALE)

28A Gordon Avenue, Ingleburn



LJ Hooker
Edensor Park

DISCLAIMER: No liability for the accuracy of details contained within our floor plans. All plans are drawn and also checked to the best of our ability, however information contained in our floor plans such as area calculations are approximate, and have not been surveyed or drawn to scale. Our floor plans are for representational purposes only and should be used as such. Do not attempt to refer to our floor plans for structural or detailed information.

LJ Hooker

Disclaimer: All information contained therein is gathered from relevant third parties sources. We cannot guarantee or give any warranty about the information provided. Interested parties must rely solely on their own enquiries.

LJ Hooker Edensor Park | Green Valley
(02) 9823 8888