

Ingle Farm, 9 Onkara Avenue

Exceptional Corner Allotment with Unlimited Potential

Auction: Saturday, 29th March at 1:00pm

An exciting opportunity presents itself with this prime corner allotment of approximately 630sqm, perfectly positioned in the highly sought-after suburb of Ingle Farm. With no registered easements, this versatile property offers endless possibilities - renovate, rebuild, or explore multi-dwelling redevelopment (STPC). Whether you're a savvy investor, developer, or homebuyer, this is your chance to capitalise on a premium location with outstanding potential.

Built in 1966, the existing home features three well-sized bedrooms, a spacious living area, and a central kitchen with gas cooking and ample storage, offering plenty of scope for modern updates. A large shed with gated side access adds further appeal, providing valuable storage or an ideal workspace.



For Sale
\$670,000

View
ljhooker.com.au/2BGHGJU

Contact
Carla Doecke
0456 830 122
carlad@ljhsales.com.au

Ashley Palazzo
0414 347 884
ashleyp@ljhsales.com.au



Disclaimer: All information contained therein is gathered from relevant third parties sources. We cannot guarantee or give any warranty about the information provided. Interested parties must rely solely on their own enquiries.

**LJ Hooker Greenwith | Golden Grove
| Mawson Lakes | Modbury
(08) 8289 6660**

Key Features:

- * Three bedrooms, with built-in robes in the master and second bedroom
- * Generous 630sqm (approx.) corner allotment with dual street access
- * Flat, easement-free block - ideal for future development (STPC)
- * Central kitchen featuring gas cooking and ample cabinetry
- * Ducted evaporative air-conditioning
- * Dual access, perfect for additional car parking, caravans, or trailers
- * Large shed - ideal for hobbyists, tradespeople, or extra storage
- * Low-maintenance grounds, offering flexibility for future landscaping

Positioned in a thriving community, this property is conveniently close to quality schools, shopping centres, parks, and public transport, ensuring an enviable lifestyle or a high-return investment.

Don't miss this exceptional opportunity-whether you're looking to create your dream home or develop for the future, this property is brimming with potential!

Contact Carla Doecke on 0456 830 122 today!

All information provided has been obtained from sources we believe to be accurate, however, we cannot guarantee the information is accurate and we accept no liability for any errors or omissions (including but not limited to a property's land size, floor plans and size, building age and condition). Interested parties should make their own enquiries and obtain their own legal and financial advice. Should this property be scheduled for auction, the Vendor's Statement may be inspected at either of our two LJ Hooker Property Specialists Real Estate offices for 3 consecutive business days immediately preceding the auction and at the auction for 30 minutes before it starts.

RLA 208516

More About this Property

Property ID	2BGHGJU
Property Type	House
House Size	98 m2
Land Area	630 m2
Including	Outdoor Entertaining

Carla Doecke 0456 830 122

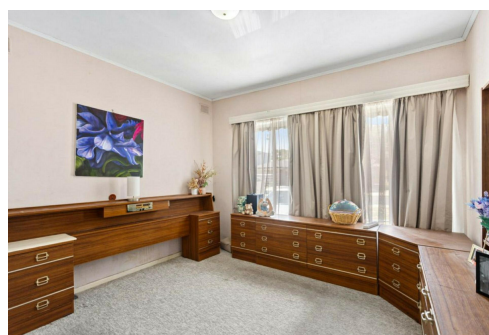
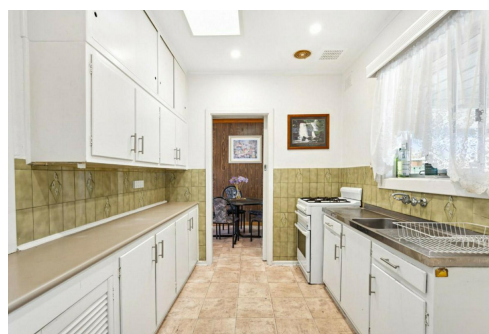
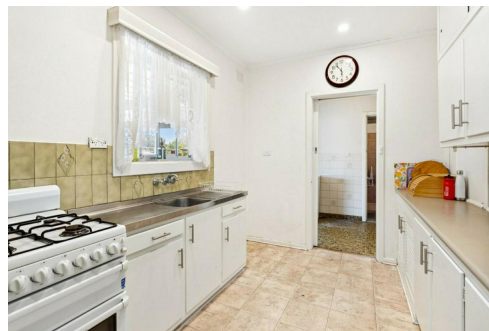
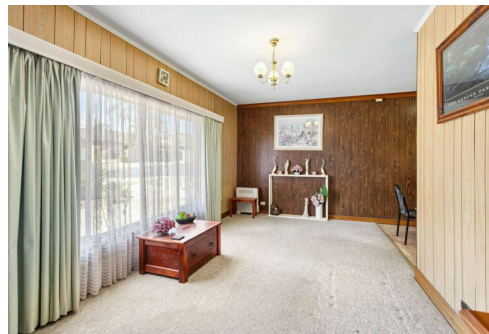
Sales Specialist | carlad@ljhsales.com.au

Ashley Palazzo 0414 347 884

Sales Specialist | ashleyp@ljhsales.com.au

LJ Hooker Greenwith | Golden Grove | Mawson Lakes | Modbury (08) 8289 6660

North East, Shop 2, 1007 North East Road, RIDGEHAVEN SA 5097
greenwithgoldengrove.ljhooker.com.au | info@ljhsupport.com.au



Disclaimer: All information contained therein is gathered from relevant third parties sources. We cannot guarantee or give any warranty about the information provided. Interested parties must rely solely on their own enquiries.

**LJ Hooker Greenwith | Golden Grove
| Mawson Lakes | Modbury
(08) 8289 6660**



Scale in metres. This drawing is for illustration purposes only. All measurements are approximate and details intended to be relied upon should be independently verified.

Produced by The Fotobase Group