

Ingle Farm, 2 Mandy Court

Charming Character Home!

Auction Location: Onsite

A unique home inside and out is just waiting for the next lucky owner. A perfect fit for anyone looking to enter into the market with a first home, an easy low maintenance property to downsize into or another great addition to any astute investor's portfolio. A home that allows the new occupant to move right in and soak up the charming character or put your own ideas to make it your own.

Features to love:

- * All three bedrooms are equipped with a built-in robes and ceiling fans
- * Bedroom three has an added retreat that can be converted into a flexible fourth bedroom
- * Large front living area as well as the extended rear living room for family enjoyment
- * Fantastic central kitchen with ample storage space, gas cooktop, dishwasher and Alby

Turner American Oak Cabinetry

3 1 1

For Sale

\$649,000 - \$679,000

View

ljhooker.com.au/2AWNGJU

Contact

Ashley Palazzo

0414 347 884

ashleyp@ljhsales.com.au



Disclaimer: All information contained therein is gathered from relevant third parties sources.

We cannot guarantee or give any warranty about the information provided. Interested parties must rely solely on their own enquiries.

**LJ Hooker Greenwith | Golden Grove
| Mawson Lakes | Modbury
(08) 8289 6660**

- * Expansive high quality bathroom with sizeable shower and corner spa bath
- * Outdoor entertainment space and verandah looking out into the fully fenced backyard perfect for family pets and kids to play
- * Low maintenance front yard with privacy screening behind trees
- * Automatic roller door access for secure vehicle storage

Another fantastic offering in the ever-popular Ingle Farm area. Parks nearby, great public and private schools from R-12, convenient shopping centres nearby with Major Shopping at Tea Tree Plaza within a 15-minute car ride as well as the Adelaide CBD not any further.

All information provided has been obtained from sources we believe to be accurate, however, we cannot guarantee the information is accurate and we accept no liability for any errors or omissions (including but not limited to a property's land size, floor plans and size, building age and condition). Interested parties should make their own enquiries and obtain their own legal and financial advice. Should this property be scheduled for auction, the Vendor's Statement may be inspected at either of our two LJ Hooker Property Specialists Real Estate offices for 3 consecutive business days immediately preceding the auction and at the auction for 30 minutes before it starts.

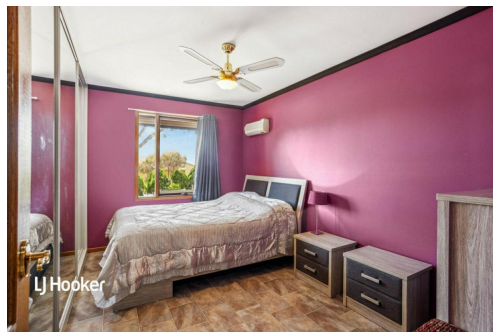
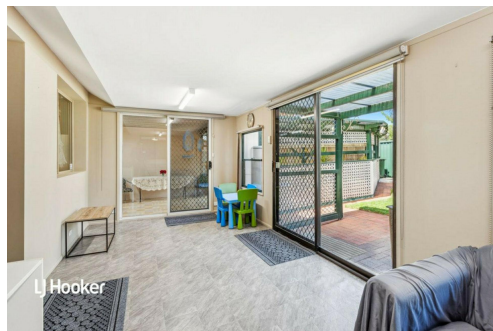
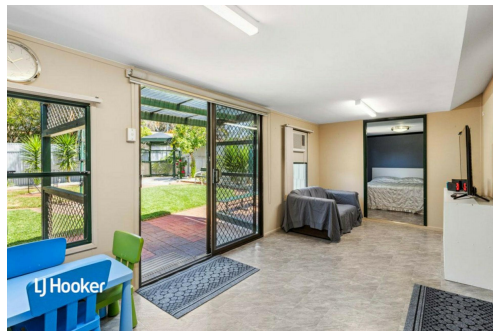
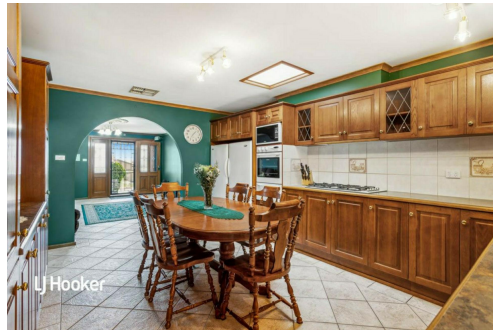
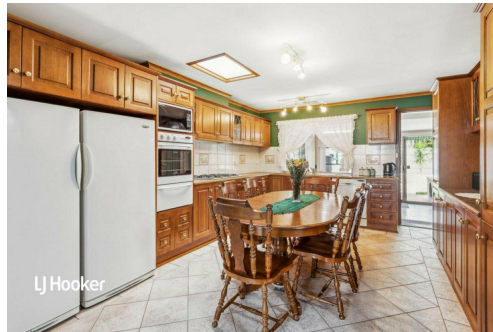
RLA 208516

More About this Property

Property ID	2AWNGJU
Property Type	House
House Size	111 m²
Land Area	519 m²
Including	Air Conditioning Ducted Cooling Dishwasher Built-in-Robes Secure Parking Fully Fenced

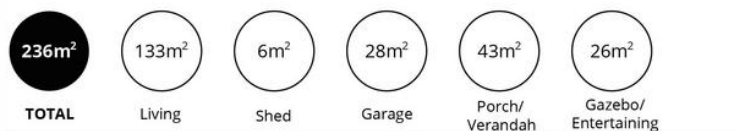
Ashley Palazzo 0414 347 884
Sales Specialist | ashleyp@ljhsales.com.au

LJ Hooker Greenwith | Golden Grove | Mawson Lakes | Modbury (08) 8289 6660
North East, Shop 2, 1007 North East Road, RIDGEHAVEN SA 5097
greenwithgoldengrove.ljhooker.com.au | info@ljhsupport.com.au



Disclaimer: All information contained therein is gathered from relevant third parties sources. We cannot guarantee or give any warranty about the information provided. Interested parties must rely solely on their own enquiries.

**LJ Hooker Greenwith | Golden Grove
| Mawson Lakes | Modbury
(08) 8289 6660**



Scale in metres. This drawing is for illustration purposes only. All measurements are approximate and details intended to be relied upon should be independently verified. Produced by The Fotobase Group