



Inchbonnie, 1425 Lake Brunner Road

DISCOVER SERENITY & SPLENDOR

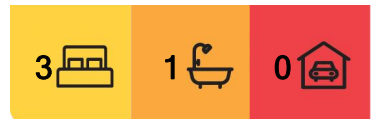
Welcome to 1425 Lake Brunner Road, a captivating haven nestled in the heart of Rotomanu, where tranquillity and mountain views blend seamlessly. This property isn't just a home; it's a gateway to an aspirational lifestyle, surrounded by New Zealand's breathtaking landscapes.

Sprawling across a generous 8000m², divided into two titles, this haven offers not only spacious living with 2-3 bedrooms but also a treasure trove of facilities. Imagine a practical carport, a vast 2 Bay shed, a single bay shed, and a workshop - perfect for all your storage, hobbies, and creative pursuits. The extensive land, over 4000m² per title, is a blank canvas for gardening, leisure activities, or even exploring the potential of building or renovating to enhance your investment.

Strategically positioned, this property offers the best of both worlds - serenity and convenience. A bus stop right at your gate ensures easy access to the surrounding areas.



Disclaimer: All information contained therein is gathered from relevant third parties sources. We cannot guarantee or give any warranty about the information provided. Interested parties must rely solely on their own enquiries.



For Sale
Offers Over \$399,000

View
ljhooker.co.nz/AMHYK

Contact
Manu Otene
022 308 6885
manuo@ljhashburton.co.nz

LJ Hooker Ashburton
0800 554 274
Robertson Real Estate Limited

Step outside to the picturesque Ivy Bay and Lake Brunner, and immerse yourself in some of New Zealand's most stunning vistas, all from the comfort of your front door.

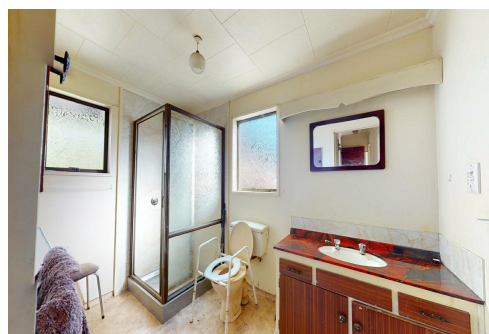
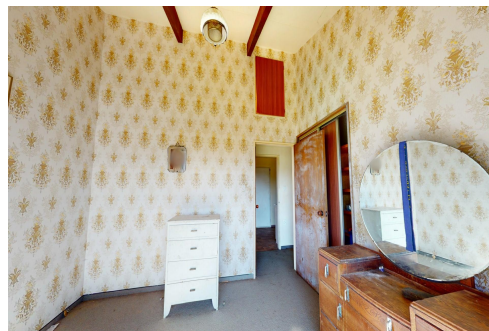
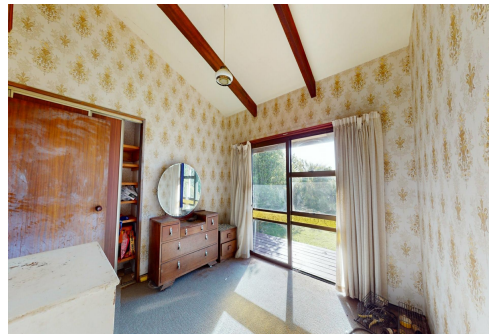
Families will find this location ideal, with the reputable Lake Brunner School nearby, offering quality education right in your neighbourhood.

This property is an idyllic retreat for families, couples, singles, retirees, investors, or anyone seeking to bank on a slice of paradise.

Don't miss this opportunity to own a piece of Rotomanu's serene beauty. Contact SuperManu at 022 308 6885 today, and take the first step towards your dream lifestyle.

Offers Over \$399,000

Contact Manu Otene 022 308 6885



More About this Property

Property ID	AMHYK
Property Type	House
House Size	94 m ²
Land Area	8078 m ²
Licensed Real Estate Agents (REAA2008)	

Manu Otene 022 308 6885
Property Consultant | manuo@ljhashburton.co.nz

LJ Hooker Ashburton 0800 554 274
Robertson Real Estate Limited
65 Tancred Street, ASHBURTON NZ
ashburton.ljhooker.co.nz | info@ljhashburton.co.nz



Disclaimer: All information contained therein is gathered from relevant third parties sources. We cannot guarantee or give any warranty about the information provided. Interested parties must rely solely on their own enquiries.

LJ Hooker Ashburton
0800 554 274
Robertson Real Estate Limited